

## **i-80 Completes PEA for Granite Creek, Nevada US\$244.9 M NPV (5%) & 34.2% After-Tax IRR**

*All currencies expressed as United States dollars unless otherwise stated*

Reno, Nevada, November 9, 2021 – **i-80 GOLD CORP. (TSX:IAU) (OTCQX:IAUCF) (“i-80”, or the “Company”)** is very pleased to announce the results of a Preliminary Economic Assessment (“PEA”) for the Company’s Granite Creek Project located in Humboldt County, Nevada. The technical report has also been filed with Canadian Securities regulators and can be found at [www.i80gold.com](http://www.i80gold.com) and under the Company’s profile at [www.sedar.com](http://www.sedar.com).

Highlights of the Granite Creek PEA (Base Case @ US\$1,650/oz Au) include:

- **After-Tax NPV@5% of US\$244.9 Million**
- **After-Tax IRR of 34.2%**
- **Initial Capital of US\$69.9 Million**
- **All-in Sustaining Cost (per oz Au produced) of US\$963.40**
- **Life of Mine Gold Production of 1,245,900 ounces**

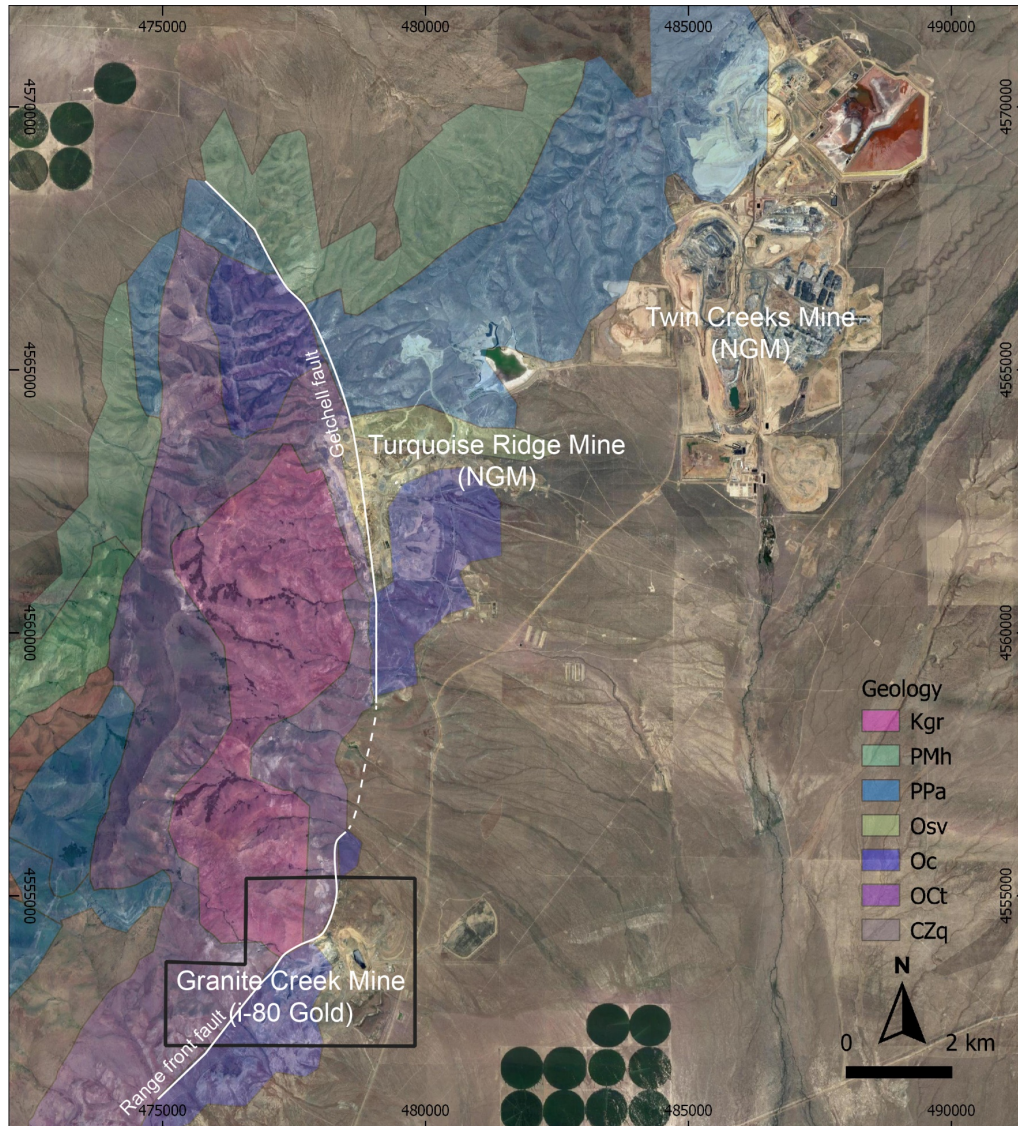
“The Granite Creek PEA confirms the substantial economic opportunity that can be realized through the development of both open pit and underground mines on the Property”, stated Matthew Gili, President and Chief Operating Officer of i-80. “This study contemplates constructing heap leach and CIL facilities on the property for the open pit and trucking refractory material for third party processing. The recent acquisition of the Lone Tree site will allow for the optimization of these facilities as we progress to a Feasibility Study, potentially leading to changes in the ultimate processing plans versus what is presented in the study”.

Granite Creek is one of four projects being advanced within i-80’s portfolio and the Company has made significant progress advancing the project since it was acquired in April of 2021. A major surface and underground drill program (~20,000 metres) is underway and the Company is completing additional underground development and commencing test mining in advance of making a production decision for the underground mine.

### **Granite Creek Preliminary Economic Assessment**

Global Resource Engineering Ltd. (GRE) was retained by i-80 Gold Corp. (i-80) to complete Preliminary Economic Assessment (PEA) Technical Report on the Granite Creek Mine Project (“Granite Creek Mine” or “the Property” or “the Project”). Granite Creek is located within the Getchell Trend immediately south of the Turquoise Ridge and Twin Creeks mining operations of Nevada Gold Mines (see Figure 1).

**Figure 1 – Granite Creek Property Location**



The project economics shown in the PEA are favorable, providing positive NPV values at varying gold prices, capital costs, and operating costs. For the open pit at Granite Creek, the study envisions the construction of a heap leach facility and a CIL plant on-site. For the fully permitted underground operation, trucking of mined material is assumed to be processed at an off-site, third-party processing facility. Future economic work will consider processing at the Lone Tree facility that was recently acquired from Nevada Gold Mines and located 43 miles (by road) to the south.

Based on the current resource estimates for the Property, the study envisions a mine-life of nine years, producing 1,245,900 ounces of gold with life-of-mine all-in sustaining costs of US\$963.40 per ounce of gold. This generates NPV@5% of US\$244.9 million and After-Tax IRR of 34.2%.

1. Mineral resources are not mineral reserves and do not have demonstrated economic viability. See Global mineral resources table at the end of this press release for global mineral resource estimates and qualifiers.

## Mineral Resource Estimate

Updated mineral resource estimates were completed on the property for the purposes of this PEA incorporating the current drill hole database, previously mined out volumes, and backfilled volumes. Table 1 shows the pit-constrained open pit Mineral Resource at a gold grade cutoff of 0.35 grams/tonne (gpt), and Table 2 shows the underground Mineral Resource at a gold grade cutoff of 5.0 gpt. The ongoing drill program is targeting the continued expansion of resources at Granite Creek.

**Table 1 – Granite Creek Mine Project Open Pit Mineral Resource**

Class	Zone	Total Process Material (1000s Tonnes)	Total Contained Au (1000s t. oz)	Au Grade (ppm)
<b>Measured</b>	Pit B	2,584	119	1.44
	Pit A	281	15	1.61
	CX	9,447	436	1.44
	MAG	8,546	418	1.52
	<b>Total</b>	<b>20,857</b>	<b>988</b>	<b>1.47</b>
<b>Indicated</b>	Pit B	272	12	1.34
	Pit A	504	14	0.89
	CX	2,393	107	1.39
	MAG	4,279	171	1.24
	<b>Total</b>	<b>7,448</b>	<b>304</b>	<b>1.27</b>
<b>Measured + Indicated</b>	Pit B	2,856	131	1.43
	Pit A	785	29	1.14
	CX	11,840	543	1.43
	MAG	12,824	588	1.43
	<b>Total</b>	<b>28,306</b>	<b>1,291</b>	<b>1.42</b>
<b>Inferred</b>	Pit B	23	1	0.74
	Pit A	120	2	0.62
	CX	1,100	46	1.29
	MAG	288	13	1.42
	<b>Total</b>	<b>1,531</b>	<b>62</b>	<b>1.26</b>

- 1) The effective date of the Mineral Resources Estimate is May 4, 2021.
- 2) The Qualified Persons for the estimate are Terre Lane QP-MMSA and Hamid Samari QP-MMSA of GRE.
- 3) Mineral resources are not Mineral Reserves and are not demonstrably economically recoverable.
- 4) Mineral resources are reported at a 0.35 g/t cutoff, an assumed gold price of 1,800 \$/tr. oz, using variable recovery, a slope angle of 41 degrees, 6% royalty, heap leach processing cost \$9.92 per tonne (includes admin), CIL processing cost of \$17.63 per tonne (includes admin).

**Table 2 – Granite Creek Mine Project Underground Mineral Resource**

Resource Class	Tonnage (1000s of tonnes)	Gold Grade (g/t)	Gold Oz (1000s t. oz)
<b>Measured</b>	483	10.07	156
<b>Indicated</b>	525	10.70	181
<b>M&amp;I</b>	1,008	10.40	337
<b>Inferred</b>	741	13.41	319

1) Mineral Resources are not Mineral Reserves, and as such, do not have demonstrated economic viability.  
2) Cut-off is 5 gpt based on Mining Cost of \$100/ton, Process Cost of \$106/ton, recovery of 92%, and a gold price of \$1600/t. oz.  
3) Effective Date is May 4, 2021.  
4) Figures are rounded and may show apparent errors in subtotals.

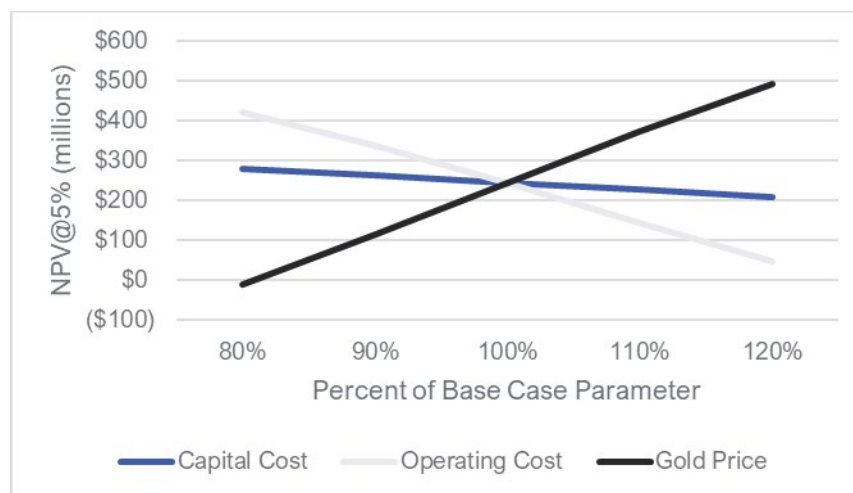
### Mining Methods

Mine plans for the resource areas were designed and planned using conventional open pit mining method for the low grade, widely distributed gold. The open pit areas are suitable for phased designs. Mechanized over-hand cut and fill underground mining method was selected for the narrow, high-grade deposits. This method was chosen for its ability to mine narrow vein deposits while minimizing dilution and reducing labor cost. The underground area utilizes the previous mine development and includes new development to replace the current access which will be destroyed when the CX pit is mined.

### Sensitivity Analysis

GRE evaluated the after-tax NPV@5% sensitivity to changes in gold price, capital costs, and operating costs. The results indicate that the after-tax NPV@5% is most sensitive to gold price, moderately sensitive to operating cost, and least sensitive to capital cost.

**Figure 2 - NPV@5% Sensitivity to Varying Gold Price, Capital Costs, and Operating Costs**



## **Conclusions and Next Steps**

GRE concluded that the project economics shown in the PEA are favorable, providing positive NPV values at varying gold prices, capital costs, and operating costs.

The current underground trial mining program is aimed at gaining a better understanding of the optimal mining cycle required for the project and to advance development of the underground workings to provide for more working faces to mine from in a commercial production scenario. The ongoing drill campaign is designed to delineate and expand the underground deposits and to better understand the metallurgy and geotechnical characteristics of the open pit opportunity. The Company has initiated preliminary permitting studies required for open pit mining. Expansion drilling is stepping out at depth and along strike where the deposit remains open and results from this program will be released throughout the balance of 2021 and well into 2022 with the target of completing a Feasibility Study in the future.

## **About i-80 Gold Corp.**

i-80 Gold Corp. is a well-financed Nevada-focused mining company with a goal of achieving mid-tier gold producer status. The Company is one of the largest holders of gold and silver resources in the State of Nevada with plans to advance multiple projects to production.

### **For further information, please contact:**

Ewan Downie – CEO

Matt Gili – President & COO

Matthew Gollat – EVP Business & Corporate Development

1.866.525.6450

info@i80gold.com

www.i80gold.com

### Global Mineral Resources

	Tonnes (kt)	Au Grade (Au g/t)	Ag Grade (Ag g/t)	Au Ounces (Koz)	Ag Ounces (Koz)
<b>Measured</b>					
Granite Creek - Open Pit	20,857	1.47		988	
Granite Creek - Underground	483	10.07		156	
Lone Tree - Open Pit					
McCoy-Cove - Underground					
Ruby Hill - Open Pit					
Ruby Hill - Underground					
<b>Indicated</b>					
Granite Creek - Open Pit	7,448	1.27		304	
Granite Creek - Underground	525	10.70		181	
Lone Tree - Open Pit	7,223	1.77		410	
McCoy-Cove - Underground	1,007	10.90	29.1	351	943
Ruby Hill - Open Pit	224,400	0.54	14.3	3,874	103,335
Ruby Hill - Underground	1,200	5.22	0.6	202	22
<b>Measured &amp; Indicated</b>	<b>263,144</b>	<b>0.76</b>	<b>12.33</b>	<b>6,465</b>	<b>104,300</b>
<b>Inferred</b>					
Granite Creek - Open Pit	1,531	1.26		62	
Granite Creek - Underground	741	13.41		319	
Lone Tree - Open Pit	50,734	1.69		2,764	
McCoy-Cove - Underground	3,867	10.90	20.6	1,353	2,565
Ruby Hill - Open Pit	162,700	0.39	14.0	2,062	73,472
Ruby Hill - Underground	8,210	6.02	1.7	1,588	439
<b>Inferred</b>	<b>227,783</b>	<b>1.11</b>	<b>10.4</b>	<b>8,148</b>	<b>76,476</b>

Notes:

1. MCOY-COVE: Mineral Resources were calculated at a gold price of US\$1500/oz, cut-off grade 0.141 opt Au. and is based on the Preliminary Economic Assessment issued by i-80 on April 13, 2021. Practical Mining LLC, under the supervision of Dagny Odell, P.E., Laura Symmes, SME, and Robert Raponi, P. Eng., each being Qualified Persons within the meaning National Instrument (NI) 43-101, was the lead consultant for the Project PEA.
2. GRANITE CREEK: Mineral Resources have an effective date of May 4, 2021 and are based on the mineral resource technical report issued by i-80 on October 29, 2021. The Qualified Persons for the estimate are Terre Lane QP-MMSA and Hamid Samari QP-MMSA of GRE. Open Pit Mineral resources are reported at a 0.35 g/t cutoff, an assumed gold price of 1,800 \$/tr. oz, using variable recovery, a slope angle of 41 degrees, 6% royalty, heap leach processing cost \$9.92 per tonne (includes admin), CIL processing cost of \$17.63 per tonne (includes admin). Underground mineral resources are reported at a cut-off grade of 5 gpt based on Mining Cost of \$100/ton, Process Cost of \$106/ton, recovery of 92%, and a gold price of \$1600/t. oz
3. LONE TREE: Mineral Resources were calculated at a gold price of US\$1650/oz, cut-off grade of 0.1 g/t Au and are based on the mineral resource technical report issued by i-80 on October 21, 2021. Mr. Abani Samal, Ph.D., CPG, RM- SME, Fellow-SEG a GeoGlobal, LLC Principal is the Qualified Person responsible for the Mineral Resource estimate.
4. RUBY HILL: Mineral Resources were calculated at a gold price of US\$1650/oz, cut-off grade 0.1 g/t Au. and are based on the mineral resource technical report issued by i-80 on October 22, 2021. Mr. Christopher Wright, P. Geo, a Wood Canada Ltd. employee, is the Qualified Person responsible for the Mineral Resource estimate.
5. Figures are rounded and may show apparent errors in subtotals.
6. Mineral resources are not mineral reserves and do not have demonstrated economic viability.

## Qualified Person

Global Resource Engineering, Ltd., under the supervision of Terre Lane, MMSA 01407QP, SME Registered Member 4053005, Todd Harvey, PhD, PE, SME Registered Member 4144120, Rick Moritz, MMSA, Hamid Samari, PhD, MMSA and Larry Breckenridge, P.E., all Qualified Persons within the meaning of National Instrument 43-101 (“NI 43-101”), are the Qualified Persons responsible for the Granite Creek Mine Project Preliminary Economic Assessment NI 43-101 Technical Report. A technical report detailing the mineral resource estimate has been filed with Canadian Securities regulators and can be found .

## Technical Information

Tim George, PE, Manager of Engineering Services, reviewed the technical and scientific information contained in this press release and is a Qualified Person within the meaning of NI 43-101.

---

Certain statements in this release constitute “forward-looking statements” or “forward-looking information” within the meaning of applicable securities laws, including but not limited to, financing transaction with Orion, completion of refurbishment and development activities at the Lone Tree project, commencement of mining operations at the Lone Tree and Buffalo Mountain projects or exploration and development activities the Ruby Hill mine. Such statements and information involve known and unknown risks, uncertainties and other factors that may cause the actual results, performance or achievements of the company, its projects, or industry results, to be materially different from any future results, performance or achievements expressed or implied by such forward-looking statements or information. Such statements can be identified by the use of words such as “may”, “would”, “could”, “will”, “intend”, “expect”, “believe”, “plan”, “anticipate”, “estimate”, “scheduled”, “forecast”, “predict” and other similar terminology, or state that certain actions, events or results “may”, “could”, “would”, “might” or “will” be taken, occur or be achieved. These statements reflect the Company’s current expectations regarding future events, performance and results and speak only as of the date of this release.

Forward-looking statements and information involve significant risks and uncertainties, should not be read as guarantees of future performance or results and will not necessarily be accurate indicators of whether or not such results will be achieved. A number of factors could cause actual results to differ materially from the results discussed in the forward-looking statements or information, including, but not limited to: failure to satisfy of the relevant conditions to the completion of the transactions described herein, failure to obtain the relevant regulatory approvals, material adverse changes, exercise of termination rights by any relevant party, unexpected changes in laws, failure to complete the Orion financing transaction on satisfactory terms, rules or regulations, or their enforcement by applicable authorities; the failure of parties to contracts with the company to perform as agreed; social or labour unrest; changes in commodity prices; and the failure of exploration, refurbishment, development or mining programs or studies to deliver anticipated results or results that would justify and support continued exploration, studies, development or operations.

Cautionary Note to U.S. Investors Concerning Estimates of Resources: This press release uses the term “inferred resources.” “Inferred resources” have a great amount of uncertainty as to their existence, and great uncertainty as to their economic and legal feasibility. Under Canadian rules, estimates of inferred mineral resources may not form the basis of a feasibility study or prefeasibility study, except in rare cases. Information contained in the press release containing descriptions of any mineral deposits may not be comparable to similar information made public by U.S. companies subject to the reporting and disclosure requirements under the United States federal securities laws and the rules and regulations thereunder that disclose mineral reserves and mineral resources in accordance with Industry Guide 7 or the SEC’s new mining disclosure rules in Regulation S-K 1300. SEC Industry Guide 7 does not recognize the existence of resources. Under Regulation S-K 1300, reserve and resource definitions are substantially similar to the corresponding CIM Definition Standards; however, there are differences between NI 43-101 and Regulation S-K 1300 and therefore information contained in the press release may not be comparable to similar information made public by public U.S. companies pursuant to the Regulation S-K 1300 or SEC Industry Guide 7.

1. Mineral resources are not mineral reserves and do not have demonstrated economic viability. See Global mineral resources table at the end of this press release for global mineral resource estimates and qualifiers.