



i-80 GOLD CORP

MARCH 2024

MADE IN THE U.S.A.

NYSE:IAUX | TSX:IAU

DISCLAIMER

Cautionary Statement Regarding Forward-Looking Information

Certain statements in this presentation constitute “forward-looking statements” or “forward-looking information” within the meaning of applicable securities laws, including but not limited to statements or information regarding: completion of refurbishment and development activities at the Long Tree project, commencement of mining operations at the Lone Tree project (including Buffalo Mountain), Granite Creek project, the Ruby Hill mine and the McCoy Cove project, mineral resource and reserve estimates and exploration and development potential, refractory processing capabilities and production targets.

Such statements and information involve known and unknown risks, uncertainties and other factors that may cause the actual results, performance or achievements of i-80 Gold Corp. (“i-80” or the “Company”), its projects, or industry results, to be materially different from any future results, performance or achievements expressed or implied by such forward-looking statements or information. Such statements can be identified by the use of words such as “may”, “will”, “could”, “intend”, “expect”, “believe”, “plan”, “anticipate”, “estimate”, “scheduled”, “forecast” and other similar terminology, or may state that certain actions, events or results “may” “would”, or “could” be taken, occur or be achieved. These statements reflect the Company’s current expectations regarding future events, performance and results and speak only as of the date of this presentation. The Company disclaims any intention or obligation to update or revise any forward-looking statements, whether as a result of new information, future events or otherwise except as required by applicable law.

Forward-looking statements and information involve significant risks and uncertainties, should not be read as guarantees of future performance or results and will not necessarily be accurate indicators of whether or not such results will be achieved. A number of factors could cause actual results to differ materially from the results discussed in the forward-looking statements or information, including, but not limited to, the risk factors described under the heading “Risk Factors” beginning on page 40 of the Company’s Annual Information Form for the year ended December 31, 2021, as well as those under the heading “Risks and Risk Management” beginning on page 18 of the Company’s management discussion and analysis for the three months ended March 31, 2023 and page 30 in the Company’s management’s discussion and analysis for the three months and year ended December 31, 2022, available on SEDAR at www.sedar.com and on the SEC’s website at www.sec.gov. Readers are encouraged to carefully review these risk factors as well as the Company’s other filings with the Canadian Securities Administrators and the U.S. Securities and Exchange Commission.

Cautionary Note to U.S. Investors Concerning Estimates of Resources

This presentation uses the term “inferred resources”. “Inferred resources” have a great amount of uncertainty as to their existence, and great uncertainty as to their economic and legal feasibility. Under Canadian rules, estimates of inferred mineral resources may not form the basis of a feasibility study or prefeasibility study, except in rare cases. Information contained in this presentation containing descriptions of any mineral deposits may not be comparable to similar information made public by U.S. companies subject to the reporting and disclosure requirements under United States federal securities laws and the rules and regulations thereunder that disclose mineral reserves and mineral resources, including the SEC’s new mining disclosure rules in Regulation S-K Subpart 1300 (“S-K 1300”). Under S-K 1300, reserve and resource definitions are substantially similar to the corresponding definitions under Canadian rules, including the Canadian Institute of Mining, Metallurgy and Petroleum Definition Standards. However, there are differences between National Instrument 43-101 – Standards of Disclosure for Mineral Projects (“NI 43-101”) and S-K 1300, and therefore information contained in the presentation may not be comparable to similar information made public by public U.S. companies pursuant to Regulation S-K 1300.

Foreign Exchange Assumptions

All amounts discussed herein are denominated in U.S. dollars unless otherwise specified.

No Advertisement or Solicitation

This presentation is not, and under no circumstances is to be construed as, a prospectus, an advertisement or a public offering of these securities in Canada, the United States or any other jurisdiction. No securities commission or similar authority in Canada or the United States has reviewed or in any way passed upon this document or the merits of the securities described herein, and any representation to the contrary is an offence. This presentation does not constitute an offer to sell or the solicitation of an offer to buy, nor shall there be any sale of the securities of i-80 in any jurisdiction in which such offer, solicitation or sale would be unlawful. The securities described herein have not been and will not be registered under the United States Securities Act of 1933, as amended (the “1933 Act”), or any state securities laws and may not be offered or sold within the United States or to, or for the account or benefit of U.S. persons (as defined in Regulation S under the 1933 Act) absent an exemption from registration.

Unless otherwise indicated, i-80 has prepared the technical information in this presentation (“Technical Information”) based on information contained in the technical reports (collectively the “Technical Reports”) concerning the Ruby Hill project, the Lone Tree project, the McCoy Cove project and the Granite Creek project available under i-80 ’s profile on SEDAR at www.sedar.com. Each Technical Report was prepared by or under the supervision of a qualified person (a “Qualified Person”) as defined in NI 43-101. For readers to fully understand the information in this presentation, they should read the Technical Reports in their entirety, including all qualifications, assumptions and exclusions that related to the information set out in this presentation which qualifies the Technical Information. Readers are advised that mineral resources that are not mineral reserves do not have demonstrated economic viability. The Technical Reports are each intended to be read as a whole, and sections should not be read or relied upon out of context. The Technical Information is subject to the assumptions and qualifications contained in the Technical Reports. All maps and diagrams are for illustrative purposes only and not to scale.

The technical information in this presentation has been reviewed by Tyler Hill, Chief Geologist, i-80 Gold Corp., who is a qualified person for the purposes of NI 43-101.

NOTE	PROJECT/PROPERTY	COMPANY	REPORT DATE
1	Preliminary Economic Assessment for the Cove Project, Lander County, Nevada	i-80 GOLD CORP	January 25, 2021
2	Preliminary Economic Assessment NI 43-101 Technical Report Granite Creek Mine Project, Humboldt County, Nevada, USA	i-80 GOLD CORP	November 8, 2021
3	Technical Report on the Mineral Resource Estimates for the Lone Tree Deposit, Nevada	i-80 GOLD CORP	October 21, 2021
4	NI 43-101 Report on 2021 Ruby Hill Mineral Resource Estimate, Eureka Country, Nevada, USA	i-80 GOLD CORP	October 22, 2021

SUPERIOR PERFORMANCE

U.S. Focused Gold Producer

- Nevada is consistently ranked as one of the world's most favourable jurisdictions for mining
- i-80 is one of the largest holders of gold and silver resources in the United States
- Target of building the 2nd largest gold producer in the USA with a 5-year production growth plan
- Experienced Management Team with a history of success in mine development / operations, exploration and corporate growth

EXECUTING OUR PLAN

01

US-FOCUSED GOLD EXPLORER, DEVELOPER & PRODUCER

Largest US “Pure-Play” gold producer
Properties are 100 % in Nevada

02

MAJOR RESOURCE BASE

M&I: 6.465 M oz Au & 104.3 M oz Ag
Inf.: 8.148 M oz Au & 76.4 M oz Ag

03

GROWING PRODUCTION PROFILE

Goal to become the 2nd largest gold producer in the US (one mine beginning production, 3 projects in development / permitting)

04

TIER 1 MANAGEMENT TEAM

Credited with multiple major resource discoveries
Strong history of building and managing mining operations
Corporate M&A (i-80 created as a “SpinCo” in the takeover of Premier)

1. See Disclaimer for Notes, Forward-Looking Statements and referenced technical reports
2. See Appendix for i-80 Gold Corp's Mineral Resources

EXPERIENCED LEADERSHIP

SUCCESSFUL HISTORY IN NEVADA OPERATIONS



EWAN DOWNIE

Chief Executive
Officer & Director

25+ years
exploration & mine
operation
experience

Formerly, President
& CEO Premier
Gold Mines &
Wolfden Resources

Recipient of the
PDAC, Bill Dennis
Prospector of The
Year Award



MATT GILI

President & COO

30+ years
operational &
leadership
experience

Previously Chief
Technical Officer for
Barrick Gold
Corporation

Formerly Executive
General Manager -
Cortez District,
Nevada

Formerly COO –
Oyu Tolgoi, LLC for
Rio Tinto



MATT GOLLAT

Executive Vice-
President

16+ years
experience in the
public minerals and
mining industry

Formerly VP
Business
Development
Premier Gold Mines

Formerly Director,
NOMAD Royalty
until its sale in
August 2022



RYAN SNOW

Chief Financial Officer

18+ years financial
management
experience in
Canada & USA

Formerly Vice-
President of Finance
for Nevada Copper

Formerly Vice-
President, Finance
and Controller for
Tahoe Resources



TODD ESPLIN

Technical Director

35+ years of
experience in
Processing, Mining
& Metallurgy

Formerly Mine
Manager, Process
Manager (Kinross)

Previous HR
Manager, Autoclave
Superintendent &
Metallurgical
Services
Superintendent
(Barrick Goldstrike)



ANDY COLE

Senior Mining &
Processing Advisor

30+ years of
experience in mine
development,
processing and
production

Formerly General
Manager of
Goldstrike -
Nevada's largest
mining facility



JON LAIRD

Cove & Granite Creek
Project Manager

25+ years mine
operation
experience

Formerly, Mining
Manager at multiple
Barrick sites
(Turquoise Ridge,
Hemlo)

Previous Project
Manager
responsible for the
El Nino u/g Mine
(South Arturo /
Goldstrike)



TONY CARROLL

Lone Tree Plant
Project Director

25+ years
leadership
experience in
mining, processing,
operations & capital
projects

Formerly Process
Manager, Capital
Projects Manager,
(Barrick)

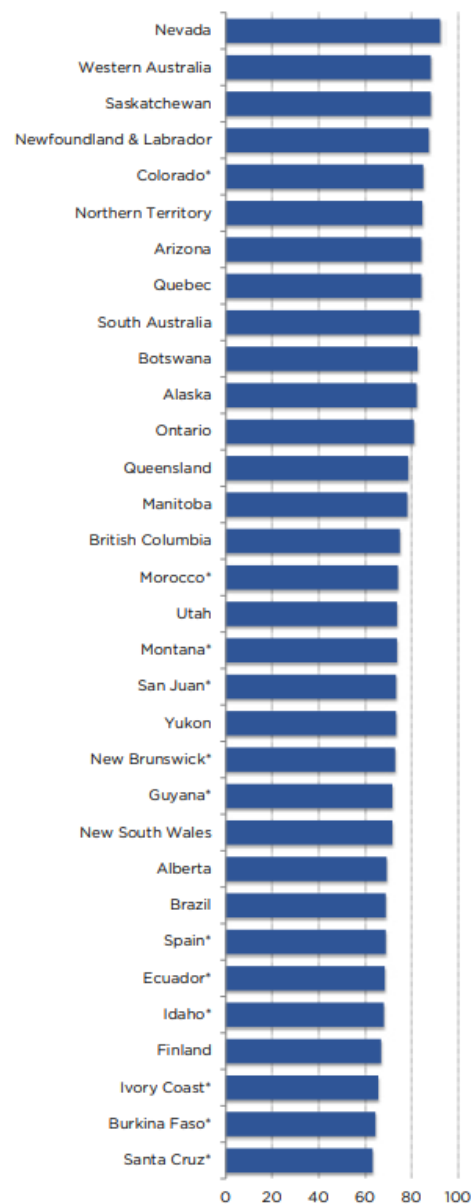
Previously managed
large capital
projects at
Goldstrike & Cortez
Mines in Nevada

WHY I-80 GOLD

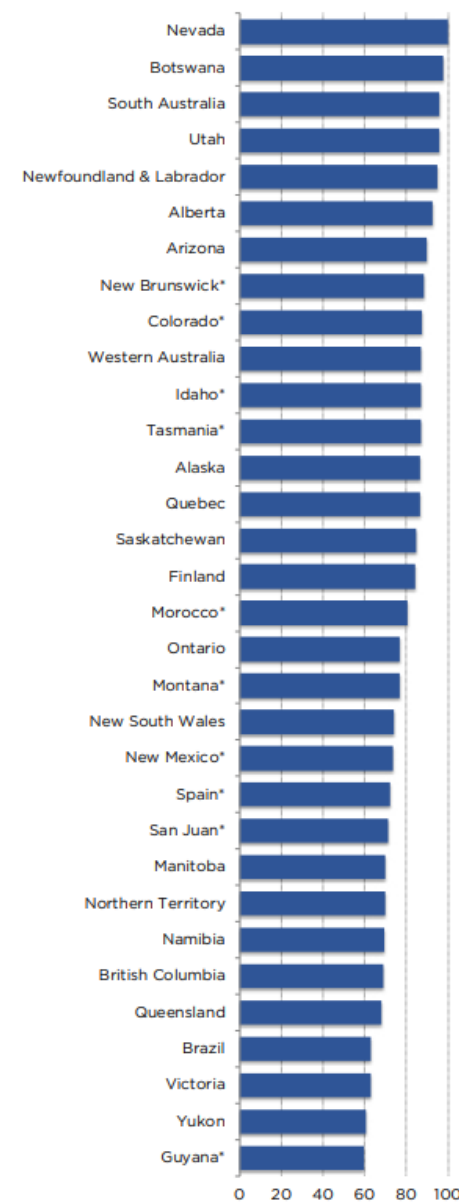
100% US-Projects (All in Nevada)

- Nevada is ranked as the world's #1 most favourable jurisdiction for both Investment Attractiveness and Policy Perception by the Fraser Institute
 - Security of land ownership
 - Stable Government
 - History of mine development
- If Nevada were a country, it would rank amongst the world's top 5 largest gold producing nations

Investment Attractiveness Index



Policy Perception Index

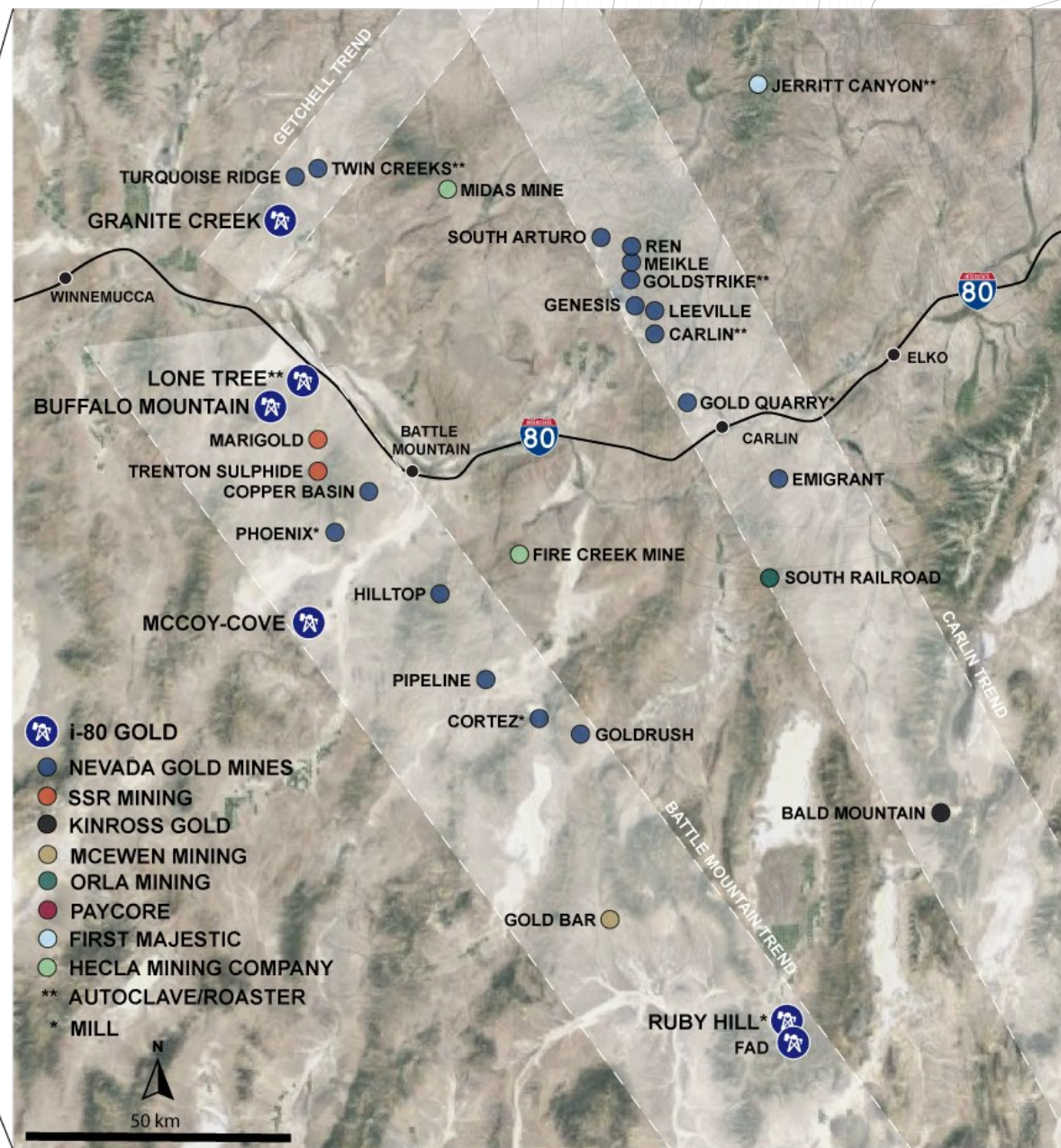


1. See Disclaimer for Notes and Forward-Looking Statements

CENTRAL NEVADA

World's Most Productive Gold District

- The Carlin & Battle Mountain Trends in Central Nevada collectively represent the world's most productive gold "district"
- i-80 is the largest holder of gold resources in the Central Nevada district next to Nevada Gold Mines (Barrick-Newmont JV)
- Five deposits position i-80 as one of the largest holders of gold & silver resources in the United States:
 - M&I: 6.465 M oz Au & 104.3 M oz Ag
 - Inf: 8.148 M oz Au & 76.4 M oz Ag
- Two processing facilities including an autoclave



PROCESSING

Competitive Advantage

- Lone Tree Facility
 - Positions i-80 as one of only three companies in Nevada with refractory processing capabilities
 - Strategically located facility, situated on Interstate 80 and proximal to the Central Nevada Railway
- Ruby Hill Facility
 - Assessing the utilization of the Ruby Hill plant for gold and/or base metal processing
- Oxide and sulphide processing agreements in place with NGM for 1,000 tpd Autoclave, 750 tpd Roaster and ore sale

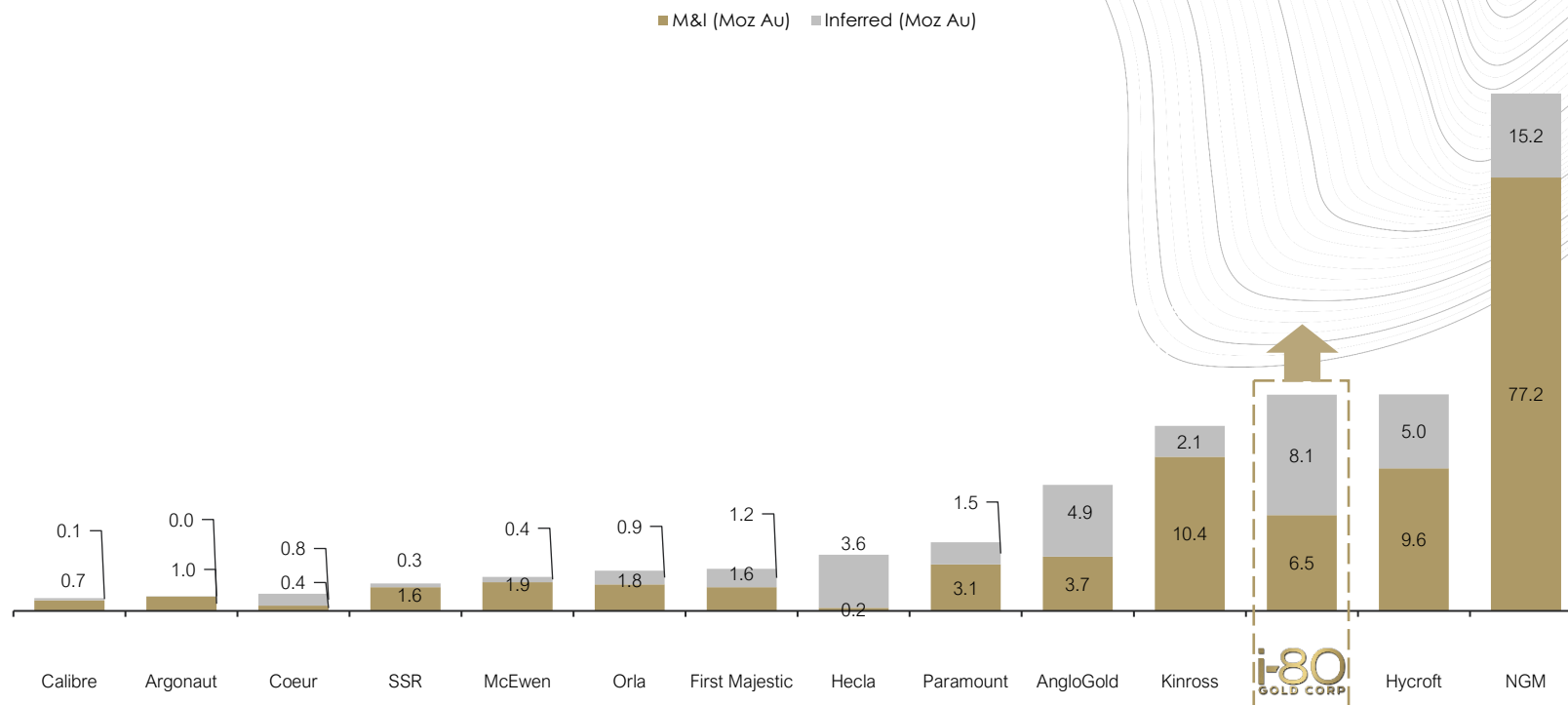


FUNDAMENTALS

Nevada's Premier Growth Company

- Second only to Nevada Gold Mines for gold resources contained within the Carlin/Battle Mountain Trends
- Targeting a significant increase in AuEq resources following the 2023 drilling campaigns:
 - Underground and surface drilling in the SPZ at Granite Creek in 2023
 - Ruby Deep and 428 drill program in H2
 - Working to upgrade Ruby Hill polymetallic deposits (Blackjack, Hilltop & FAD)
- i-80 is also one of the largest holders of silver resources amongst US companies:
 - 104.3 M oz Ag Indicated
 - 76.5 M oz Ag Inferred
 - Expected to increase with the inclusion of Blackjack, Hilltop & FAD

Nevada Only - M&I Resources (Moz Au) and Inferred Resources (Moz Au)



1. Source: S&P Capital IQ Pro
2. See Disclaimer for Notes, Forward-Looking Statements and referenced technical reports
3. See Appendix for i-80 Gold Corp's Mineral Resources

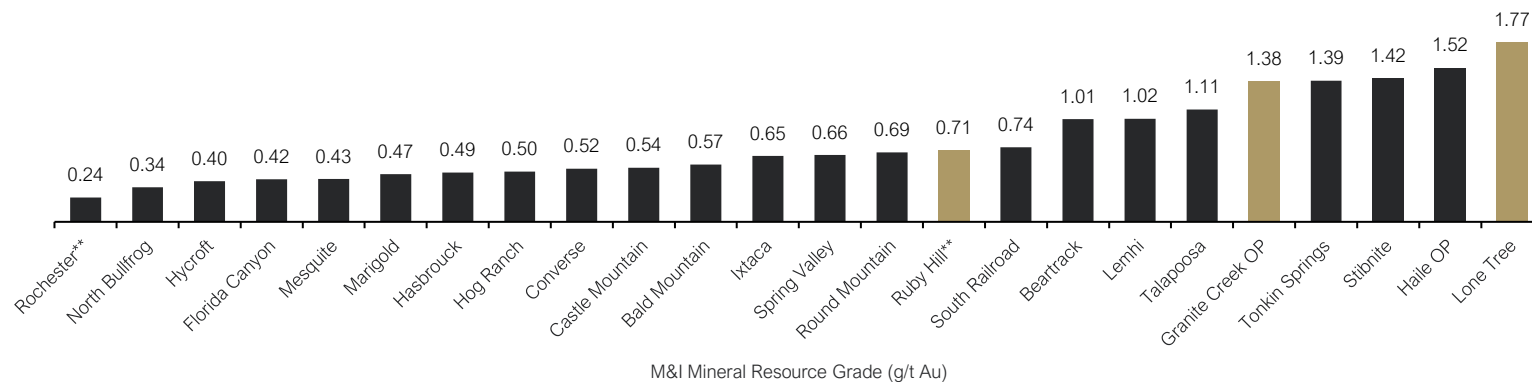
FUNDAMENTALS

Superior Gold Grades

- i-80 open-pit grades rank among the highest-grade in the US, especially when compared to heap leach projects
- i-80's three underground deposits compare favourably with peer projects – grades at Granite Creek and Cove are in excess of 10 g/t Au
- The Hilltop poly-metallic (Au/Ag/Zn/Pb) Zone ranks amongst the world's highest-grade new discoveries in recent history
- In late 2021, zinc was added to the critical metals list by the US Geological Survey

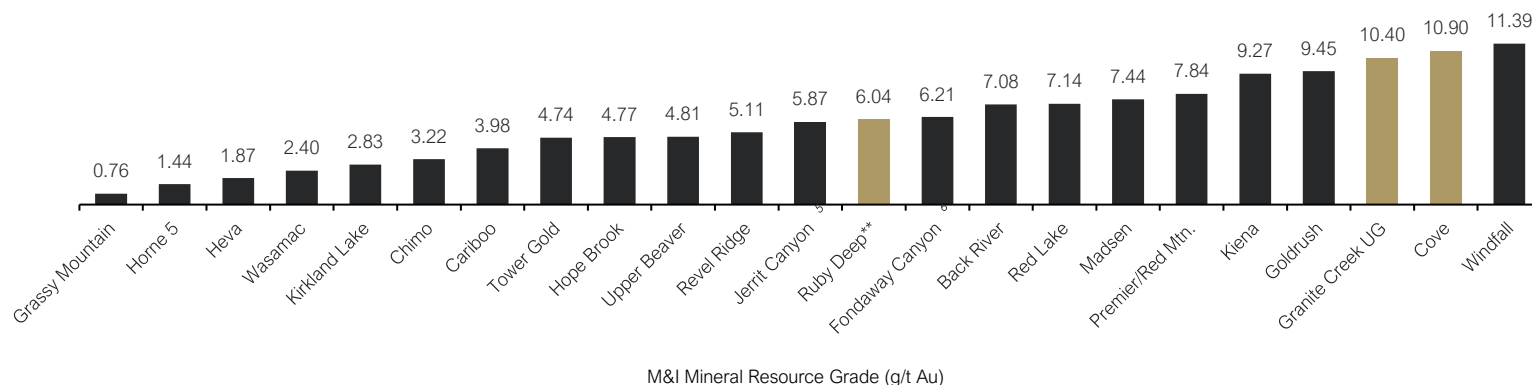
Nevada Only - M&I Resources (Moz Au) and Inferred Resources (Moz Au)

SELECT NORTH AMERICAN OPEN PIT GOLD PROJECTS - GRADE (G/T AU)



**Inferred Resources AuEq. grade used for Ruby Hill

SELECT NORTH AMERICAN UNDERGROUND GOLD PROJECTS - GRADE (G/T AU)



**Inferred Resources AuEq. grade used for Ruby Hill

1. Source: S&P Capital IQ Pro
2. AuEq. is based on a gold price of US\$1,667/oz and a silver price of US\$19.8/oz and excludes all other metals
3. Ruby Deep is based on underground inferred resources
4. See Disclaimer for Notes, Forward-Looking Statements and referenced technical reports
5. See Appendix for i-80 Gold Corp's Mineral Resources

U.S. PRODUCER

Sequencing Two Processing facilities

- Three deposits being developed with processing at the Lone Tree facility (autoclave)
- Completing work for the conversion of the Ruby Hill plant to process polymetallic mineralization (floatation)
- 5-year target: Production of >400,000 ounces of AuEq per year



Mineral Resources – Underground			
Category	Tonnage (kt)	Au Grade (g/t)	Gold (Koz)
Measured & Indicated	1,008	10.40	337
Inferred	741	13.41	319

- Underground development program underway

- Resource updates following 2023 drill program – to include initial polymetallic resources
- Permitting for underground program
- Processing facility is being considered for conversion to a floatation plant (base metals)

Mineral Resources - Underground					
Category	Tonnage (kt)	Au Grade (g/t)	Ag Grade (g/t)	Gold (koz)	Silver (koz)
Indicated	1,007	10.9	29.1	351	943
Inferred	3,867	10.9	20.6	1,353	2,565

- Underground exploration program underway

1. See Disclaimer for Notes, Forward-Looking Statements & referenced technical reports

2. The production growth plan is subject to several assumptions including but not limited to targeted mining rates and costs, availability of personnel, contractors, equipment and supplies, the receipt on a timely basis of required permits and licenses, cash availability for capital investments from cash balances, cash flow from operations, or from a third-party financing sources on terms acceptable to the Corporation, no significant events which impact operations, commodity prices, and exchange rates. Assumptions used for the purposes of guidance may prove to be incorrect and actual results may differ from those anticipated. See below "Cautionary Statement Concerning Forward-Looking Statements".

- Central Processing Autoclave Facility
- Operating Heap Leach
- Operating Laboratory Facility
- Climate Controlled Warehouse
- Core Cutting and Logging Facility
- Full Maintenance Shops
- Office Complex
- Site flotation circuit (1.8Mt/year)

100% OWNED

LONE TREE MINE

OUR COMPETITIVE ADVANTAGE



100% OWNED

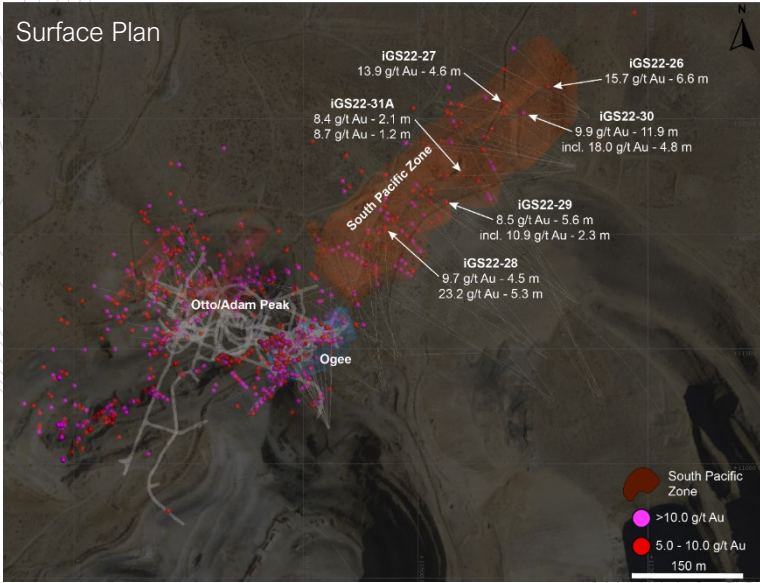
GRANITE CREEK MINE

NEVADA'S NEWEST HIGH-GRADE GOLD MINE



GRANITE CREEK

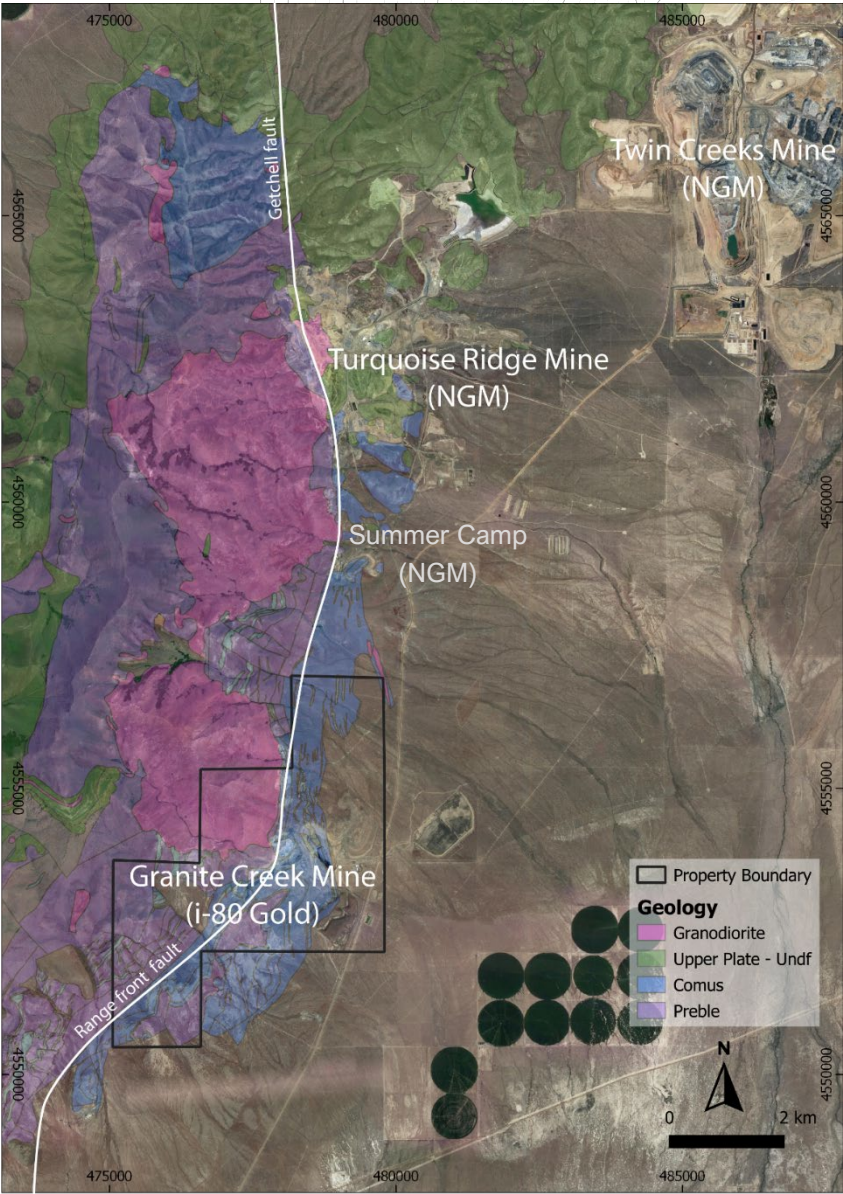
- i-80's first underground operation located immediately South of NGM's Twin Creeks and Turquoise Ridge mining operations
- NGM interim processing agreement allows i-80 to advance mine development with an initial priority on the Ogee Zone – positive initial grade reconciliation
- The discovery of the **South Pacific Zone** has the potential to significantly increase high-grade resources located adjacent to existing mine workings



UNDERGROUND AND OPEN PIT RESOURCES

Mineral Resources – Underground			
Category	Tonnage	Au Grade	Gold
	(kt)	(g/t)	(Koz)
Measured & Indicated	1,008	10.40	337
Inferred	741	13.41	319

Mineral Resources – Open Pit			
Category	Tonnage	Au Grade	Gold
	(kt)	(g/t)	(Koz)
Measured & Indicated	28,306	1.42	1,291
Inferred	1,531	1.26	62



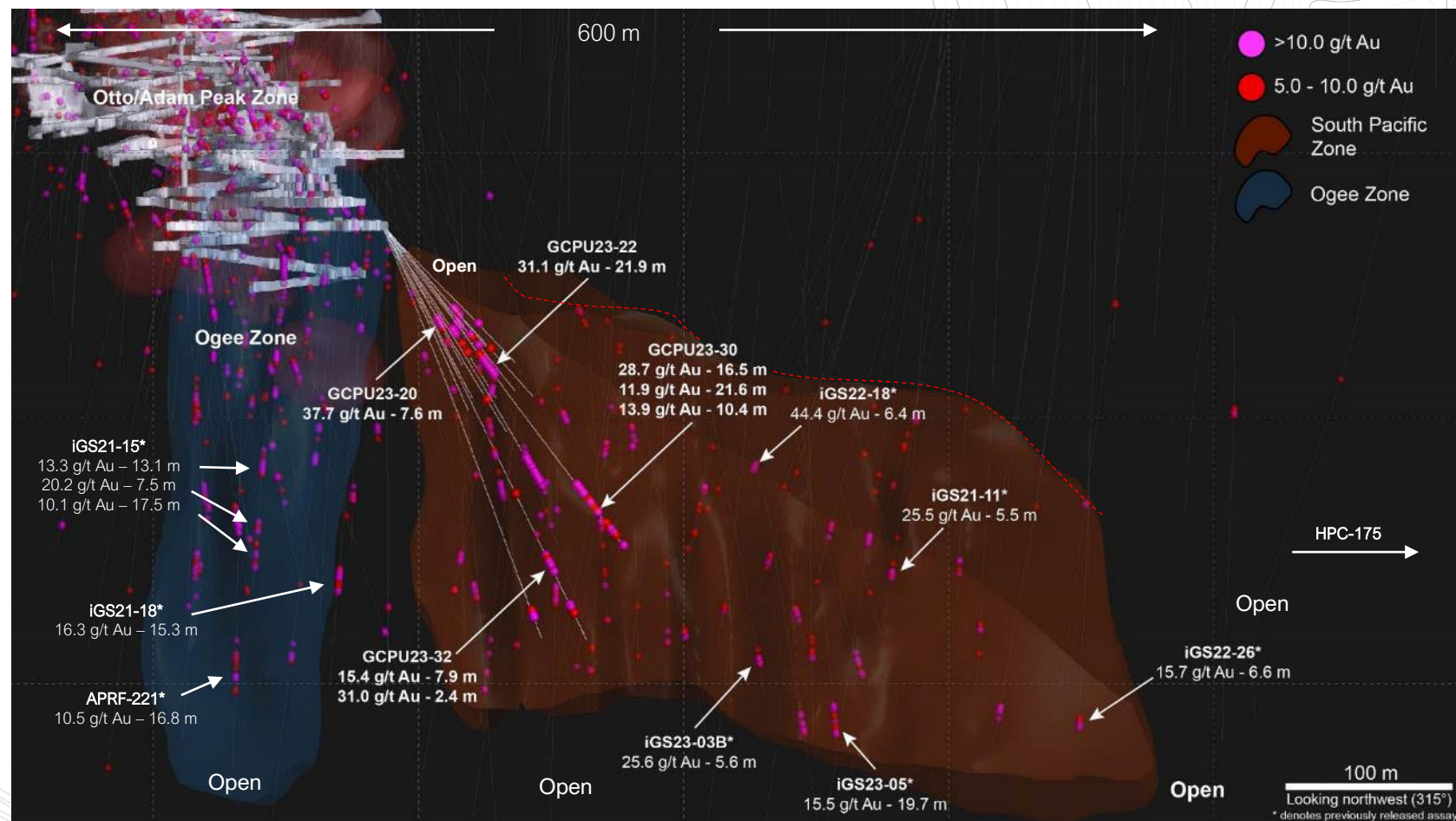
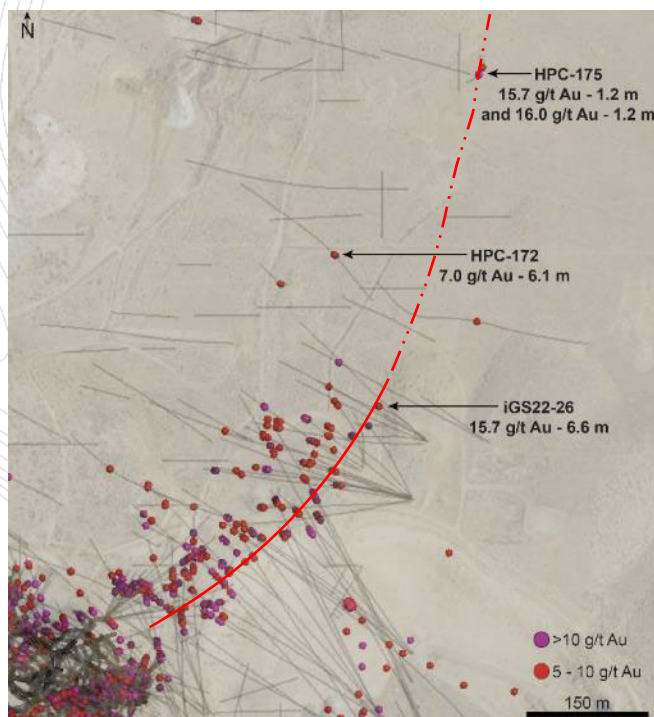
1. See Disclaimer for Notes, Forward-Looking Statements & referenced technical reports

2. See Appendix for i-80 Gold Corp's Mineral Resources. Effective date May 4, 2021, Underground gold price \$1,600/oz, Open pit gold price \$1,650/oz Au, Open pit cut-off grade 0.35 g/t Au

GRANITE CREEK

Resource Expansion

- The SPZ Zone remains open at depth and along strike to the north
- Surface & underground results demonstrate grades consistently in excess of 10 g/t Au over expected mine widths
- High-grade intercepts in historic hole HPC-175 (Comus contact) 400 m to the north suggest the potential to extend the strike-length of mineralization to >1 km



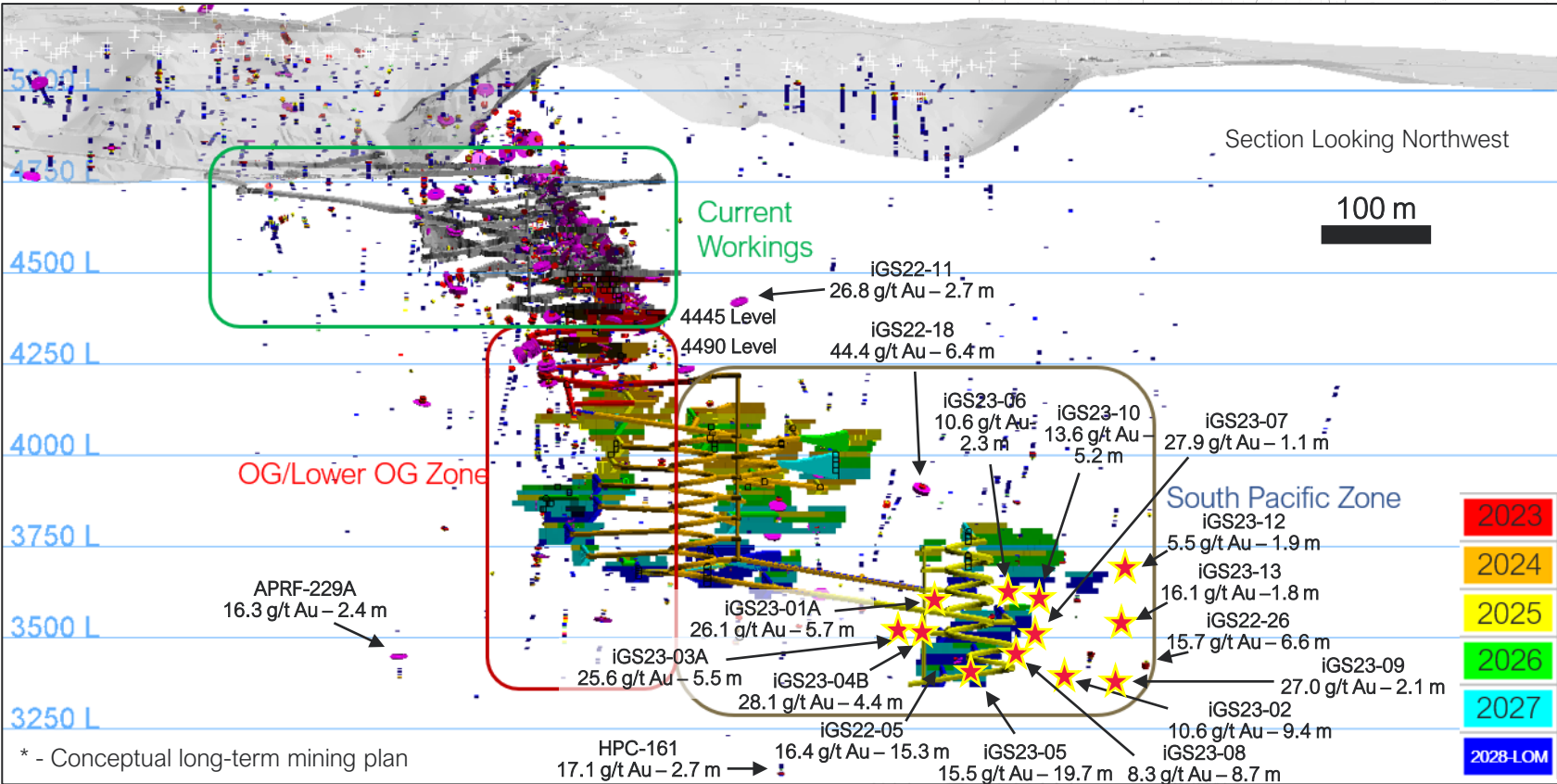
Average u/g intercept from initial release +22.0 g/t Au over 7.4m

Source: National Bank Research Note – Dec. 14, 2023

GRANITE CREEK

Underground Development

- Surface drilling of the South Pacific Zone in 2023 confirming continuity of high-grade mineralization:
 - iGS23-01 - 26.1 g/t Au over 5.7 m
 - iGS23-02 - 10.6 g/t Au over 9.4 m
 - iGS23-03 - 25.6 g/t Au over 5.5 m
 - iGS23-04 - 28.1 g/t Au over 4.4 m
 - iGS23-05 - 15.5 g/t Au over 19.7 m
- The SPZ is expected to become the primary ore source at Granite Creek - first stopes targeted for H1-2024
- Deposit remains completely open along strike to the north and at depth
- Additional drilling required to increase M+I resources



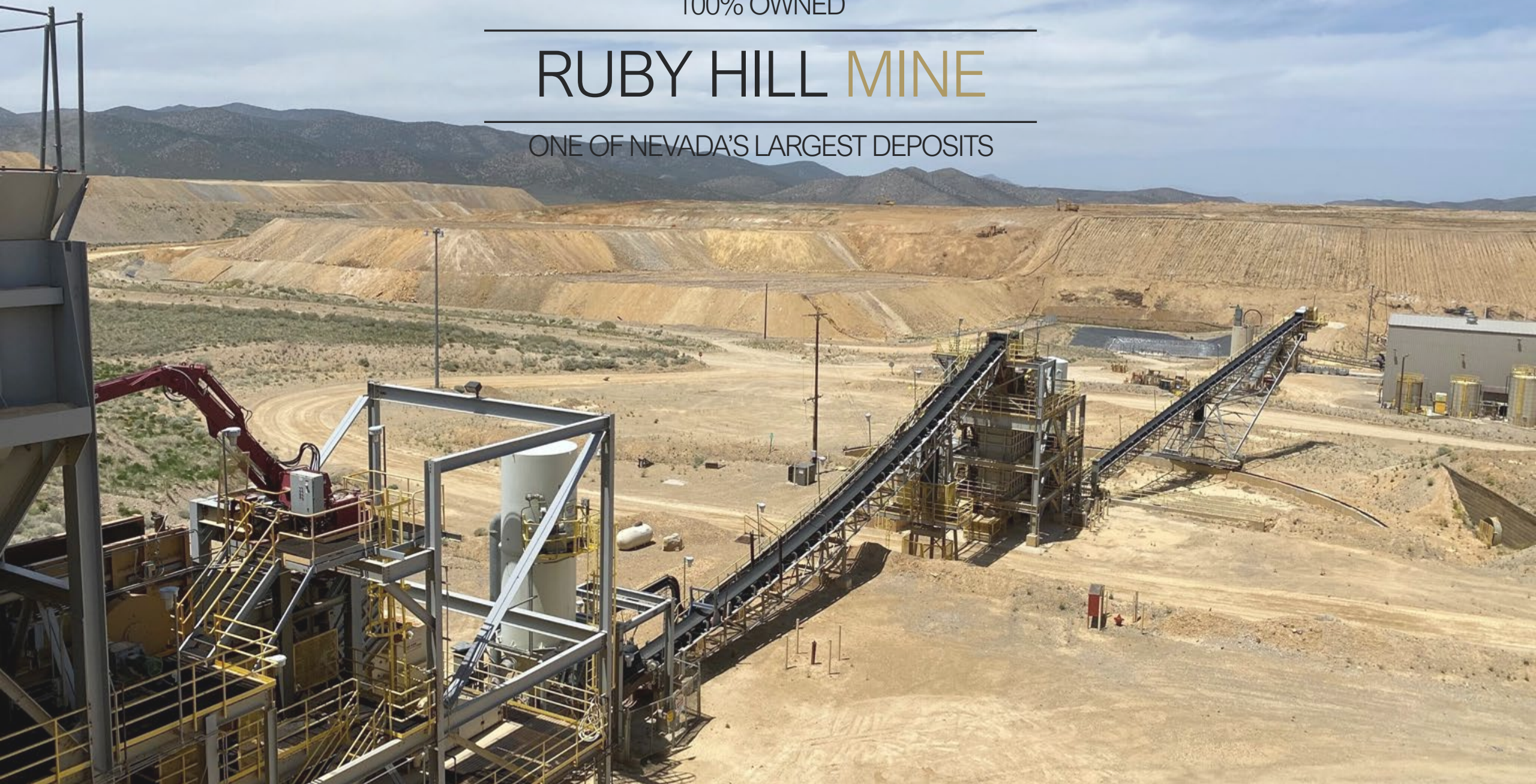
Level Grade Reconciliation (based on Company grade control sampling)

	Tonnage	Au Grade	Contained Gold
	(tonne)	(g/t)	(oz)
Level 4430	9,909	10.7	3,103
Level 4445	10,612	14.0	4,768
Level 4475	11,404	11.9	3,940
Level 4490	10,874	11.1	3,870

100% OWNED

RUBY HILL MINE

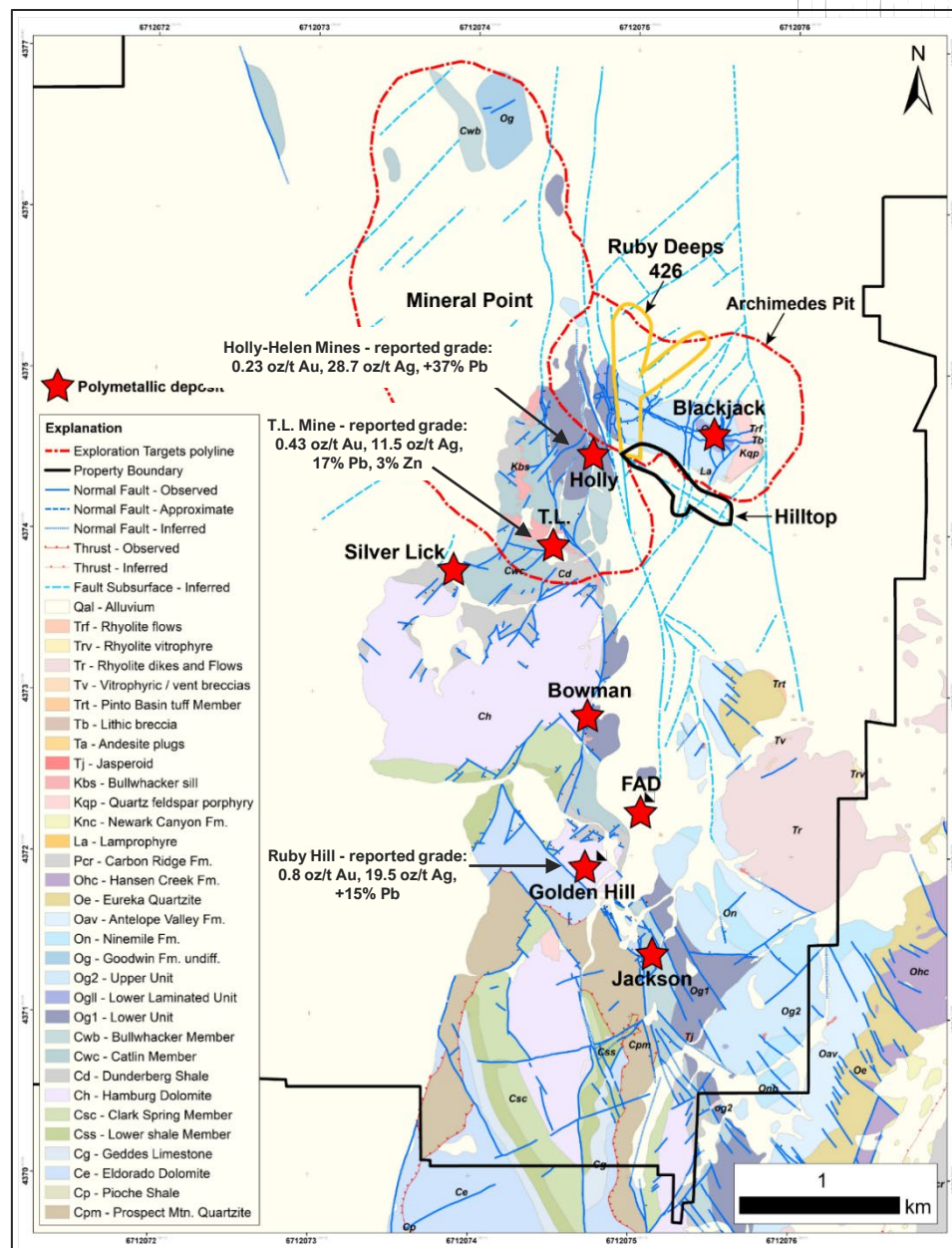
ONE OF NEVADA'S LARGEST DEPOSITS



RUBY HILL

Ultimate Optionality

- Advancing proposed partnership to accelerate development & reduce capital
- The Eureka District ranks as one of the world's highest-grade CRD districts with a 150-year history of production
- Poly-Metallic Mineralization:
 - Poly-Metallic CRD (Hilltop – FAD)
 - Skarn Base Metal (Blackjack – E Hilltop)
- Gold Mineralization:
 - Refractory (Ruby Deeps - 428 - Lower Jack)
 - Oxide Open Pit (Mineral Point – Gold Hill)
 - Gold-Sulphide (Tyche)
- On-site Processing Facilities – Operating heap leach and oxide processing plant
- Key Initiatives:
 - Complete permitting for u/g program
 - Advance metallurgy and mill retrofit plans
 - Exploration and definition drilling
 - Updated resource estimates to include Blackjack, Hilltop and FAD deposits



+ 4 km
Hilltop Corridor

1. See Disclaimer for Notes, Forward-Looking Statements & referenced technical reports

2. The historical estimates contained in this presentation have not been verified as current mineral resources. A "qualified person" (as defined in NI 43-101) has not done sufficient work to classify the historical estimate as current mineral resources or mineral reserves, and the Company is not treating the historical estimate as current mineral resources or mineral reserves

RUBY HILL

Multiple New Discoveries

- Ongoing drill program to expand gold resources in the Ruby Deeps deposit and definition and expansion drilling in the Blackjack, Hilltop and FAD Zones
- Planning follow-up drilling of the high-grade “428” gold target that returned 12.3 g/t Au over 10.7 m

- Multiple discoveries since mid-2022:

Lower Hilltop Zone – June 2022 (iRH22-25):

- 238.8 g/t Ag, 11.0 % Zn & 9.0 % Pb over 9.4 m

Upper Hilltop Zone – Aug. 2022 (iRH22-43):

- 515.3 g/t Ag, 10.5% Zn, 28.9% Pb, & 0.9 g/t Au over 28.3 m

East Hilltop (Skarn) – Sept. 2022 (iRH22-61):

- 12.3 % Zn over 39.6 m

East Hilltop – Feb. 2023 (iRH23-02/10):

- 226.1 g/t Ag, 9.7 % Zn & 10.0 % Pb over 8.3 m

428 Gold Zone – October 2022 (iRH22-65):

- 12.3 g/t Au over 10.7 m

Tyche Gold Zone – July 2023 (iRH23-18A):

- 45.4 g/t Au & 50.2 g/t Ag over 17.5 m



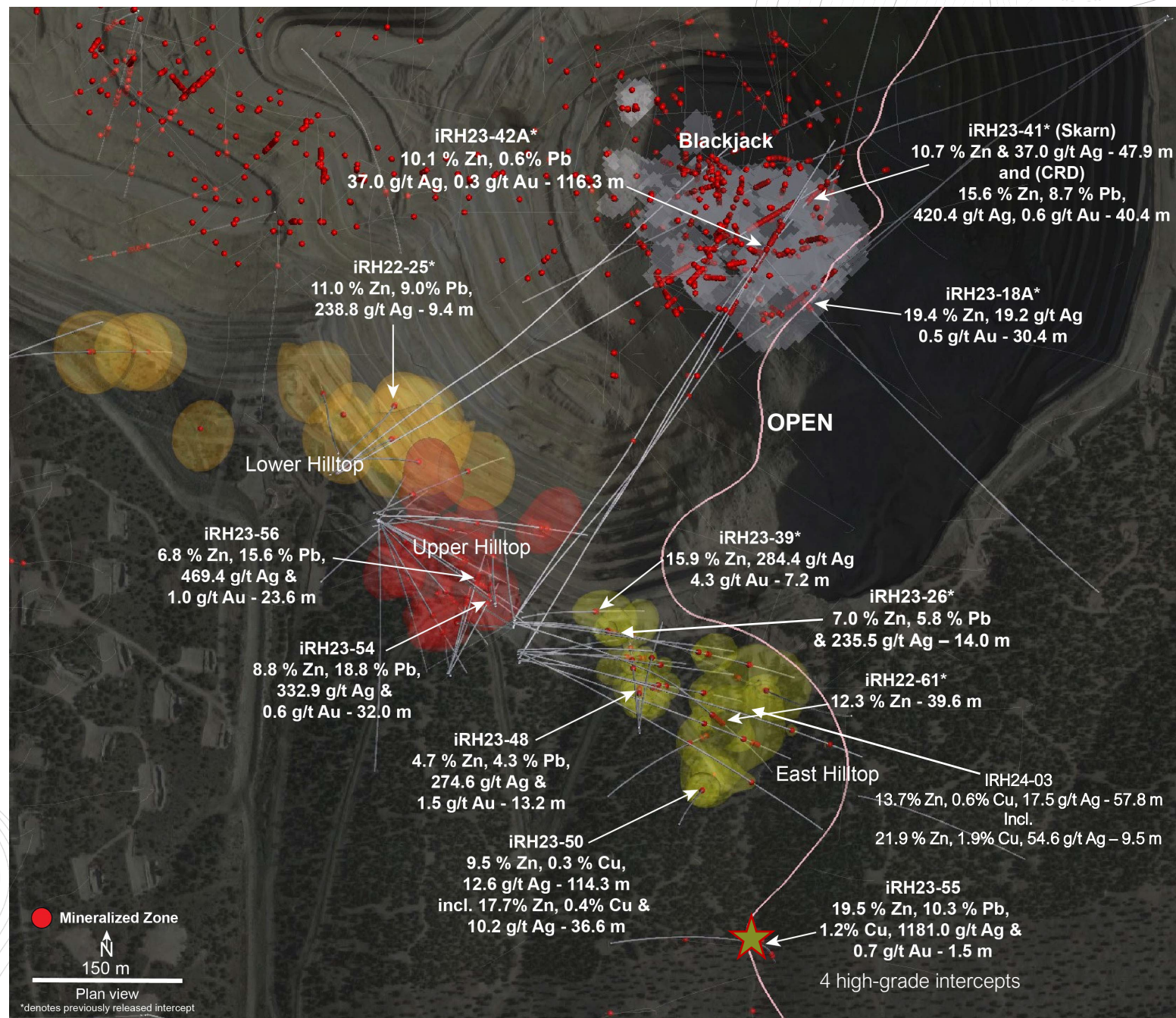
POLYMETALLIC ZONES

CRD Mineralization

- Drilling has defined multiple zones of CRD mineralization along the Hilltop fault structure over a strike length of ~750 m
- High-grade mineralization in the Upper, Lower and East Hilltop Zones

Skarn Mineralization

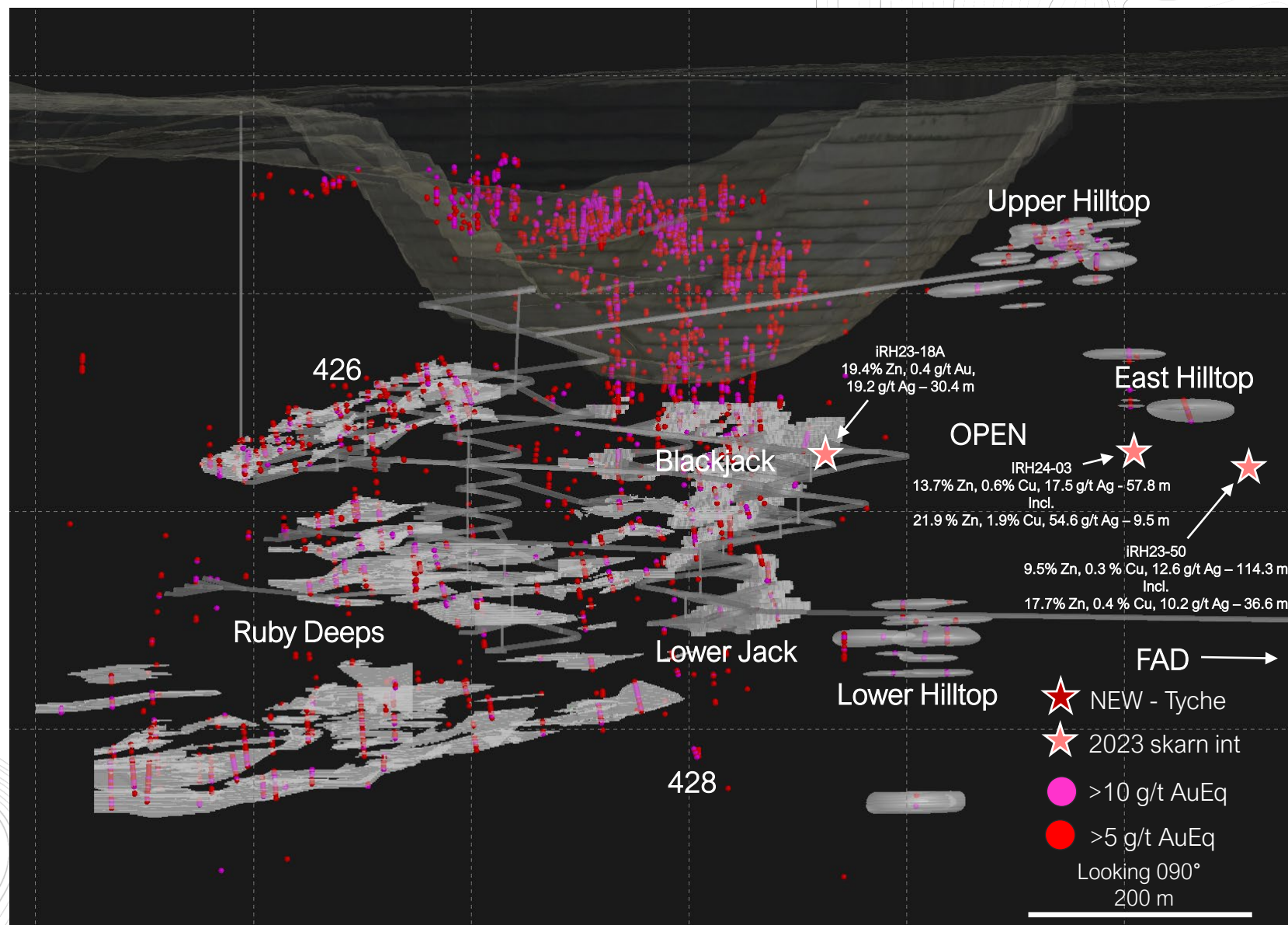
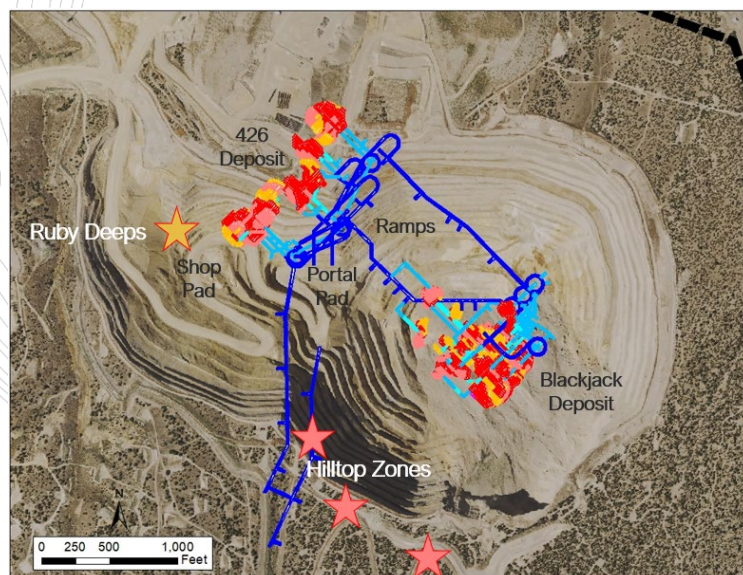
- South-most hole drilled at Blackjack:
 - 19.4% Zn & 19.2 g/t Ag - 30.4 m
- South-most hole drilled at East Hilltop:
 - 9.5% Zn, 0.3% Cu & 12.6 g/t Ag - 114.3 m
- ~300 m gap between Hilltop and Blackjack is untested
- Exploration drilling recently intersected skarn mineralization ~150m to the South of East Hilltop with 4 high-grade sections including:
 - 19.5% Zn, 10.3% Pb, 1.2% Cu, 1181 g/t Ag & 0.7 g/t Au over 1.5 m
- Wide open for expansion



DEVELOPMENT PLAN

Multiple Deposits – Shared Infrastructure

- Designing infrastructure to access both gold (Ruby Deeps & 426) and polymetallic base metal deposits (Blackjack & Hilltop)
- Underground platforms will provide improved locations to target expansion of mineralized zones & reduce costs
- Detailed work on conversion of the Ruby Hill plant is underway



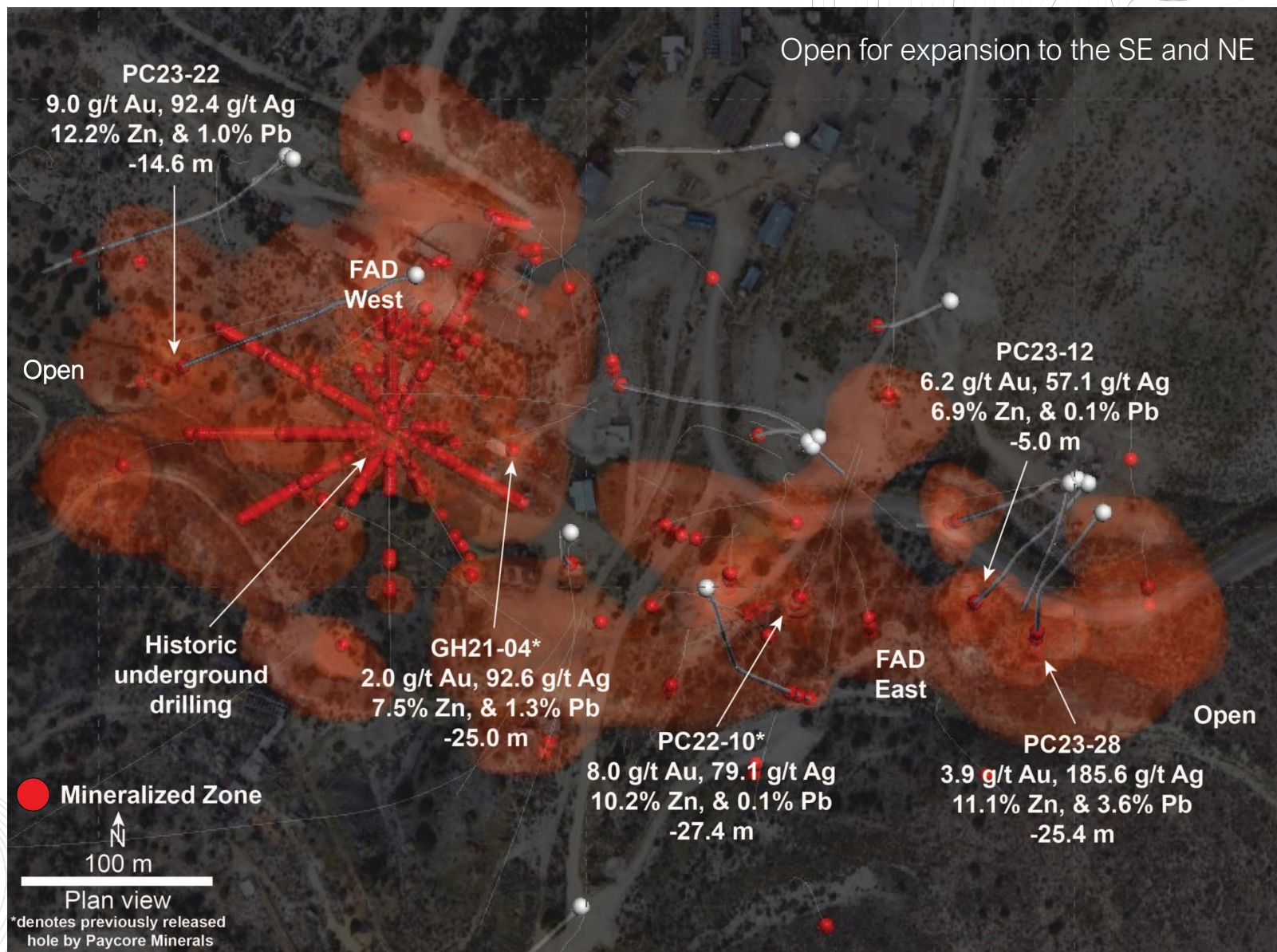
1. See Disclaimer for Notes, Forward-Looking Statements & referenced technical reports

2. USD values used to calculate AuEq; Au \$1600.0/oz, Ag \$20.0/oz, Pb \$1984.2/mt, Zn \$2,755.6/mt. Formula used: $AuEq = \text{Gold g/t} + \text{Silver g/t} \times 0.0125 + \text{Zinc \%} \times 0.5357 + \text{Lead \%} \times 0.3857$. Values may not add precisely due to rounding. Gold equivalent (AuEq) is used for illustrative purposes, to express the combined value of Au, Ag, Pb, and Zn as a percentage of Au. Metallurgical Assumed recoveries are 90% for Au, 77% for Ag, 83% for Pb, 90% for Zn, based on recoveries at the Olympias Mine, a deposit of the same type.

FAD DEPOSIT

Deposit Definition

- Definition and expansion drill program completed in 2023 – recent results include:
 - 9.0 g/t Au, 92.4 g/t Ag, 12.2 % Zn & 1.0 % Pb over 14.6 m (PC23-22)
 - 3.9 g/t Au, 185.6 g/t Ag, 11.1 % Zn & 3.6 % Pb over 25.4 m (PC23-28)
- Deposit remains open for expansion to the East and West
- Positive initial metallurgical results:
 - Pb con 64.0%, Recovery 90.0%, Ag 3116 g/t
 - Zn con 56.4%, Recovery 83.2%, Ag 121 g/t
 - Au reports to pyrite concentrate



1. See Disclaimer for Notes, Forward-Looking Statements

2. USD values used to calculate AuEq: Au \$1600.0/oz, Ag \$20.0/oz, Pb \$1984.2/mt, Zn \$2,755.6/mt. Formula used: $AuEq = \text{Gold g/t} + \text{Silver g/t} \times 0.0125 + \text{Zinc \%} \times 0.5357 + \text{Lead \%} \times 0.3857$. Gold equivalent (AuEq) is used for illustrative purposes, to express the combined value of Au, Ag, Pb, and Zn as a percentage of Au. Metallurgical Assumed recoveries are 90% for Au, 77% for Ag, 83% for Pb, 90% for Zn, based on recoveries at the Olympias Mine, a deposit of the same type.

100% OWNED

COVE MINE

ADVANCED EXPLORATION

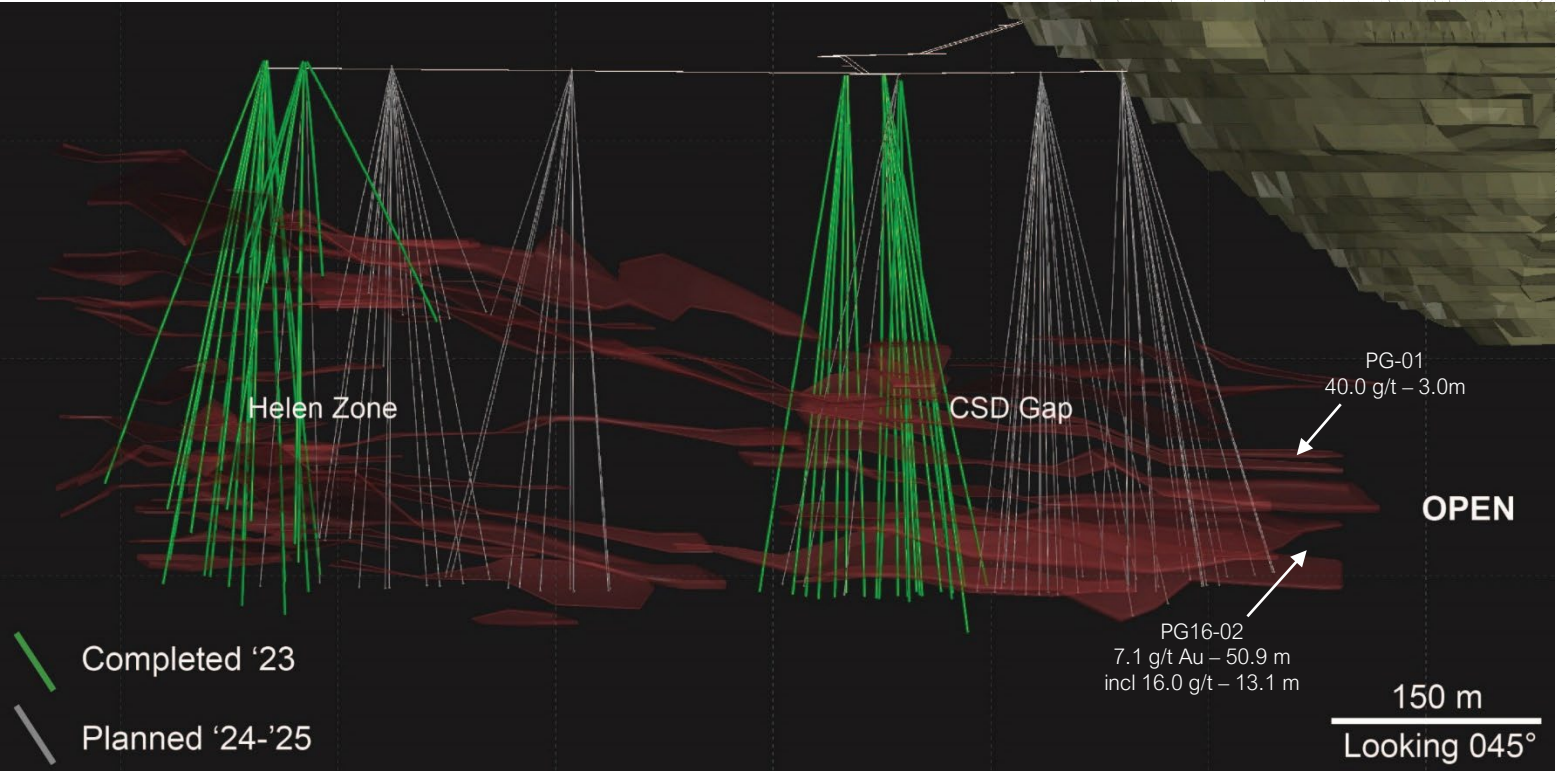


COVE MINE

Advanced Exploration Program

- One of the highest-grade, development stage, gold deposits in North America
- Large-scale underground definition drill program underway
- Positive results from delineation drilling:
 - 10.3 g/t Au over 7.8 m (iCHU23-02)
 - 12.9 g/t Au over 36.1 m (iCHU23-04)
 - 12.8 g/t Au over 14.2 m (iCHU23-05)
 - 13.8 g/t Au over 7.6 m (iCHU23-05)
 - 24.1 g/t Au over 14.0 m (iCHU23-07)
 - 11.4 g/t Au over 7.9 m (iCHU23-08)
 - 9.6 g/t Au over 22.8 m (iCHU23-09)
 - 14.9 g/t Au over 32.7 m (iCHU23-10)
 - 15.7 g/t Au over 22.5 m (iCHU23-11)
 - 18.9 g/t Au over 29.3 m (iCHU23-11)
 - 27.0 g/t Au over 8.0 m (iCHU23-12A)
 - 10.6 g/t Au over 38.8 m (iCHU23-14)
 - 11.1 g/t Au over 20.6 m (iCHU23-14)
 - 12.5 g/t Au over 11.5 m (iCHU23-16)
 - 28.0 g/t Au over 10.4 m (iCHU23-23)
 - 21.0 g/t Au over 10.8 m (iCHU23-23)
 - 25.4 g/t Au over 20.1 m (iCHU23-28)
 - 14.4 g/t Au over 20.2 m (iCHU23-33)
 - 12.7 g/t Au over 24.4 m (iCHU23-34)
 - 14.3 g/t Au over 8.0 m (iCHU23-35)

Mineral Resources ²					
	Tonnage	Au Grade	Ag Grade	Gold	Silver
	(kt)	(g/t)	(g/t)	(koz)	(koz)
Indicated	1,007	10.9	29.1	351	943
Inferred	3,867	10.9	20.6	1,353	2,565



New Results:
(Helen Zone)

iCHU23-37: 14.4 g/t Au over 9.4 m and
22.6 g/t Au over 19.1 m and
55.0 g/t Au over 1.8 m

iCHU23-38: 13.8 g/t Au over 10.1 m and
32.9 g/t Au over 14.9 m

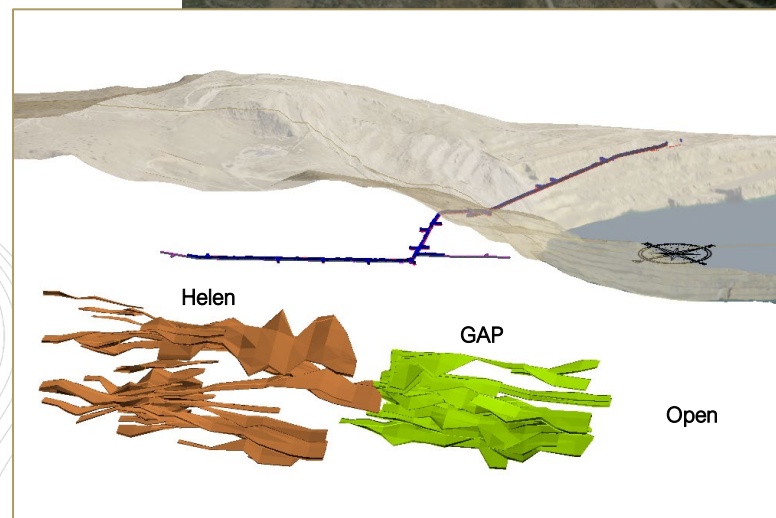
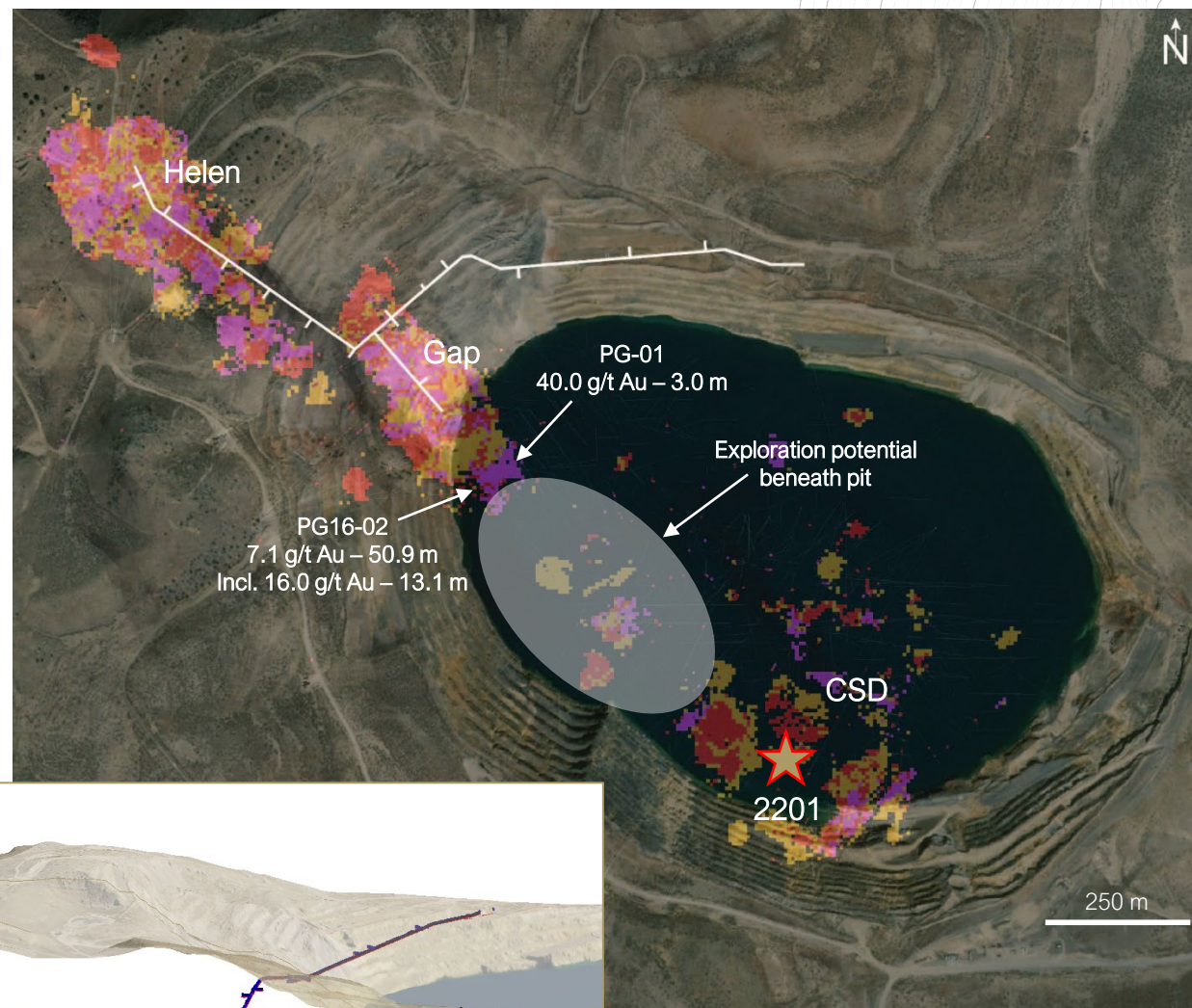
iCHU23-39: 25.3 g/t Au over 9.5 m and
30.5 g/t Au over 2.1 m and
19.7 g/t Au over 2.7 m and
23.5 g/t Au over 12.8 m

1. See Disclaimer for Notes and Forward-Looking Statements
2. See Appendix for i-80 Gold Corp's Mineral Resources. Mineral Resources were calculated at a gold price of US\$1500/oz, cut-off grade 0.141 opt Au, and is based on the Preliminary Economic Assessment issued by i-80 on April 13, 2021

COVE MINE

Phase 1 Program

- The initial phase of underground development is completed
- Feasibility Study will focus on the Helen and Gap Zones – currently being drilled
- Upside opportunities:
 - Gap Zone is open down-plunge
 - CSD and 2201 Zones are not included in PEA or upcoming FS
 - Large-scale property offers significant exploration opportunity



2201 Zone – Highlight Intercepts:

- PG14-02: 182.9 g/t Au – 1.5 m
- PG14-03: 40.2 g/t Au – 4.9 m
- PG14-10: 28.1 g/t Au – 2.6 m
- PG14-10: 32.0 g/t Au – 1.8 m
- PG14-25: 36.3 g/t Au – 2.5 m
- PGAX-51: 54.6 g/t Au – 1.5 m
- PGAX-51: 27.2 g/t Au – 2.5 m

ENVIRONMENT, SUSTAINABILITY, GOVERNANCE

i-80 Gold is committed to sustainable development and environmental stewardship during exploration and extraction of mineral resources. As we continue to grow our team and our operations, we prioritize safety and improving the social, economic, and environmental well being of the communities we operate in.



COMMUNITY & STAKEHOLDER RELATIONS

i-80 Gold is committed to building and maintaining respectful, long-lasting, and collaborative relationships with indigenous groups, host communities, local governments, and institutions surrounding our mining operations.



HEALTH & SAFETY

We believe that there is no greater respect that we can show for each other than concern for our health and safety, both on and off the job. Every person will know that we care because of our actions. i-80 Gold is constantly working to improve our protocols and strengthen our commitment to a positive safety culture.



ENERGY WATER & ENVIRONMENT

i-80 Gold understands the importance that our stakeholders and agricultural neighbors place on water management, conservation and we pledge to be responsible stewards of our environment and resources.



ECONOMIC IMPACT & PROCUREMENT

i-80 Gold's mining operations create economic value in Nevada through job creation, local buying, paying taxes, and investing in the communities we live and work in.



DIVERSITY & INCLUSION

i-80 Gold is comprised of a team of highly talented and diverse individuals. We believe in creating an inclusive culture of respect and equity and strive to attract and retain the brightest minds in the industry.



EDUCATION & WORKFORCE DEVELOPMENT

From highlighting the minerals being produced for our sustainable future to promoting the career opportunities that exist within the industry, i-80 Gold is actively engaged in dispelling industry myths and communicating the importance of modern mining.

SUMMARY



GROWTH

Organic growth platform with a goal of becoming Nevada's 2nd largest gold producer with sustainable development opportunities



EXECUTING OUR STRATEGY

Executing a plan to grow reserves & resources, production, and cash flow



CAPITAL ALLOCATION

Prioritizing reserve increases and mine development

1.866.525.6450

WWW.I80GOLD.COM

Ewan Downie
Chief Executive Officer



Matthew Gili
President & COO



Ryan Snow
Chief Financial Officer



Matthew Gollat
Executive Vice-President



COMPANY SNAPSHOT

Analyst Coverage



cg/Canaccord
Genuity



STIFEL SCP RESOURCE
FINANCE



CAPITAL STRUCTURE¹

Shares Issued and Outstanding	291,886,952
Warrants	24,716,409
Options	11,101,241
RSU's/DSU's	1,020,543
Fully Diluted	328,725,145

*On December 31, 2021, the Company completed a financing package which includes a \$60M convertible loan which bears an interest rate of 8% per annum for four years with a conversion price of CA\$3.275 per share.

* On February 22, 2023, the Company completed second \$65M convertible loan which bears an interest rate of 8% per annum for four years with a conversion price of US\$3.38 per share

1. As at September 30, 2023
2. See Disclaimer for Notes and Forward-Looking Statements

MINERAL RESOURCES

Mineral Resources Attributable to i-80 Gold Corp. upon closing of the Lone Tree and Ruby Hill Arrangements

1. MCOY-COVE: Mineral Resources were calculated at a gold price of US\$1500/oz, cut-off grade 0.141 opt Au. and is based on the Preliminary Economic Assessment issued by i-80 on April 13, 2021. Practical Mining LLC, under the supervision of Dagny Odell, P.E., Laura Symmes, SME, and Robert Raponi, P. Eng., each being Qualified Persons within the meaning National Instrument (NI) 43-101, was the lead consultant for the Project PEA.
2. GRANITE CREEK: Mineral Resources have an effective date of May 4, 2021 and are based on the mineral resource technical report issued by i-80 on October 29, 2021. The Qualified Persons for the estimate are Terre Lane QP-MMSA and Hamid Samari QP-MMSA of GRE. Open Pit Mineral resources are reported at a 0.35 g/t cutoff, an assumed gold price of 1,800 \$/tr. oz, using variable recovery, a slope angle of 41 degrees, 6% royalty, heap leach processing cost \$9.92 per tonne (includes admin), CIL processing cost of \$17.63 per tonne (includes admin). Underground mineral resources are reported at a cut-off grade of 5 gpt based on Mining Cost of \$100/ton, Process Cost of \$106/ton, recovery of 92%, and a gold price of \$1600/t. oz
3. LONE TREE: Mineral Resources were calculated at a gold price of US\$1650/oz, cut-off grade of 0.1 g/t Au and are based on the mineral resource technical report issued by i-80 on October 21, 2021. Mr. Abani Samal, Ph.D., CPG, RM- SME, Fellow SEG a GeoGlobal, LLC Principal is the Qualified Person responsible for the Mineral Resource estimate.
4. RUBY HILL: Mineral Resources were calculated at a gold price of US\$1650/oz, cut-off grade 0.1 g/t Au. and are based on the mineral resource technical report issued by i-80 on October 22, 2021. Mr. Christopher Wright, P. Geo, a Wood Canada Ltd. employee, is the Qualified Person responsible for the Mineral Resource estimate.
5. Figures are rounded and may show apparent errors in subtotals.
6. Mineral resources are not mineral reserves and do not demonstrate economic viability.

MINERAL RESOURCES^{1,2,3,4,5,6}

	Tonnes (kt)	Au Grade (Au g/t)	Ag Grade (Ag g/t)	Au Ounces (Koz)	Ag Ounces (Koz)
Measured					
Granite Creek - Open Pit	20,857	1.47		988	
Granite Creek - Underground	483	10.07		156	
Lone Tree - Open Pit					
McCoy-Cove - Underground					
Ruby Hill - Open Pit					
Ruby Hill - Underground					
Indicated					
Granite Creek - Open Pit	7,448	1.27		304	
Granite Creek - Underground	525	10.70		181	
Lone Tree - Open Pit	7,223	1.77		410	
McCoy-Cove - Underground	1,007	10.90	29.1	351	943
Ruby Hill - Open Pit	224,400	0.54	14.3	3,874	103,335
Ruby Hill - Underground	1,200	5.22	0.6	202	22
Measured & Indicated	263,144	0.76	12.33	6,465	104,300
Inferred					
Granite Creek - Open Pit	1,531	1.26		62	
Granite Creek - Underground	741	13.41		319	
Lone Tree - Open Pit	50,734	1.69		2,764	
McCoy-Cove - Underground	3,867	10.90	20.6	1,353	2,565
Ruby Hill - Open Pit	162,700	0.39	14.0	2,062	73,472
Ruby Hill - Underground	8,210	6.02	1.7	1,588	439
Inferred	227,783	1.11	10.4	8,148	76,476

EXPERIENCED BOARD OF DIRECTORS



RON CLAYTON

Chairman

40+ years exploration, development, construction & mine operation experience

Former President, CEO & Director of 1911 Gold Corp

Former President & CEO Tahoe Resources, SVP Operations Hecla, VP Operations Stillwater



EVA BELLISSIMO

Director

20+ years legal, financing, merger and acquisition & corporate governance experience in the mining industry

Co-leader of McCarthy Tétrault's Global Metals & Mining Group

Lecturer on mining corporate finance



JOHN BEGEMAN

Director

40+ years operational & leadership experience

Director Allied Gold

Director Pan American Silver

Former Executive Chairman Premier Gold

Former Director Yamana Gold Inc.

Former CEO Avion Gold Corp

Former COO Zinifex Canada Inc



JOHN SEAMAN

Director

25 years experience in the public minerals and mining industry

CFO of Premier Gold Mines (2006-2012) and Wolfden Resources Inc. (2002-2007)



GREG SMITH

Director

Chartered Professional Accountant

Current CEO of Equinox Gold

Former CEO JDL Gold and Anthem United, CFO Minefinders Corporation

Former Director of Solaris Resources Inc.



ARTHUR EINAV

Director

General Counsel and Senior Managing Director at Sprott Inc.

Co-head of Enterprise Shared Services Group with specific responsibility for legal, compliance, risk and human resources

Member of the Law Society of Upper Canada and the New York State Bar



CHRISTINA MCCARTHY

Director

15+ experience in the resource capital markets

Former President & CEO of Paycore Minerals

Former Director of Corporate Development McEwen Mining Inc.

Former Vice President of Corporate Development for New Operu Resources Inc.