



i-80

GOLD CORP

**CREATING A NEVADA-FOCUSED,
MID-TIER GOLD PRODUCER**

NYSE AMERICAN: IAUX | TSX: IAU

May 2026

Cautionary Disclaimer Regarding Forward-Looking Statements

Certain statements in this presentation constitute “forward-looking statements” or “forward-looking information” within the meaning of applicable securities laws, including but not limited to management’s assessment of i-80 Gold Corp.’s (“i-80 Gold” or the “Company”) future plans and operations; the anticipated timing of permitting the Lone Tree Plant, including for a construction decision, construction and commissioning; the anticipated benefits of the refurbished processing plant including to cash margins and recoveries; the anticipated cost and payback period of the refurbishment plan; the perceived merit of projects or deposits; the impact, timing, and execution of the Company’s development plan; ability to upgrade mineral resources and expand mineral resource base; anticipated improvement in project economics; the anticipated timing of permitting, production, project development, the completion of the Financing Package comprising part of the recapitalization plan; ability and timing to complete recapitalization plan; completion dates for pre-feasibility/feasibility studies, technical studies, and recapitalization plan; execution and timing of all asset advancements in the Financing Package and the new development plan; that ramp-up activities at Granite Creek will lead to steady state production; the Granite Creek dewatering campaign; the potential to utilize the autoclave infrastructure at the Lone Tree Plant to process mineralized material pending the outcome of the 2025 refurbishment, and benefits resulting from such utilization; that Mineral Point will become the Company’s largest producing asset and is expected to provide the biggest step change in company-wide production; the successful permitting of each project; the ability to further de-risk the development pipeline; the timing, completion and results of the Company’s drill programs; the inclusion of drill results in future feasibility studies; that any of the projects will reach commercial production; and the Company’s ability to achieve mid-tier production status; outlook on gold output; the anticipated growth expenditures; the anticipated timing of permitting, production, project development or technical studies; the timing and completion of the Financing Package, including the royalty sale with Franco-Nevada Corporation and the gold prepayment facility with National Bank of Canada and Macquarie Bank Limited; anticipated transition of prepayment facility into revolver; the Company’s 2026 production, operating and development cost guidance; the anticipated timing for water treatment plant completion at Granite Creek; anticipated commissioning of the Lone Tree Plant by the end of 2027; the expected timing of first gold from upper Archimedes; the anticipated redemption of existing convertible debentures; and the potential sale of a non-core asset constitutes forward looking statements or forward-looking information within the meaning of applicable securities laws.

All statements other than statements of historical fact are forward-looking statements. Often, but not always, forward-looking statements can be identified by the use of words such as “plans”, “expects”, “is expected”, “budget”, “scheduled”, “estimates”, “continues”, “forecasts”, “projects”, “predicts”, “intends”, “anticipates” or “believes”, or variations of, or the negatives of, such words and phrases, or state that certain actions, events or results “may”, “could”, “would”, “should”, “might” or “will” be taken, occur or be achieved. Readers are cautioned that the assumptions used in the preparation of information, although considered reasonable at the time of preparation, may prove to be inaccurate and, as such, reliance should not be placed on forward looking statements.

The Company’s actual results, performance or achievement could differ materially from those expressed in, or implied by, these forward-looking statements and, accordingly, no assurance can be given that any of the events anticipated by the forward-looking statements will transpire or occur, or if any of them do so, what benefits, if any, that the Company will derive therefrom. By their nature, forward looking statements are subject to numerous risks and uncertainties, some of which are beyond the Company’s control, including general economic and industry conditions, volatility of commodity prices, title risks and uncertainties, the ability to access sufficient capital from internal and external sources such as selling assets or obtaining additional capital on terms that may be onerous or highly dilutive. Any potential future capital raise will depend on the capital markets and its financial condition at such time, currency fluctuations, construction and operational risks, licensing and permit requirements, environmental risks, competition from other industry participants, the lack of availability of qualified personnel or management, imprecision of mineral resource, or production estimates. Additional risks include uncertainties related to completion of the Financing Package and satisfaction of customary closing conditions; risks associated with the refurbishment of the Lone Tree Plant, including cost overruns and construction delays; risks related to third-party toll milling arrangements and processing delays; uncertainties regarding water management and groundwater inflows at Granite Creek and other projects; and risks related to the conversion of mineral resources and the results of anticipated updated technical reports. Please see “Risks Factors” in the Form 10-K for the fiscal year ended December 31, 2025 for more information regarding risks pertaining to the Company, which is available on EDGAR at www.sec.gov/edgar and SEDAR+ at www.sedarplus.ca. Readers are encouraged to carefully review these risk factors as well as the Company’s other filings with the U.S. Securities and Exchange Commission and the Canadian Securities Administrators. All forward-looking statements contained in this presentation speak only as of the date of this presentation or as of the dates specified in such statements. The Company disclaims any intention or obligation to update or revise any forward-looking statements, whether as a result of new information, future events or otherwise except as required by applicable law. Additional information relating to i-80 Gold can be found on i-80 Gold’s website at www.i80gold.com, SEDAR+ at www.sedarplus.ca, and on EDGAR at www.sec.gov/edgar.

Cautionary Note to U.S. Investors Concerning Estimates of Resources: This presentation uses the term “inferred resources”. “Inferred resources” have a great amount of uncertainty as to their existence, and great uncertainty as to their economic and legal feasibility. Under Canadian and U.S. rules, estimates of inferred mineral resources may not form the basis of a feasibility study or prefeasibility study, except in rare cases, and may not be converted to mineral reserves. The Company has prepared technical reports for its material properties in accordance with Regulation S-K Subpart 1300 (“S-K 1300”) as well as under National Instrument 43-101 – Standards of Disclosure for Mineral Projects (“NI 43-101”). While the determination of mineral resources under NI 43-101 and S-K 1300 are similar, they are not identical. Readers are cautioned that mineral resources are not economic mineral reserves and that the economic viability of mineral resources that are not mineral reserves has not demonstrated economic viability.

Caution Regarding Mineral Resource Estimates: This presentation uses the terms measured mineral resources, indicated mineral resources, and inferred mineral resources as a relative measure of the level of confidence in the resource estimate. Mineral resource estimates may be materially affected by geology, environmental, permitting, legal, title, socio-political, marketing or other relevant issues. However, other than as disclosed in this presentation, i-80 is not aware of any known environmental, permitting, legal, title, socio-political, marketing or other relevant issues that could materially affect the estimates of mineral resources disclosed herein. It cannot be assumed that all or any part of an inferred mineral resource will ever be upgraded to the category of indicated mineral resource or measured mineral resource. The mineral resource estimates have been classified in accordance with the Canadian Institute of Mining, Metallurgy and Petroleum’s CIM Definition Standards on Mineral Resources and Mineral Reserves adopted in 2019 and incorporated by reference into NI 43-101 as well as under S-K 1300. Readers are cautioned not to assume that further work on the stated resources will lead to mineral reserves that can be mined economically.

No Advertisement or Solicitation and Technical Information: This presentation is not, and under no circumstances is to be construed as, a prospectus, an advertisement or a public offering of securities in Canada, the United States or any other jurisdiction. No securities commission or similar authority in Canada or the United States has reviewed or in any way passed upon this document or the merits of any securities described herein, and any representation to the contrary is an offence. This presentation does not constitute an offer to sell or the solicitation of an offer to buy any securities of i-80 in any jurisdiction.

Unless otherwise indicated, i-80 has prepared the technical information in this presentation (“Technical Information”) based on information contained in the technical reports (collectively the “Technical Reports”) listed below concerning the Ruby Hill project, the Lone Tree project, the Cove project and the Granite Creek project available under i-80’s profile on SEDAR+ at www.sedarplus.ca and on EDGAR at www.sec.gov/edgar as well as on i-80’s website. Each Technical Report was prepared by or under the supervision of a qualified person (a “Qualified Person”) as defined in NI 43-101 and S-K 1300. For readers to fully understand the information in this presentation, they should read the Technical Reports in their entirety, including all qualifications, assumptions and exclusions that related to the information set out in this presentation which qualifies the Technical Information. Readers are advised that mineral resources that are not mineral reserves do not have demonstrated economic viability. The Technical Reports are each intended to be read as a whole, and sections should not be read or relied upon out of context. The Technical Information is subject to the assumptions and qualifications contained in the Technical Reports. All maps and diagrams are for illustrative purposes only and not to scale.

The technical information in this presentation has been prepared under the supervision of, and has been reviewed and approved by of Paul Chawrun, P.Eng., member of the Professional Engineers of Ontario (PEO) and the Company’s Chief Operating Officer, and Tyler Hill, CPG., Vice President Geology for the Company, each of whom are qualified persons within the meaning of NI 43-101 and S-K 1300.

TECHNICAL REPORTS	REPORT DATE
NI 43-101 Preliminary Economic Assessment Technical Report for the Cove Project, Lander County, Nevada S-K1300 Initial Assessment & Technical Report Summary for the Cove Project, Lander County, Nevada	March 31, 2025 March 26, 2025
NI 43-101 Preliminary Economic Assessment Technical Report for the Granite Creek Mine Project, Humboldt County, Nevada, USA S-K1300 Initial Assessment of the Granite Creek Mine, Humboldt County, NV	March 31, 2025 March 26, 2025
NI 43-101 Technical Report on the Mineral Resource Estimates for the Lone Tree Deposit, Nevada S-K 1300 Technical Report Summary on the Mineral Resource Estimates for the Lone Tree Deposit, Nevada	March 31, 2025 March 24, 2025
NI 43-101 Preliminary Economic Assessment Technical Report for the Ruby Hill Project, Eureka Country, Nevada, USA S-K1300 Initial Assessment of the Ruby Hill Project, Eureka County NV	March 31, 2025 March 29, 2025

Comparable Information: The comparable information about other issuers was obtained from public sources and has not been verified by the Company. “Comparable” means information that compares an issuer to other issuers. The information is a summary of certain relevant operational and valuation attributes of certain mining and resource companies and has been included to provide the prospective investor an overview of the performance of what are expected to be comparable issuers. The comparables are considered to be an appropriate basis for comparison with the Company based on their industry, size, operating scale, commodity mix, jurisdiction, capital structure and additional criteria. The comparable issuers face different risks from those applicable to the Company. Readers are cautioned that there are risks inherent in relying on comparables and that past performance is not indicative of future performance and that the performance of the Company may be materially different from the comparable issuers.

Foreign Exchange Assumptions: All amounts discussed herein are denominated in U.S. dollars unless otherwise specified.

The information contained in this presentation reflects our assumptions, opinions, estimates, plans, beliefs and expectations as **May 14, 2026** and is subject to change without notice.

COMPANY OVERVIEW

Building a Mid-Tier Gold Producer

Industry-Leading Pipeline of Gold Projects

- 5 brownfield gold projects with existing infrastructure
- 1 autoclave plant fed by 3 underground projects
- Construction and development underway
- Targeting ~600,000 oz Au/year by the early 2030s⁽¹⁾

All Deposits Open For Expansion

- Well-understood geology and metallurgy
- Fifth largest mineral resource holder in Nevada

Fully-Funded Development Plan⁽¹⁾

- Raised >\$1B in secured and available capital⁽¹⁹⁾

Experienced, Strengthened Leadership & Board

- Proven track record from exploration and financing to development and production
- Deep Nevada mining expertise
- Strengthened board and management

*Nevada Ranked #1 Jurisdiction Globally for Mining Investment Attractiveness**



^ΔNot included in current development plan.

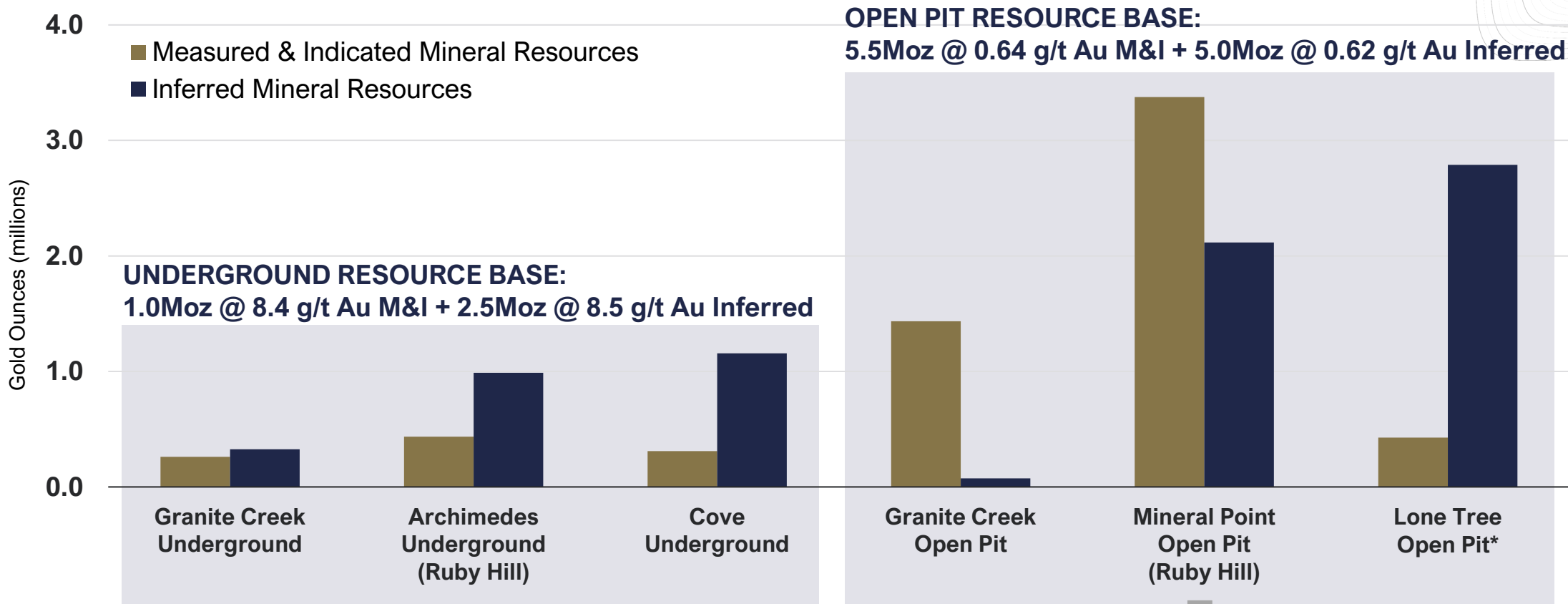
⁽¹⁾(19) See Endnotes 1 and 19 in Appendix

*Source: Fraser Institute Annual Survey of Mining Companies, 2025.

Strong Resource Base With All Deposits Open For Expansion

Completed, ongoing, and planned infill drill programs over the next 24 months aim to convert Inferred mineral resources to the Measured and Indicated category and to expand the total resource base.

TOTAL GOLD MINERAL RESOURCE ESTIMATE: 6.5Moz MEASURED & INDICATED & 7.5Moz INFERRED



*Lone Tree open pit deposit is not included in the current development plan.

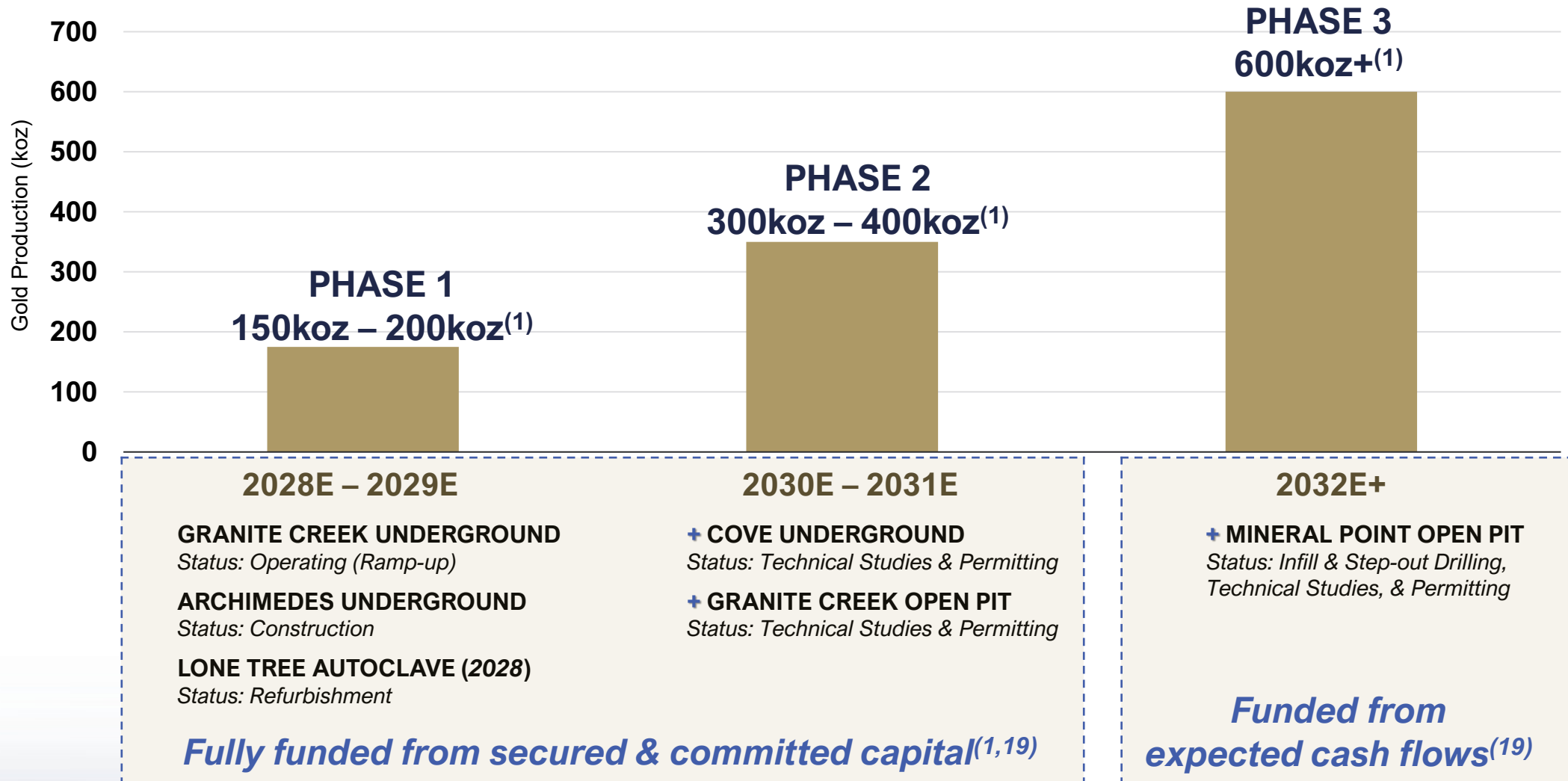
Refer to the related Endnotes and to the Mineral Resources Attributable to i-80 Gold Corp. slide in the Appendix for the notes related to the following mineral resource estimates, such as classification, cutoff grades, reporting standards, and relevant assumptions.

Silver resource at Mineral Point:
104.3Moz M&I @ 15.0 g/t Ag
91.5Moz Inferred @ 14.6 g/t Ag

COMPANY OVERVIEW

Establishing a Scalable Multi-Asset Mid-Tier Gold Producer

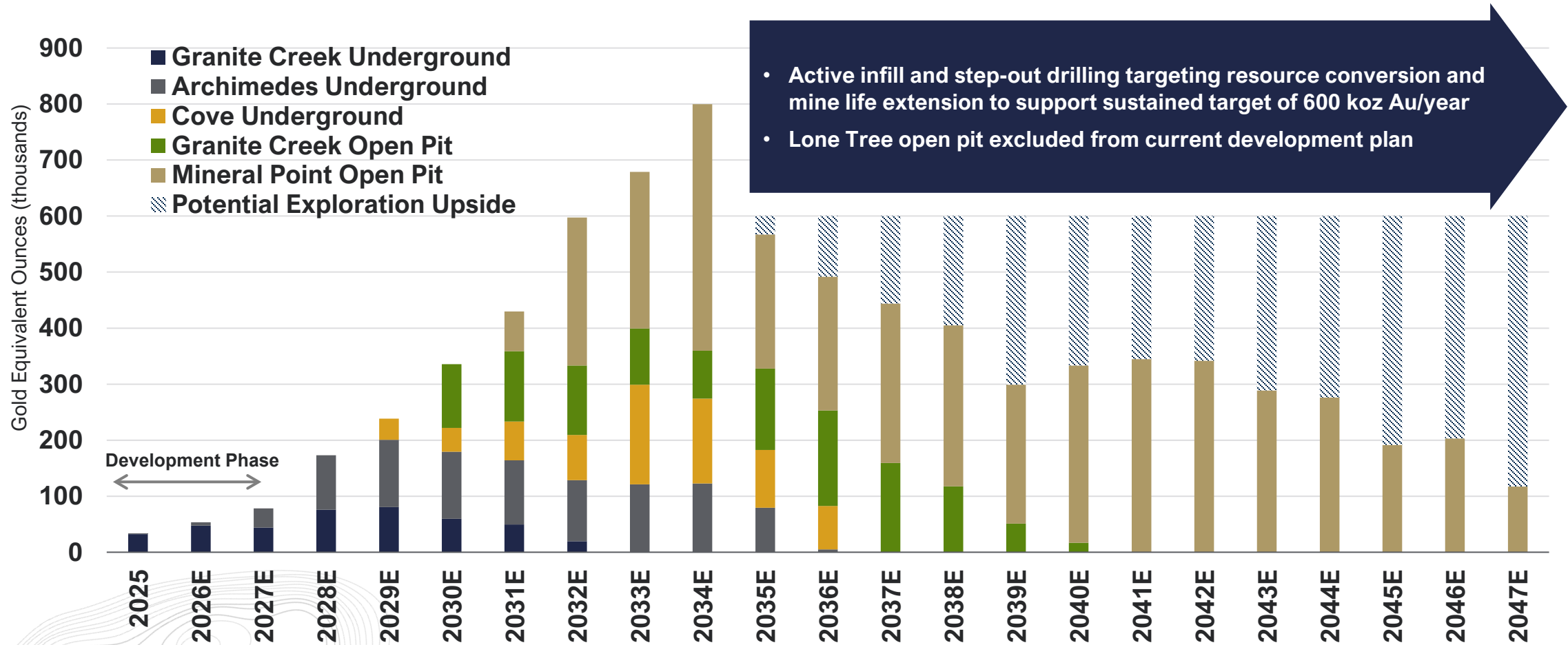
ANTICIPATED AVERAGE ANNUAL GOLD OUTPUT⁽¹⁾



(1)(19) See Endnotes 1 and 19 in Appendix

Multi-Deposit Portfolio With Near-Term Production Growth

ANTICIPATED ANNUAL GOLD OUTPUT⁽¹⁾



See Disclaimer Regarding Forward-Looking Statements & referenced technical reports
 (1) See Endnote 1 in Appendix

COMPANY OVERVIEW

Significant Value Embedded Across i-80 Gold's Asset Portfolio

Undervalued Relative to Net Asset Value and Growth Profile

	Project	After-tax NPV _(5%) ⁽²⁾		IRR		Average Annual Gold Production Target ⁽¹⁾ <i>(following ramp up)</i>	Production Start Year
		\$2,175/oz Au	\$3,000/oz Au	\$2,175/oz Au	\$3,000/oz Au		
Refractory Material	Granite Creek Underground	\$155M	\$373M	-	-	59.6koz	Ramp up phase
	Archimedes Underground	\$127M	\$644M	23%	81%	101.9koz	2026E
	Cove Underground	\$271M	\$626M	30%	54%	100koz	2029E
	TOTAL UNDERGROUND PROJECTS	\$553M	\$1.6B			150koz – 250koz	
Oxide Material	Granite Creek Open Pit	\$421M	\$926M	30%	52%	128.6koz Au	2030E
	Mineral Point Open Pit*	\$614M	\$2,343M	12%	29%	282koz AuEq ⁽³⁾	2031E
	TOTAL OPEN PIT PROJECTS	\$1.0B	\$3.3B			+400koz	
	TOTAL	\$1.6B	\$4.9B				

Ongoing drilling expected to improve PEA economics ahead of feasibility studies, supported by continued infill and step-out programs over LOM

See Disclaimer Regarding Forward-Looking Statements & referenced technical reports

(1)(2)(3) See Endnotes 1,2 and 3 in Appendix

* Mineral Point NPV and IRR at \$3,000/oz Au & \$35.00/oz Ag



COMPANY OVERVIEW

Three Phase Development Plan: Achievable and Advancing

		2025	2026	2027	2028	2029	2030	2031	2032	Latest & Upcoming Economic Studies	
PHASE 1	Refractory	Granite Creek Underground	Toll Milling			PRODUCTION					<input checked="" type="checkbox"/> Q1 2025 – PEA (update from 2021) <input type="checkbox"/> Q2 2026 – Feasibility Study
		Archimedes Underground	CONSTRUCTION	Toll Milling		PRODUCTION					<input checked="" type="checkbox"/> Q1 2025 – PEA <input type="checkbox"/> Q1 2027 – Feasibility Study
		Lone Tree Autoclave Processing Facility	TECHNICAL	REFURBISHMENT		PROCESSING					<input checked="" type="checkbox"/> Q1 2025 – Mineral Resource Estimate <input checked="" type="checkbox"/> Q4 2025 – Refurbishment Study
PHASE 2	Refractory	Cove Underground	PERMITTING & TECHNICAL		CONSTRUCTION	PRODUCTION				<input checked="" type="checkbox"/> Q1 2025 – PEA (update from 2021) <input type="checkbox"/> Q2 2026 – Feasibility Study	
	Oxide	Granite Creek Open Pit	PERMITTING & TECHNICAL		CONSTRUCTION	PRODUCTION				<input checked="" type="checkbox"/> Q1 2025 – PEA (update from 2021) <input type="checkbox"/> Pre-Feasibility/Feasibility Study (timing under review)	
PHASE 3	Oxide	Mineral Point Open Pit	TECHNICAL	PERMITTING & TECHNICAL			CONSTRUCTION	PRODUCTION		<input checked="" type="checkbox"/> Q1 2025 – PEA <input type="checkbox"/> 2027 – Pre-Feasibility Study (timing under review)	

Anticipated timelines illustrated above are subject to the successful refurbishment and commissioning of the Company's Lone Tree Plant.

Recapitalization Plan Completed Q1 2026

Raised >\$1B in Secured & Available Capital⁽¹⁹⁾

- Combination of financing arrangements from Q2 2025 to Q1 2026, completed ahead of mid-2026 target
- Retired ~\$165M of existing debt in March 2026

Recapitalization Initiatives

~\$300M	May 2025 Equity Financings ⁽¹⁹⁾
\$250M	Franco-Nevada Royalty*
~\$288M	3.75% Convertible Senior Notes Due 2031
\$150M	Gold Prepay (National Bank & Macquarie Bank)
\$100M	Secured Gold Prepay* (National Bank & Macquarie Bank) Subject to Drawdown Conditions

~\$1.1B

Cash Balance of ~\$514M (as at March 31, 2026)

*Royalty and Gold Prepay accordion feature are subject to drawdown conditions
(1)(19) See Endnotes 1 and 19 in Appendix

Fully Funded Development Plan

Fully funded through Phase 1 & Phase 2^(1,19)

- 3 underground projects (Granite Creek, Archimedes & Cove)
- Lone Tree Plant refurbishment and restart
- 1 open pit oxide project (Granite Creek)

Annual gold output expected to increase to a target of ~300koz – 400koz Au⁽¹⁾ from <50koz Au currently

Advance Mineral Point infill drilling, engineering, and technical studies to support a PFS and future permitting ahead of Phase 3

Phase 3 – Mineral Point open pit oxide project – expected to be funded by operating cash flow⁽¹⁾

Funds portfolio-wide resource expansion and infill drilling, and provides working capital and balance sheet flexibility

Executing Across The Business & Repositioned For Growth

2024	 New Development Plan	Established a three-phase plan to advance all five gold projects and one processing facility, targeting ~600,000 oz Au in average annual output in the early 2030s ⁽¹⁾
2025	 Completed PEAs For All Five Projects	Filed Preliminary Economic Assessments defining total portfolio NPV _(5%) of \$4.9B at \$3,000/oz Au ⁽²⁾
	 Stabilized Granite Creek Underground Development & Gold Output	Enhanced dewatering infrastructure improving water ingress and main decline advancement
	 Commenced Construction at Archimedes Underground	Initiated development of second planned underground mine
	 Lone Tree Plant Refurbishment Engineering Study	Completed engineering study which confirmed a nameplate capacity of 827,806 tpa, scope of work, and ~\$430M total cost estimate (incl. capital spares and contingency)
2026	 Positive Construction Decision on Lone Tree Plant Refurbishment	Positive construction decision granted by the Board following extensive trade-off studies and engineering study completion
	 Secured >\$1B in Total Funding Under Recapitalization Plan	Transformational financing package of up to ~\$775M and equity financing of ~\$300M (including expected warrant exercise) ⁽⁵⁾ establishing a fully funded development plan
Ongoing	 Added Depth to Key Functions & Board	Strategic hires, promotions, and board appointments across key functions to strengthen execution of the development plan, including 2025 COO appointment

COMPANY OVERVIEW

Near-Term Catalysts

12 - 18 Months

TECHNICAL STUDIES

- ❑ Cove underground (Feasibility) — Q2 2026
- ❑ Granite Creek underground (Feasibility) — Q2 2026
- ❑ Archimedes underground (Feasibility) — Late-Q1 2027
- ❑ Mineral Point open pit (Pre-Feasibility) — 2027 Timing under review
- ❑ Granite Creek open pit (Feasibility) — Timing under review

LONE TREE PLANT

- ❑ Commence demolition — Q2 2026
- ❑ Commence construction — H2 2026

ARCHIMEDES UNDERGROUND

- ❑ Initiate infill drilling of Lower Archimedes — Q2 2026
- ❑ First gold mined from Upper Archimedes — Q4 2026

i-80 Gold: Positioned For a Re-Rating

WHY US

1 Tier-1 Pro-Mining
Jurisdiction

2 One of the Largest
Gold & Silver Resource
Holders in Nevada

3 Organic Growth
to Mid-Tier Status

WHY NOW

1 Fully Funded
Development Plan

2 Execution Plan
Largely on Track

3 Compelling Valuation
Disconnect

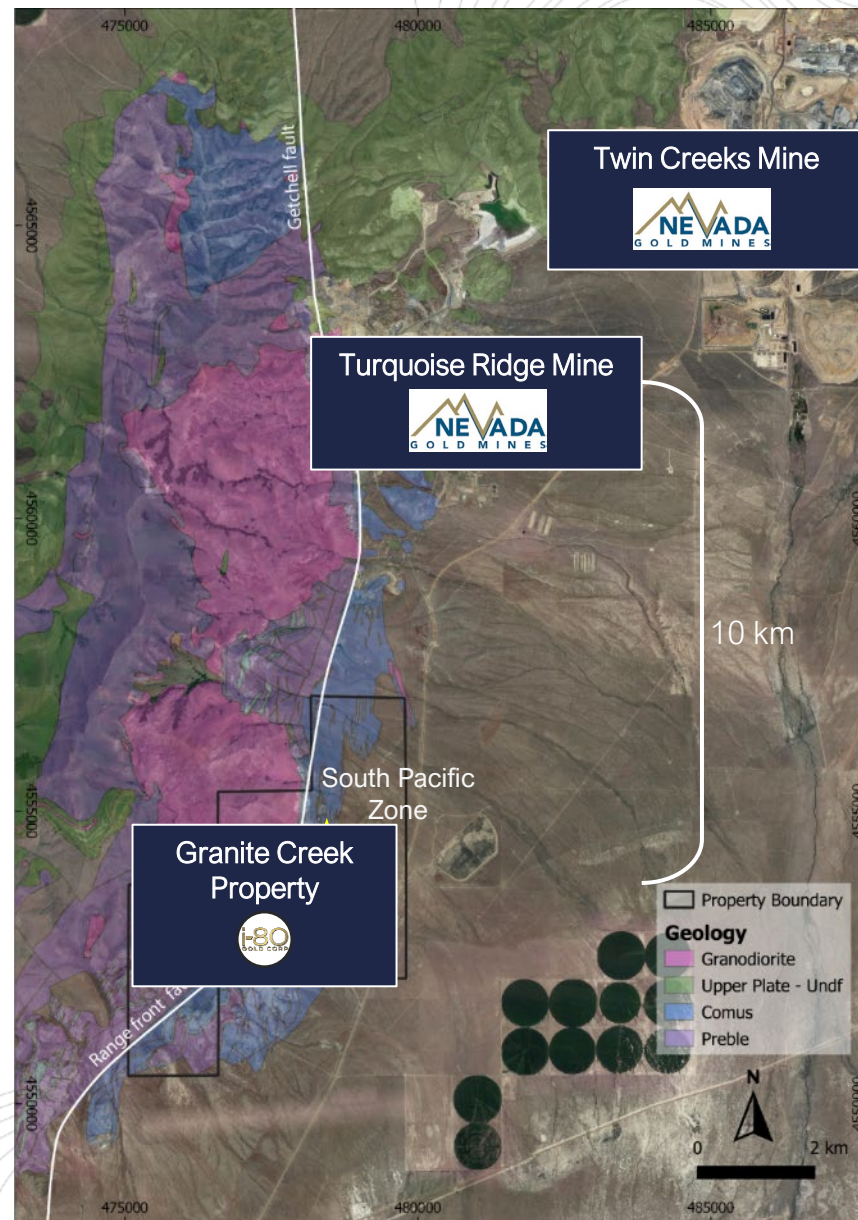
Granite Creek Property

PROJECTS ON THE PROPERTY

- Granite Creek Underground (ramp up phase)
- Granite Creek Open Pit

Located 10 km from Nevada Gold Mines' prolific Turquoise Ridge Complex which currently hosts ~20Moz of gold resources⁽⁹⁾

Situated at the intersection of the highly prolific Battle Mountain-Eureka and Getchell gold trends



GRANITE CREEK UNDERGROUND

Status

Operating (ramp up)

Measured & Indicated Resource⁽¹⁰⁾

261koz @ 10.5 g/t Au

Inferred Resource⁽¹⁰⁾

326koz @ 13.0 g/t Au

PEA HIGHLIGHTS

Mine Life

~8 years

Average Annual Gold Production (following ramp-up)

~60koz @ AISC⁽¹¹⁾ \$1,597/oz

\$2,175/oz Gold Price Assumption

After-Tax NPV_(5%)⁽²⁾

\$155M

After-Tax IRR

–

After-Tax Cash Flow⁽²⁾

\$197M

\$2,900/oz Gold Price

After-Tax NPV_(5%)⁽²⁾

\$344M

After-Tax IRR

–

After-Tax Cash Flow⁽²⁾

\$420M

Next Planned Technical Study

Q2 2026 Feasibility Study

Based on the results of the Preliminary Economic Assessment filed March 31, 2025.
See Disclaimer Regarding Forward-Looking Statements & referenced technical reports.
(2)(10)(11) See Endnotes 2, 10 and 11 in Appendix

GRANITE CREEK UNDERGROUND

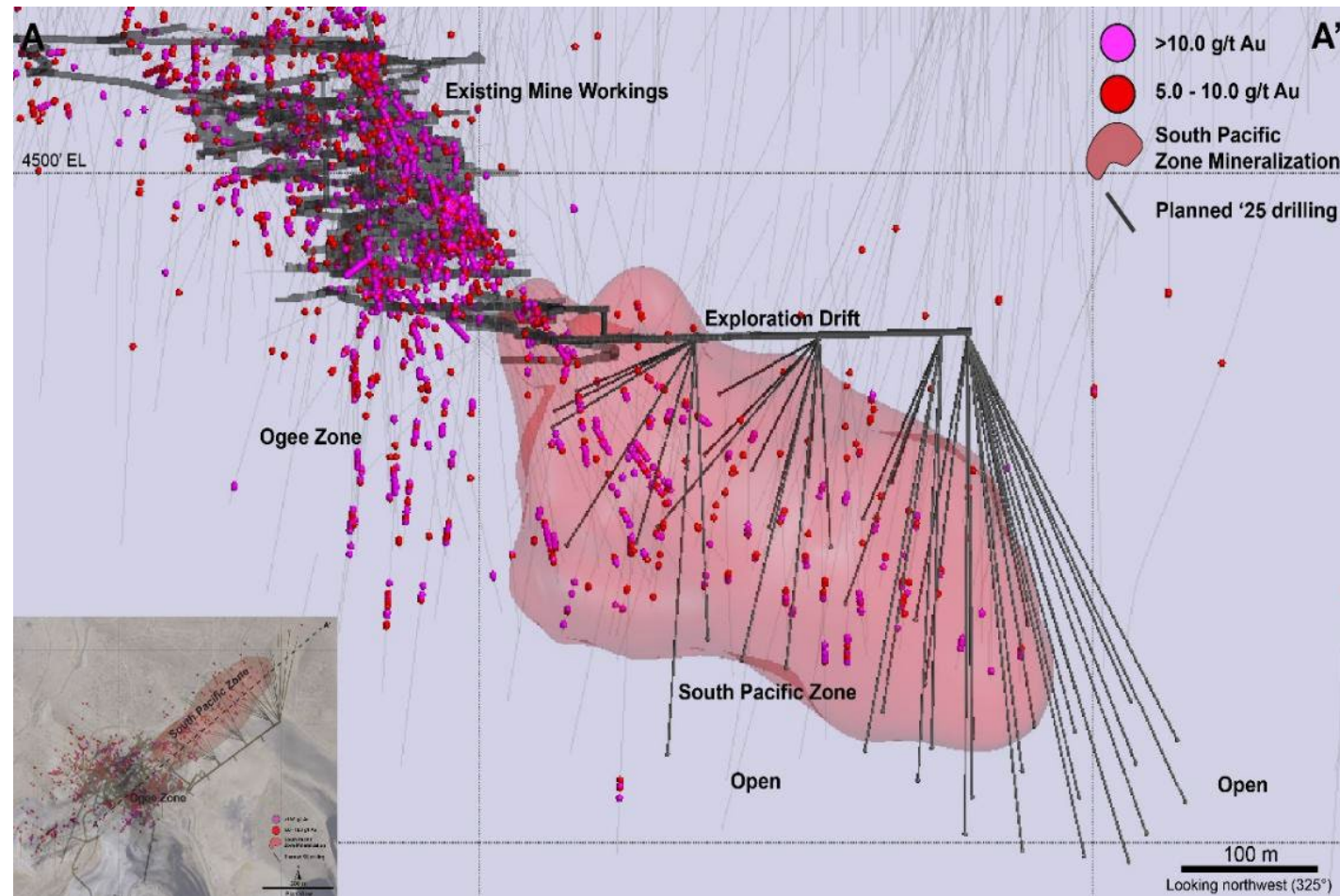
i-80 Gold's First Underground Gold Mine

- Achieved 2025 guidance with 22,977oz Au plus sulfide stockpile of ~6,500 oz of recovered gold*
- Strong resource reconciliation to model on tonnage and grade since ramp-up start in 2023
- Reduced water-related impact on operations; second expanded water treatment plant expected to be operational June 2026
- **Q1 2026 development:** Main decline and access ramp progressed on plan
- Infill and step-out drilling program currently underway

Next Steps

- **2026 Guidance: 30,000 – 40,000 oz Au⁽¹⁾**
- **Q2 2026: Anticipated Feasibility Study Completion**

OGEE & SOUTH PACIFIC ZONES

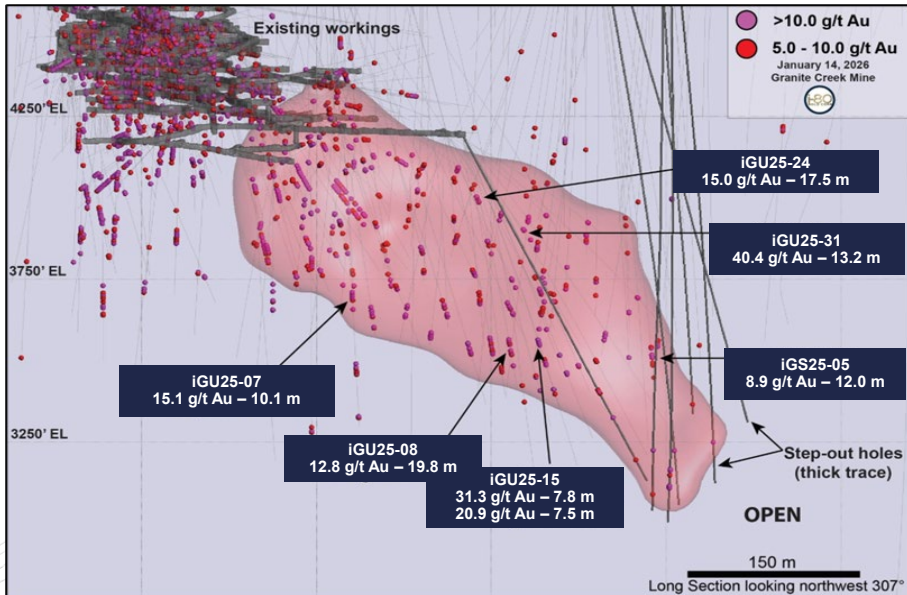
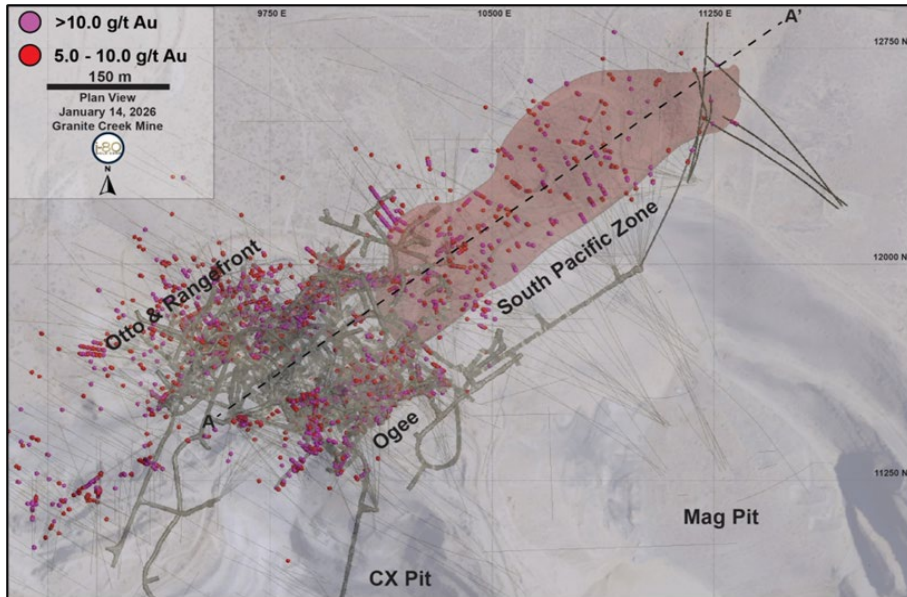


See Disclaimer Regarding Forward-Looking Statements & referenced technical reports

(1) See Endnote 1 in Appendix

*As at December 31, 2025.

South Pacific Zone: Remains Open at Depth and Along Strike



2025 Drill Program Supports Upcoming Feasibility Study

- Determined potential to expand mineralized envelope and support upcoming feasibility study (Q2 2026)
- Drilled ~16,000 meters over 46 holes + 6 additional infill holes to confirm mineralization continuity
- Initial drill spacing of ~140 ft; staged reduction planned to increase geological understanding
- Results continue to show:
 - Robust high-grade mineralization across **the South Pacific Zone**
 - **40.4 g/t Au over 13.2 m**
 - **31.3 g/t Au over 7.8 m**
 - Potential for continued expansion to the north and at depth:
 - Most northerly and deepest hole drilled to date in the South Pacific Zone successfully intersected the primary fault structures as expected
 - **33.6 g/t over 2.9 m & 29.7 g/t over 3.6 m**

2026 Exploration Budget: \$10M

Production & Cash Flow Expected to Rise After Autoclave Restart

KEY OPERATING & FINANCIAL METRICS FROM PEA

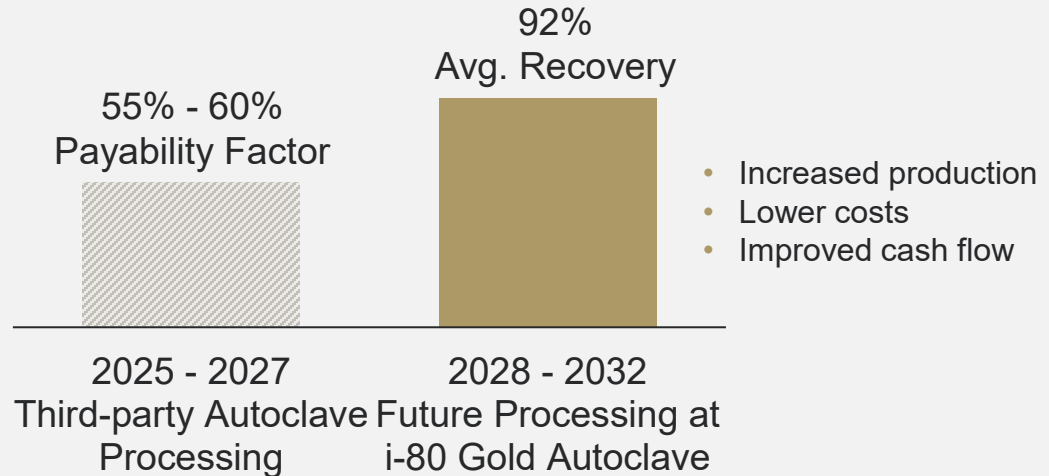
	Life of Mine
\$2,175/oz gold price assumption	
Mine Life	~8 years
Average Annual Gold Production (following production ramp up)	59.6koz
Grade Processed	11.6 g/t Au
Average Gold Recovery	78%
Total Gold Recovered	417.5koz
Cash Cost⁽¹¹⁾ (net of by-product credit)	\$1,366/oz Au
All-in Sustaining Costs⁽¹¹⁾ (net of by-product credit)	\$1,597/oz Au
Definition & Conversion Drilling	\$16.0M
Development & Sustaining Capital	\$88.8M
After-tax NPV_(5%)⁽²⁾	\$155.1M
After-tax IRR	84%
After-tax Cash Flow⁽²⁾	\$196.7M

\$373M AFTER-TAX NPV_{5%}⁽²⁾
AT SPOT GOLD PRICE OF \$3,000/oz

PEA HIGHLIGHTS

- Mineral resource estimate excludes 2023-2025 drilling data
- 2025 impacts of underground water are not reflected in the PEA – dewatering infrastructure upgrades have since been completed and continue to advance

ANTICIPATED CHANGE IN AVERAGE GOLD RECOVERY RATES UPON AUTOCLAVE PLANNED COMMISSIONING⁽⁴⁾



Based on the results of the Preliminary Economic Assessment filed March 31, 2025.
 See Disclaimer Regarding Forward-Looking Statements & referenced technical reports.
 (2)(4)(11) See Endnotes 2, 4 and 11 in Appendix

GRANITE CREEK OPEN PIT

Status

Technical Studies & Permitting

Measured & Indicated Resource⁽¹²⁾

1.4Moz @ 1.18 g/t Au

Inferred Resource⁽¹²⁾

75koz @ 1.09 g/t Au

PEA HIGHLIGHTS

Mine Life

~10 years

Average Annual Gold Equivalent Production (following ramp-up)

~130koz @ AISC⁽¹¹⁾ \$1,225/oz

\$2,175/oz Gold Price Assumption

After-Tax NPV_(5%)⁽²⁾

\$421M

After-Tax IRR⁽²⁾

30%

After-Tax Cash Flow⁽²⁾

\$661M

\$2,900/oz Gold Price

After-Tax NPV_(5%)⁽²⁾

\$866M

After-Tax IRR⁽²⁾

50%

After-Tax Cash Flow⁽²⁾

\$1,267M

Next Planned Technical Study

Timing under review

Based on the results of the Preliminary Economic Assessment filed March 31, 2025.
See Disclaimer Regarding Forward-Looking Statements & referenced technical reports.
(2)(11)(12) See Endnotes 2, 11 and 12 in Appendix

GRANITE CREEK OPEN PIT

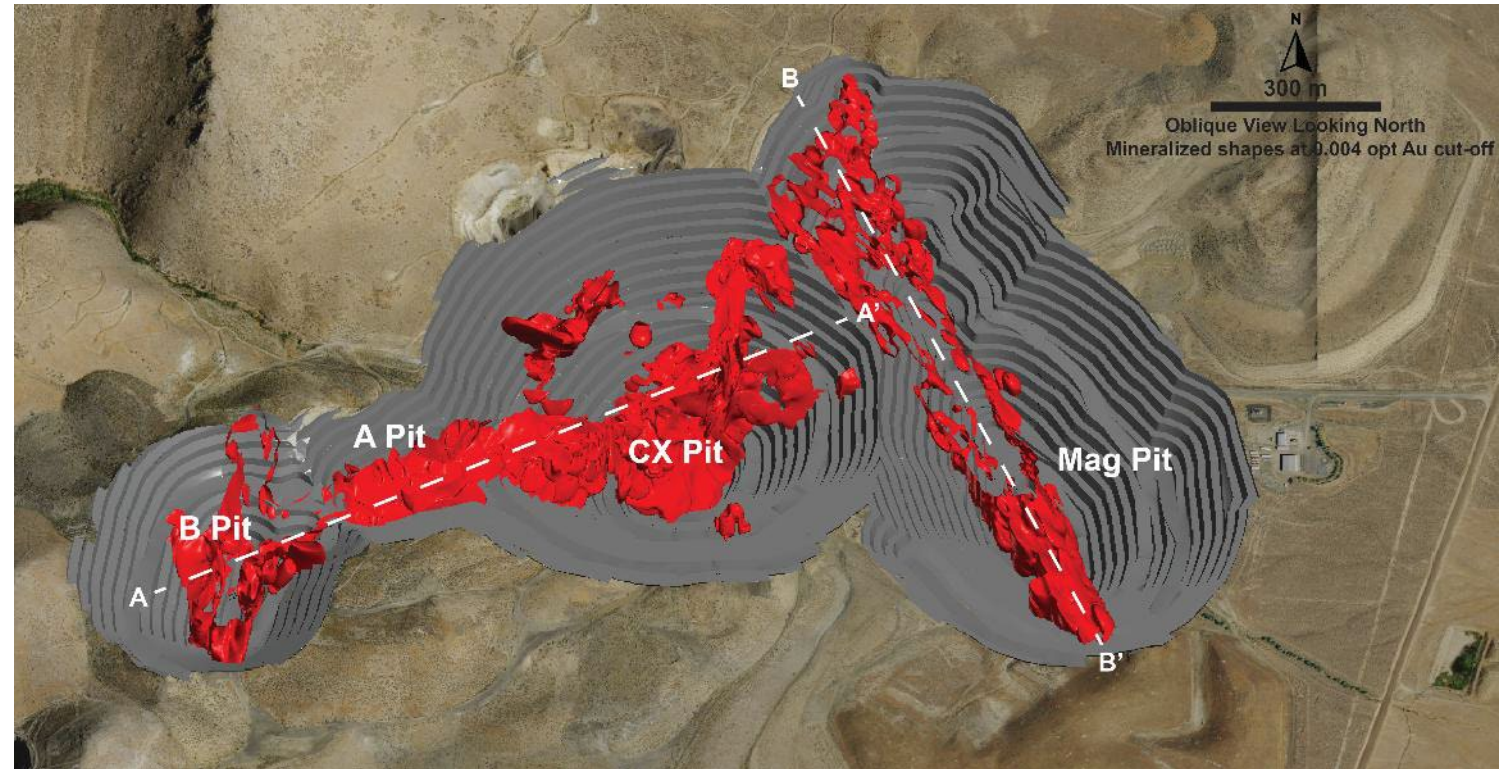
Ongoing Technical Trade Off Analyses to Optimize Economics

- Large high-grade, low-CAPEX open pit project
- Former producing mine with substantial existing infrastructure
- Significant oxide and transitional mineralization remains below and adjacent to historic pits – 95% of resource in M&I category
- Technical work and trade-off analyses underway aimed at optimizing project economics and advance the project towards Pre-Feasibility
- Additional state and federal permits required (including Environmental Impact Statement) with aim to successfully permit within ~3 years – early-stage pre-permitting activities ongoing

Next Steps

- **Pre-Feasibility Study/Feasibility Study: Timeline Under Review**

GRANITE CREEK OPEN PIT LAYOUT



PROPOSED DEVELOPMENT TIMELINE

2025	2026	2027	2028	2029	2030	2031
PERMITTING & TECHNICAL			CONSTRUCTION		PRODUCTION	

GRANITE CREEK OPEN PIT

Open Pit is Significantly Larger Than Previous 2021 Study

KEY OPERATING & FINANCIAL METRICS FROM PEA

\$2,175/oz gold price assumption	Life of Mine
Mine Life	~10 years
Average Annual Gold Production (following production ramp up)	128.6koz
Gold Grade Processed	1.25g/t Au
Average Gold Recovery	86.6%
Total Gold Recovered	1.12Moz
Cash Cost⁽¹¹⁾ (net of by-product credit)	\$1,185/oz Au
All-in Sustaining Costs⁽¹¹⁾ (net of by-product credit)	\$1,225/oz Au
Total Capital	\$274.4M
After-tax NPV_(5%)⁽²⁾	\$421.2M
After-tax IRR⁽²⁾	30%
After-tax Cash Flow⁽²⁾	\$660.9M

**\$926M AFTER-TAX NPV_{5%} AND 52% IRR⁽²⁾
AT \$3,000/oz SPOT GOLD PRICE**

PEA HIGHLIGHTS

- Steady gold prices provided the opportunity to reassess the optimal processing stream
- Envisions 10,000 tonne-per-day carbon-in-leach (CIL) process plant on-site at a rate of ~ 3.5Mtpa during steady state
- PEA confirms a CIL processing facility over heap leaching adds significant value, primarily through higher gold recoveries, compared to conventional heap leach processing and small-scale CIL initially envisioned, reducing recovery risk

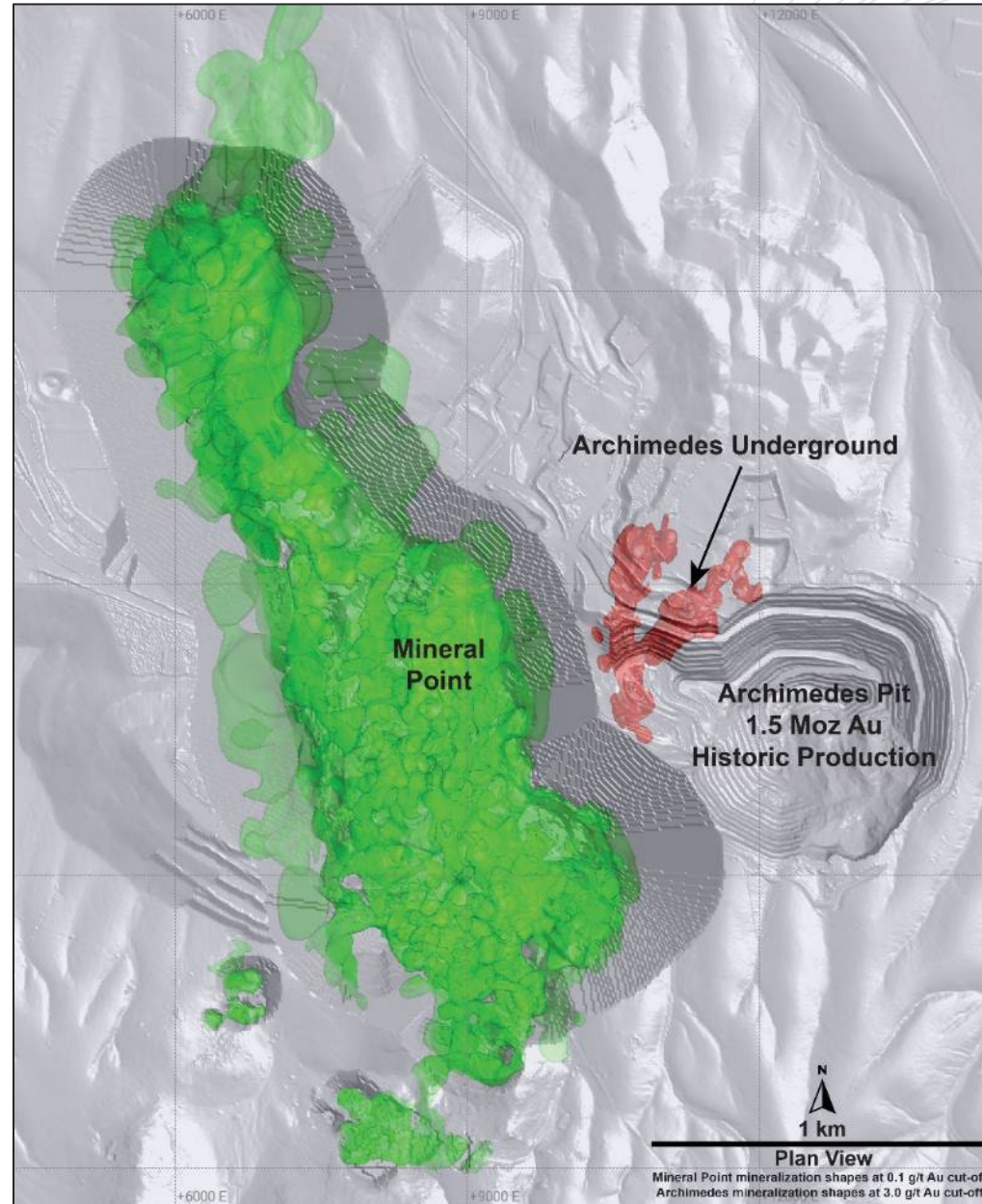
Ruby Hill Property

PROJECTS ON THE PROPERTY

- Archimedes Underground
- Mineral Point Open Pit

Dominant land position in the Eureka Mining District ~250 km to Lone Tree processing facility via road

Host to both gold and base metal mineralization



ARCHIMEDES UNDERGROUND

Status

Construction

Indicated Mineral Resource⁽¹³⁾

436koz @ 7.6 g/t Au

Inferred Resource⁽¹³⁾

988koz @ 7.3 g/t Au

PEA HIGHLIGHTS

Mine Life

~10 years

Average Annual Gold Production (following ramp-up)

~100koz @ AISC⁽¹¹⁾ \$1,893/oz

\$2,175/oz Gold Price Assumption

After-Tax NPV_(5%)⁽²⁾

\$127M

After-Tax IRR⁽²⁾

23%

After-Tax Cash Flow⁽²⁾

\$212M

\$2,900/oz Gold Price

After-Tax NPV_(5%)⁽²⁾

\$581M

After-Tax IRR⁽²⁾

75%

After-Tax Cash Flow⁽²⁾

\$902M

Next Planned Technical Study

Late-Q1 2027 Feasibility Study

Based on the results of the Preliminary Economic Assessment filed March 31, 2025.
See Disclaimer Regarding Forward-Looking Statements & referenced technical reports.
(2)(11)(13) See Endnotes 2, 11 and 13 in Appendix

ARCHIMEDES UNDERGROUND

i-80's Second Planned Underground Mine

Development Advancing on Schedule

- Reached ~660 meters or 2,165 feet (>20 feet per day) ahead of PEA rates
- Q2 2026 priorities:** Continue advancing exploration drift, mobilize underground drilling fleet for Lower Archimedes, and complete key infrastructure projects
- Permitted for Upper Archimedes above 5100'-level; finalizing approvals for Lower Archimedes

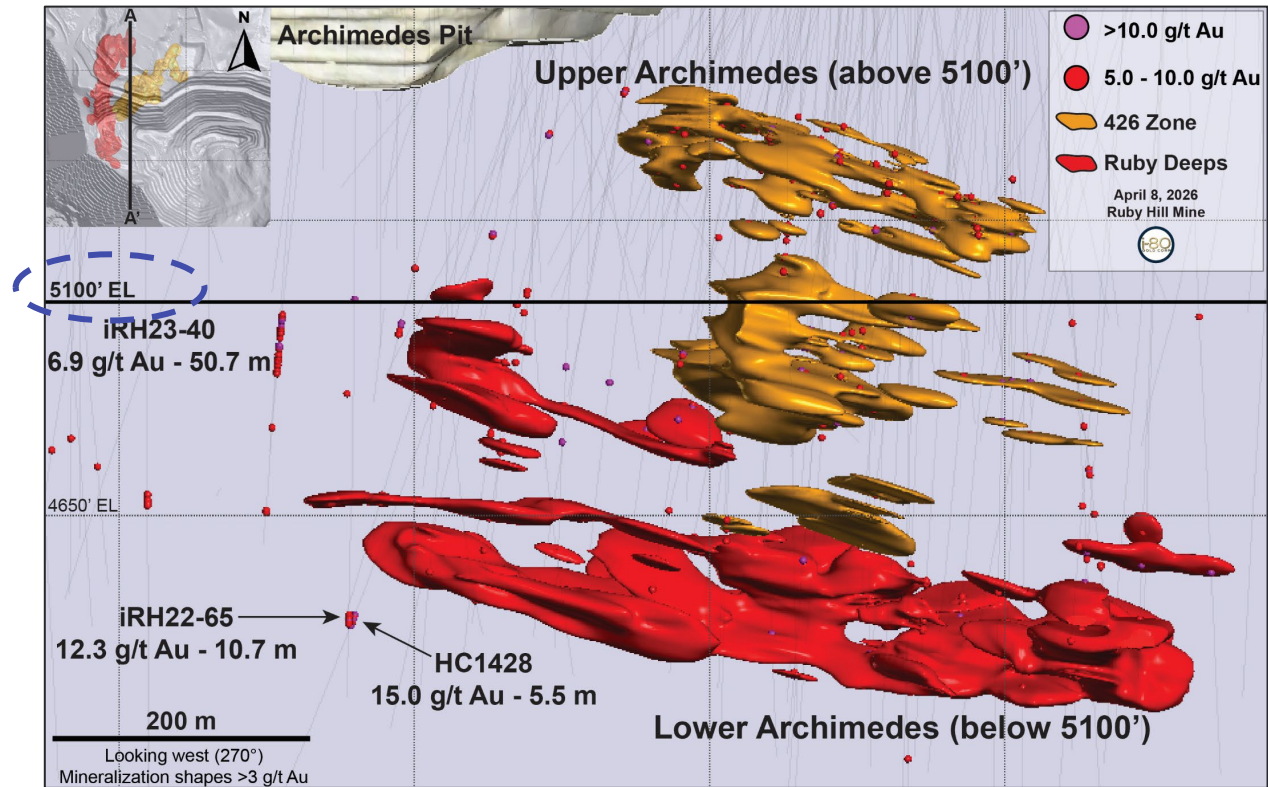
Active Infill Drill Program to Support Feasibility Study

- Total program includes >175 holes over ~60,000 meters planned
- Focused on enhancing mine plan confidence, defining oxide-sulfide transition, confirming continuity, and upgrading Inferred resources to M&I categories

Next Steps

- Q2 2026: Infill Drilling of Lower Zone**
- Q4 2026: First Gold From Upper Zone**
- Late-Q1 2027: Anticipated Feasibility Study Completion** (pending potential expansion of current drill program)

LONGITUDINAL SECTION OF MINERALIZED BODIES

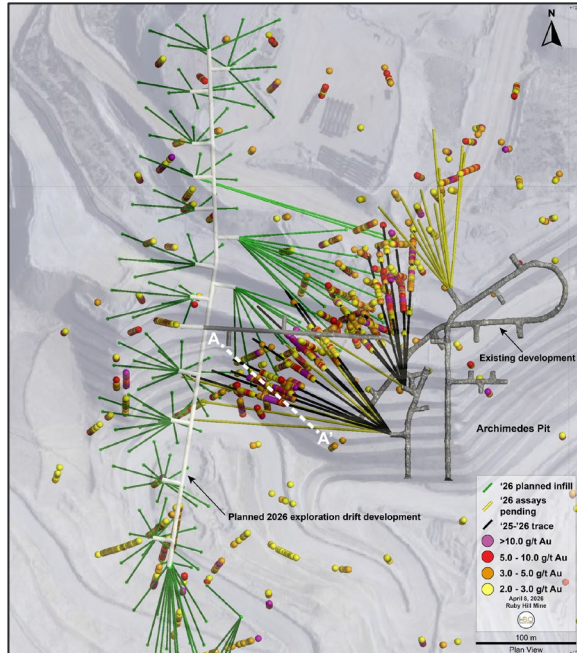


PROPOSED DEVELOPMENT TIMELINE

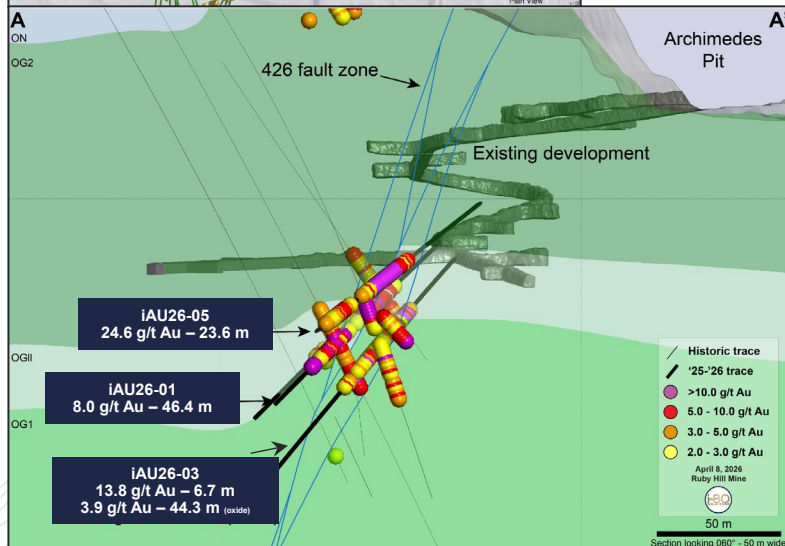


Upper Archimedes Delivers High-Grade Infill Results

Plan View of Archimedes Underground



Upper Archimedes Cross-Section



Upper Archimedes Drilling Complete

- >7,500 meters drilled over 35 holes to better define 426 Zone
- Recent assay results returned high-grade intercepts in targeted drill areas consistent with the current geological model
- Results also demonstrate continuity, scale and the potential to extend mineralization beyond boundaries defined by the 2025 PEA mineral resource estimate
- *Potential Oxide Upside*: Intersected substantial oxide mineralization not included in the 2025 PEA; Metallurgical testwork underway to evaluate potential mine plan integration

Highlights

- **24.6 g/t Au over 23.6 m in hole iAU26-05 (sulfide)**
- **10.2 g/t Au over 36.4 m in hole iAU25-09 (sulfide)**
- **8.0 g/t Au over 46.4 m in hole iAU26-01 (sulfide-oxide)**
- **6.1 g/t Au over 42.1 m in hole iAU25-14 (oxide)**
- **3.9 g/t Au over 44.3 m in hole iAU26-03 (oxide)**

Lower Archimedes Drilling Commenced Q2 2026

- Targeting ~55,000 meters over 140 holes

ARCHIMEDES UNDERGROUND

High-Tonne Low-Cost Operation

KEY OPERATING & FINANCIAL METRICS FROM PEA

	Life of Mine
\$2,175/oz gold price assumption	
Mine Life	~10 years
Average Annual Production (following production ramp-up)	101.9koz
Grade Processed	7.0 g/t Au
Average Gold Recovery	90%
Total Gold Recovered	928koz
Cash Cost⁽¹¹⁾	\$1,769/oz Au
All-in Sustaining Costs^{(11)*}	\$1,893/oz Au
Mine Construction Capital	\$49M
After-tax NPV_(5%)⁽²⁾	\$127M
After-tax IRR⁽²⁾	23%
After-tax Cash Flow⁽²⁾	\$212M

**\$644M AFTER-TAX NPV_{5%} AND 81% IRR
AT \$3,000/oz SPOT GOLD PRICE**

PEA HIGHLIGHTS

- Potential to achieve the highest underground mining rate among i-80 Gold's underground operations
- Mineralized body supports bulk mining method, driving lower unit costs and enhancing project economics
- Several exploration targets to be followed up in the coming years to potentially extend the mine life

Based on the results of the Preliminary Economic Assessment filed March 31, 2025.

See Disclaimer Regarding Forward-Looking Statements & referenced technical reports

*Over-the-road toll-milling trucking costs are treated as non-cash items in the cash flow model and increase AISC by ~\$100/oz at Ruby Hill and ~\$75/oz at Cove.

(2)(11) See Endnotes 2 and 11 in Appendix

MINERAL POINT OPEN PIT

Status

Exploration & Permitting

Indicated Mineral Resource⁽¹⁴⁾

3.4Moz @ 0.48 g/t Au

104.3Moz @ 15.0 g/t Ag

Inferred Resource⁽¹⁴⁾

2.1Moz @ 0.34 g/t Au

91.5Moz @ 14.6 g/t Ag

Based on the results of the Preliminary Economic Assessment filed March 31, 2025.
See Disclaimer Regarding Forward-Looking Statements & referenced technical reports.
(2)/(11)/(14) See Endnotes 2, 11 and 14 in Appendix

PEA HIGHLIGHTS

Mine Life

~17 years

Average Annual Gold Equivalent Production (following ramp-up)

~280koz @ AISC⁽¹¹⁾ \$1,400/oz

\$2,175/oz Gold and \$27.25/oz Silver Price Assumptions

After-Tax NPV_(5%)⁽²⁾

\$614M

After-Tax IRR⁽²⁾

12%

After-Tax Cash Flow⁽²⁾

\$1,470M

\$2,900/oz Gold and \$32.75/oz Silver

After-Tax NPV_(5%)⁽²⁾

\$2,092M

After-Tax IRR⁽²⁾

27%

After-Tax Cash Flow⁽²⁾

\$3,665M

Next Planned Technical Study

**2027 Pre-Feasibility Study
(timing under review)**

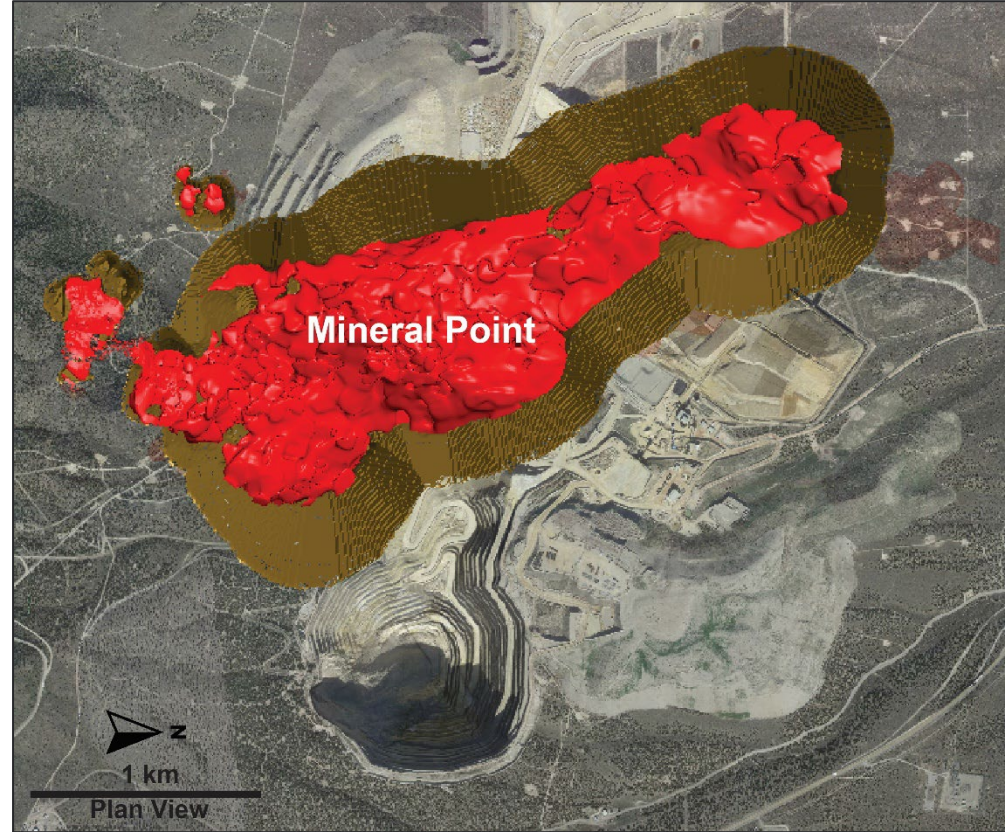
MINERAL POINT OPEN PIT

Potential to Become i-80's Largest Producing Asset

- Large oxide Au-Ag deposit – largest of two oxide projects in i-80 Gold's portfolio
- Potential to become one of Nevada's largest open-pit truck-and-shovel mining operations and a key driver of future growth for i-80
- \$50M of committed Franco-Nevada royalty to be allocated to advance project in 2026⁽¹⁸⁾
- Ongoing engineering work to support permitting considerations include large scale open pit mine with dewatering requirements and on-site heap leach
- **Substantial drilling campaign underway:**
~131,000 meters of drilling planned in 2026 to infill currently classified inferred resources to indicated status to support PFS

Next Steps

- **2026: \$40M - \$45M exploration budget + \$5M for permitting and technical work⁽¹⁸⁾**
- **2027: Anticipated Pre-Feasibility Completion**
(timeline under review)



PROPOSED DEVELOPMENT TIMELINE

2025	2026	2027	2028	2029	2030	2031
TECHNICAL	PERMITTING & TECHNICAL			CONSTRUCTION		PRODU- CTION

(18) See Endnote 18 in Appendix

Mineral Point

KEY OPERATING & FINANCIAL METRICS FROM PEA

\$2,175/oz Au price assumption;
\$27.25/oz Ag price assumption

	Life of Mine
Mine Life	16.5 years
Average Annual Gold Equivalent Production (following production ramp-up)	282koz
Gold Grade Processed	0.39 g/t Au
Silver Grade Processed	15.37 g/t Ag
Strip Ratio (excl. pre-strip)	2.9:1
Average Gold Recovery	78%
Average Silver Recovery	41%
Cash Cost⁽¹¹⁾	\$1,270/oz Au
All-in Sustaining Costs⁽¹¹⁾	\$1,400/oz Au
Mine Construction Capital	\$708M
After-tax NPV_(5%)⁽²⁾	\$614M
After-tax IRR⁽²⁾	12%
After-tax Cash Flow⁽²⁾	\$1,470M

**\$2.3B AFTER-TAX NPV_{5%} AND 29% IRR
AT GOLD & SILVER SPOT PRICES OF
\$3,000/oz & \$35.00/oz**

PEA HIGHLIGHTS

- Existing understanding of geology, hydrology and metallurgy substantially reduces execution risks

GOLD PRICE SENSITIVITY AFTER-TAX NPV ANALYSIS (*millions*)

		Gold Price (\$/oz)											
		\$2,000		\$2,175		\$2,500		\$2,750		\$2,900		\$3,000	
Silver Price (\$/oz)		NPV _{5%}	IRR	NPV _{5%}	IRR	NPV _{5%}	IRR	NPV _{5%}	IRR	NPV _{5%}	IRR	NPV _{5%}	IRR
	\$25.00	\$218	8%	\$540	11%	\$1,126	18%	\$1,573	22%	\$1,840	25%	\$2,017	26%
	\$27.25	\$294	8%	\$614	12%	\$1,199	18%	\$1,647	23%	\$1,913	25%	\$2,091	27%
	\$30.00	\$387	10%	\$705	13%	\$1,286	19%	\$1,737	24%	\$2,001	26%	\$2,181	28%
	\$32.75	\$479	11%	\$795	14%	\$1,377	20%	\$1,826	24%	\$2,092	27%	\$2,270	28%
	\$35.00	\$554	11%	\$869	15%	\$1,450	21%	\$1,899	25%	\$2,164	27%	\$2,343	29%

Note: Project after-tax NPV at an 8% discount is \$296 million at metal prices of \$2,175/oz Au and \$27.25/oz Ag.

COVE UNDERGROUND

Status

Technical Studies & Permitting

Indicated Gold Resource⁽¹⁵⁾

310koz @ 8.2 g/t Au

Inferred Resource⁽¹⁵⁾

1.16Moz @ 8.9 g/t Au

Based on the results of the Preliminary Economic Assessment filed March 31, 2025.
See Disclaimer Regarding Forward-Looking Statements & referenced technical reports.
(2)(11)(15) See Endnotes 2, 11 and 15 in Appendix

PEA HIGHLIGHTS

Mine Life

~8 years

Average Annual Gold Production (following ramp-up)

~100koz @ AISC⁽¹¹⁾ \$1,303/oz

\$2,175/oz Gold Price Assumption

After-Tax NPV_(5%)⁽²⁾

\$271M

After-Tax IRR⁽²⁾

30%

After-Tax Cash Flow⁽²⁾

\$397M

\$2,900/oz Gold Price

After-Tax NPV_(5%)⁽²⁾

\$582M

After-Tax IRR⁽²⁾

52%

After-Tax Cash Flow⁽²⁾

\$793M

Next Planned Technical Study

Q2 2026 Feasibility Study

COVE UNDERGROUND

i-80's Third Planned Underground Gold Mine

- High-grade brownfield gold deposits open for expansion down-plunge
- Located immediately south of Nevada Gold Mines' Phoenix Cu-Au Mine; ~85 km to Lone Tree autoclave
- Ongoing work is focused on:
 - revising the mine plan, sequence optimization, and cut-off grades using updated gold price assumptions
 - evaluating capital cost reduction opportunities related to dewatering program in PEA
- NEPA activities and permit submittals underway with the BLM in anticipation of an EIS; expected 3-year completion time from effective date of the technical report

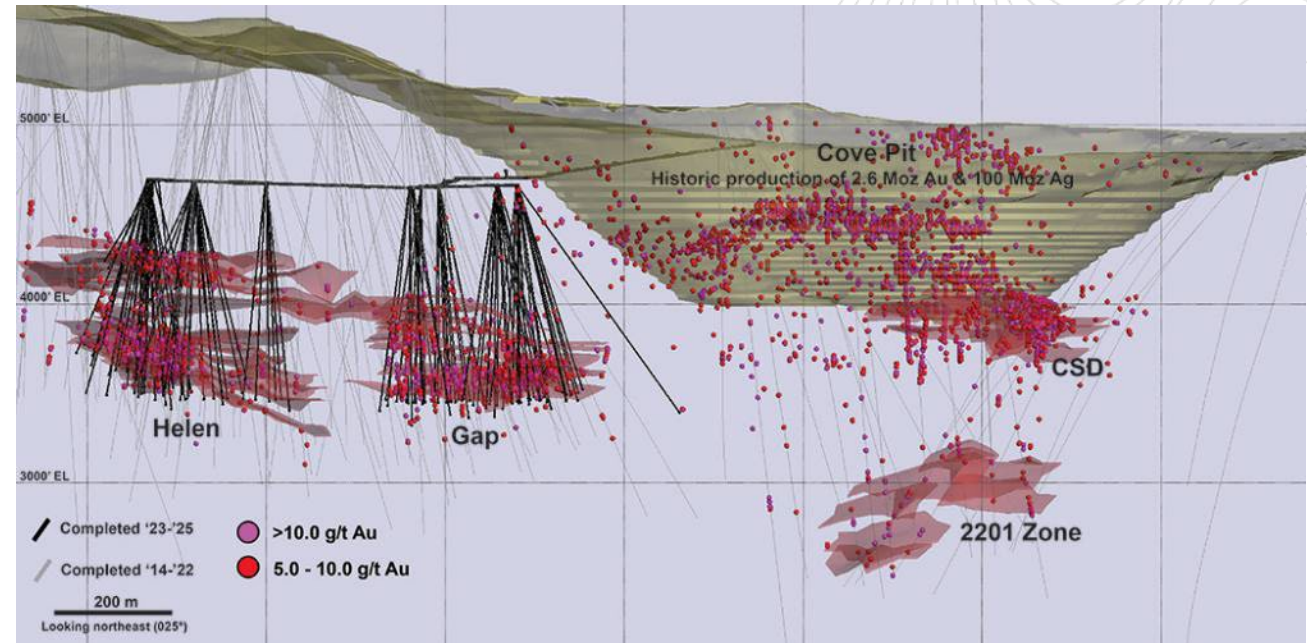
Infill Drill Program

- 2025: ~41,000 meters of infill drilling completed on 30-meter spacing across the Gap and Helen zones are encouraging and consistent with Carlin-style deposits meaning generally high conversion resources to reserves

Next Steps

- Q2 2026: Anticipated Feasibility Study Completion

CURRENT MINE PLAN INCLUDES HELEN & GAP DEPOSITS



PROPOSED DEVELOPMENT TIMELINE

2025	2026	2027	2028	2029	2030	2031
PERMITTING & TECHNICAL			CONSTRUCTION	PRODUCTION		

Recent Two-Year Infill Drill Program Not Included in 2025 PEA

KEY OPERATING & FINANCIAL METRICS

	Life of Mine
\$2,175/oz gold price assumption	
Mine Life	~8 years
Average Annual Production (following production ramp-up)	~100koz
Grade Processed	10.4 g/t Au
Average Gold Recovery	83%
Total Gold Recovered	740koz
Cash Cost⁽⁸⁾	\$1,194/oz Au
All-in Sustaining Costs^{**}(8)	\$1,303/oz Au
Mine Construction Capital	\$157M
After-tax NPV_(5%)⁽¹⁾	\$271M
After-tax IRR	30%
After-tax Cash Flow⁽¹⁾	\$397M

**\$626M⁽¹⁾ AFTER-TAX NPV_{5%} AND 54% IRR
AT \$3,000/oz SPOT GOLD PRICE**

PEA HIGHLIGHTS

- Low capital, high return on estimated invested capital
- Several underground exploration targets to be followed up in the coming years aiming to extend the current mine life
- Two process streams: ~60% of material mined is anticipated to be processed at i-80 Gold's Lone Tree autoclave facility*; remainder to be processed at a third-party roasting facility with established contract
- Increased understanding of dewatering needs through hydrological studies – ~60% of CAPEX is for dewatering needs
- Currently evaluating capital cost reduction opportunities for dewatering program

Based on the results of the Preliminary Economic Assessment filed March 31, 2025.

See Disclaimer Regarding Forward-Looking Statements & referenced technical reports.

*Over-the-road toll-milling trucking costs are treated as non-cash items in the cash flow model and increase AISC by ~\$100/oz at Ruby Hill and ~\$75/oz at Cove.

(1)(8) See Endnotes 1 and 8 in Appendix

Refurbishment on Plan for Late-2027 First Gold Pour Target

- Refurbishment and recommissioning unlocks significant value
- Eliminates reliance on costly third-party toll milling
- Shift from toll milling underground material to owner-operated processing expected to increase payability on refractory material from 55% - 60% up to ~92% recovery
- Autoclave refurbishment engineering study completed Q4 2025
- Existing processing facility permitted; additional permits and renewals required in the normal course for processing and environmental controls in the refurbishment plan
- Targeting ~50% capital commitment by mid-2026



Next Steps

- **Q2 2026: Commence Demolition**
- **H2 2026: Commence Construction**
- **Late-2027: First Gold Pour Target**

PROPOSED DEVELOPMENT TIMELINE

2025	2026	2027	2028	2029	2030	2031
TECHNICAL	REFURBISHMENT ⁽⁴⁾		PROCESSING ⁽⁴⁾			

See Disclaimer Regarding Forward-Looking Statements & referenced technical reports
 (4) See Endnote 4 in Appendix

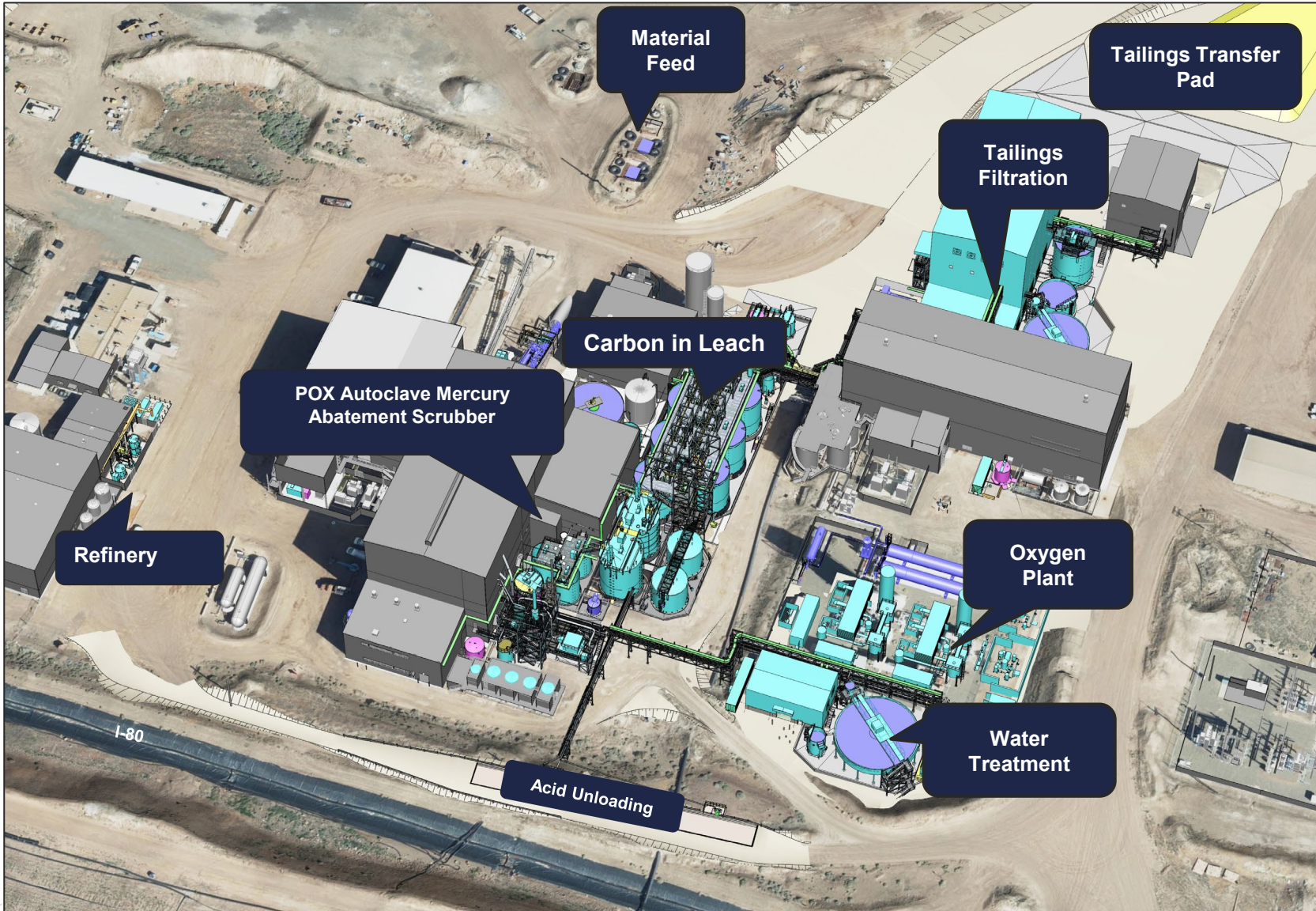
New Plant Design Supports a Manageable, Low-Risk Build

Engineering Study Complete	
~\$13M	Invested three years of engineering work for the study through its evolving phases
30%	Detailed engineering complete resulting in a high level of technical definition and improved accuracy of capital cost estimate
~400	Construction personnel at peak workforce suggests a relatively low overall construction intensity
~600k	Estimated direct construction hours versus greenfield mining projects with 1M+ construction hours

Plant Capacity	
Design Throughput	~2,268 tpd
Plant Availability	85%
Annual Throughput	~827,800 tpa
Processing Circuit Refractory Material	Integrated POX → CIL
Processing Circuit Oxide Material	Grind → CIL (POX bypass)
Processing Flexibility	Potential 5% -10% throughput upside above nameplate for oxide material via POX bypass

Low Execution Risk	
<ul style="list-style-type: none"> • Technically straightforward upgrades for operating efficiency • Limited long-lead equipment time • Experienced team with track record at autoclave facilities at some of Nevada’s largest gold mines 	

Scope of Work



Refurbishment Upgrades are Expected to:

- improve process efficiency and operating flexibility
- potentially increase gold recoveries
- meet new environmental compliance standards

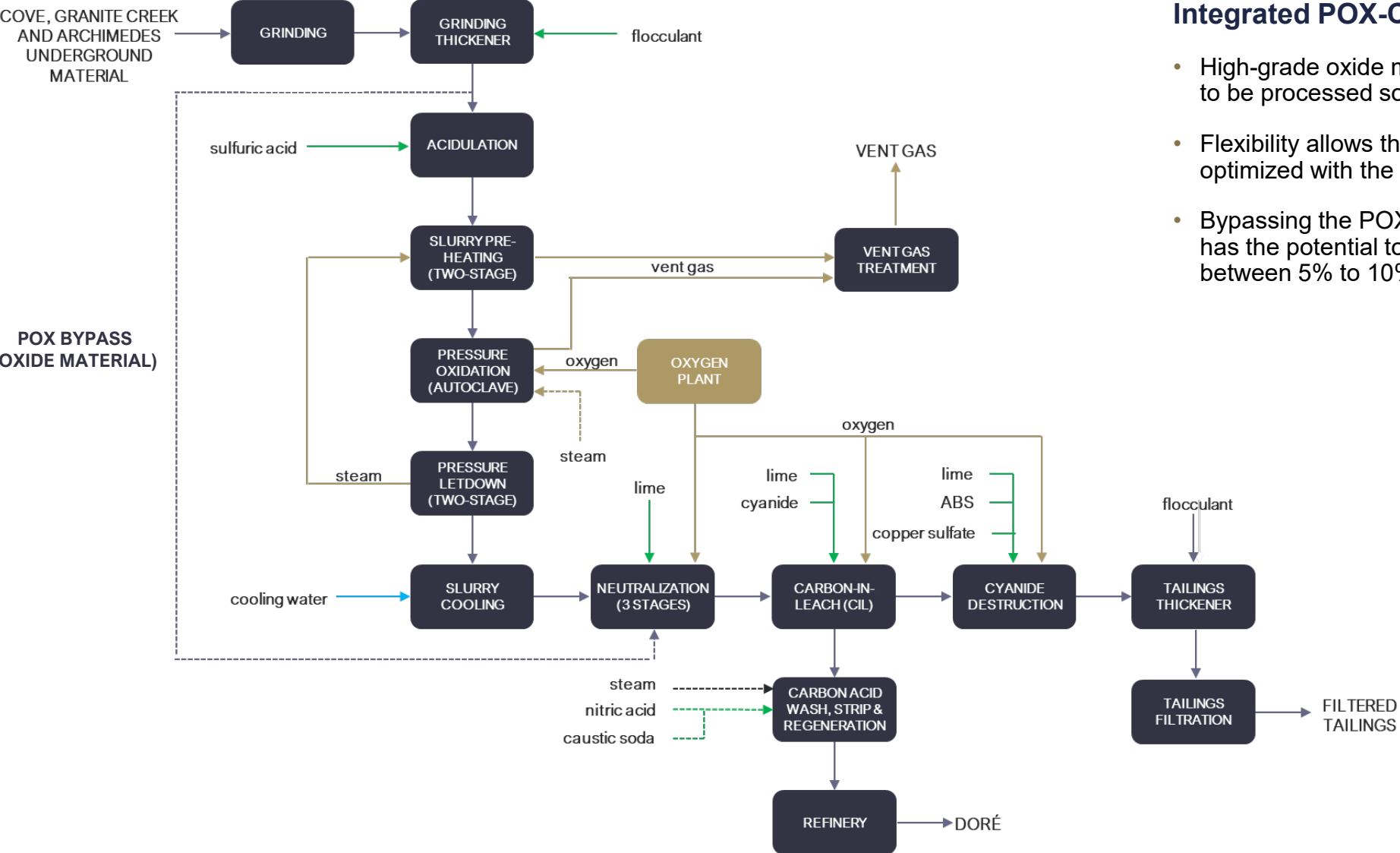
Extensive Trade-Off Studies Completed to Optimize Project Capital

Capital Cost Summary	\$Millions
Direct Costs	
POX and POX Utilities	\$86
Tailings Filtration	\$50
Reagents and Utilities	\$39
Neutralization, CIL, Cyanide Destruction	\$28
Power and Electrical	\$20
Refinery	\$16
Grinding Circuit	\$14
Subtotal Direct Costs	\$253
Indirect Costs	
EPCM	\$66
Construction Indirects	\$17
First Fills/Freight	\$8
Subtotal Indirect Costs	\$91
Total Direct + Indirect Costs	
	\$343
Contingency (~12%)(¹)	\$43
Owner's Cost	\$25
Subtotal Cost	\$412
<i>(Excluding Capital Spares)</i>	
Capital Spares	\$18
Total Project Cost	\$430

- Extensive engineering reviews, operating assessments, and trade-off studies completed to
 - optimize project capital
 - identify opportunities advance Lone Tree’s development timeline
- AACE Class 3 level capital cost definition
- Capital estimate supported by ~14,000 cost line items in the control estimate, providing a high level of confidence.
- Potential payback period: ~12 - 24 months (depending on grade and gold price)

LONE TREE PLANT

Dual POX-CIL Processing Flexibility



Designed to Process Refractory Material Using an Integrated POX-CIL Processing Stream

- High-grade oxide material to bypass POX circuit (autoclave) to be processed solely in the CIL circuit after grinding
- Flexibility allows the treatment of mineralized material to be optimized with the lowest cost and highest recovery rate
- Bypassing the POX circuit when processing oxide material has the potential to increase throughput capacity by between 5% to 10% above nameplate capacity

Appendix



Lone Tree Plant

Q1 2026 Financial Highlights

- **~10,600 ounces in gold sales¹** due to advancements made at Granite Creek, slightly offset by lag in the timing of third-party processing
- **~4,000 recovered ounces of sulfide stockpile** due to timing of sales; expected to be processed Q2 2026
- **Record quarterly revenue of \$52.4M** driven by higher ounces sold and higher average realized gold price²
- **Record quarterly gross profit of \$16.1M** due to higher revenue
- **Net loss of \$78.6M or \$0.09/share** reflecting
 - *non-cash* fair value revaluation losses driven by stronger metal prices and losses on extinguishment of legacy financing instruments
 - higher financing expenses
 - increased development spending
 - partially offset by higher gross profit
- **Adjusted loss of \$28.6M¹ or \$0.03** due to increased spending on pre-development, evaluation and exploration expense plans advanced partially offset by higher gross profit

		Three months ended March 31,	
		2026	2025
Revenue	\$000s	52,390	14,048
Gross profit	\$000s	16,078	2,906
Net loss	\$000s	(78,601)	(41,205)
Loss per share	\$/share	(0.09)	(0.10)
Adjusted loss¹	\$000s	(28,599)	(23,596)
Adjusted loss per share¹	\$/share	(0.03)	(0.05)
Cash flow used in operating activities	\$000s	(45,080)	(22,701)
Cash and cash equivalents	\$000s	513,506	13,475
Drilling	meters	6,937	4,499
Gold produced	oz	10,825	5,240
Gold ounces sold¹	oz	10,590	4,952
Average realized gold price²	\$/oz	4,941	2,825

Notes:

1 Gold ounces sold include attributable gold from mineralized material sales at a payable factor of 57% in 2026 (2025 - 59%).

2 This is a Non-GAAP Measure; please see "Non-GAAP and Supplementary Financial Performance Measures" section.

GRANITE CREEK UNDERGROUND

Q1 2026 Operating Highlights

Total Material Mined Increased

- Higher sulfide tonnes mined
- Lower oxide tonnes
- Reduced water-related impact to mine operations due to effective water mitigation in active mining areas

Gold Output Increased

- Toll-mining agreement established in March 2025
- Improved underground development rates
- Sulfide stockpile of ~4,000 oz of recoverable gold due to timing of third-party processing and gold sales

Granite Creek Property		Three months ended March 31,	
Operational Statistics		2026	2025
Oxide mineralized material mined	tonnes	11,713	15,876
Sulfide mineralized material mined	tonnes	19,714	14,643
Total oxide and sulfide mineralized material mined	tonnes	31,427	30,519
Oxide mineralized material mined grade	g/t	8.86	11.89
Sulfide mineralized material mined grade	g/t	6.16	8.31
Low-grade mineralized material mined ¹	tonnes	13,037	22,845
Low-grade mineralized material grade ¹	g/t	2.85	2.78
Waste mined	tonnes	40,357	27,462
Total material mined	tonnes	84,821	80,826
Processed mineralized material - sulfide	tonnes	26,405	—
Processed mineralized material - leach	tonnes	5,827	33,838
Total processed mineralized material	tonnes	32,232	33,838
Gold produced ²	oz	8,857	2,544
Gold sold ²	oz	8,767	3,106
Underground mine development (pre-development)	meters	387	154
Drilling	meters	1,925	—
Financial Statistics		2026	2025
Mining cost (total mineralized material and waste)	\$/t	161	169
Processing cost (processed mineralized material)	\$/t	283	29
Site general and administrative (“G&A”) (total mineralized material mined ³)	\$/t	45	31
Royalties	\$000s	2,602	505
Capital expenditure	\$000s	4,808	378
Pre-development, evaluation and exploration expenses	\$000s	11,398	3,770

Notes to table:

¹Low-grade mineralized material extracted as part of the mining process that is below cut-off grade but incrementally economic.

²Gold ounces sold include attributable gold from mineralized material sales at a payable factor of 57% in 2026 (2025 - 59%).

³Total mineralized material mined consists of sulfide, oxide, and low-grade mineralized material.

COMPANY OVERVIEW

2026 Guidance

- Largely in line with Preliminary Economic Assessments filed March 2025
- Increased processing costs related to the new toll-milling agreement entered into after PEAs were completed

Granite Creek Underground (groundwater impact not reflected in the PEA)

- ~20% more material expected to be mined
- Infill and step out drill programs expanded due to encouraging 2025 results

Archimedes Underground

- Feasibility study-related costs brought forward from 2028

Mineral Point Open Pit

- Technical and permitting work brought forward from 2028 to 2026

		2026 Guidance
Production⁽¹⁾		
Granite Creek underground	oz Au	30,000 - 40,000
Archimedes underground and residual heap leach	oz Au	10,000
Operating costs		
Granite Creek underground	\$M	\$110 - \$120
Archimedes underground	\$M	\$25 - \$30
Sustaining capital		
	\$M	\$6 - \$8
Growth capital		
Lone Tree Plant	\$M	\$140 - \$160
Granite Creek underground - water treatment	\$M	\$10 - \$15
Pre-development expense		
Granite Creek underground - mine development ¹	\$M	\$20 - \$25
Archimedes underground - mine development	\$M	\$30 - \$35
Evaluation and exploration expense		
Resource expansion and infill drilling:		
Granite Creek underground	\$M	\$10
Archimedes underground	\$M	\$25 - \$30
Mineral Point open pit	\$M	\$45 - \$50
Permitting and technical		
	\$M	\$20 - \$30

Notes to table above:

¹ Granite Creek upon the mine development costs will be capitalized declaration of reserves, assuming reserves will be declared in the feasibility study, which is expected in the second quarter of 2026.

Capital Overview

As of May 14, 2026

Ticker Symbols	TSX: IAU CAD	NYSE American: IAUX USD
52-Week Range	\$0.69-\$3.04	\$0.49-\$2.24
Share Price	\$2.17	\$1.52
Average Daily Volume <i>(90 day)</i>	4.5M	14.0M
Market Cap	\$1.8B	\$1.3B

As of March 31, 2026

Shares Issued & Outstanding¹	853.5M
Warrants ²	204.5M
Options	8.0M
Restricted Share Units	15.5M
Performance Share Units	11.3M
Deferred Share Units	1.8M
Convertible Debentures ²	149.4M
Fully Diluted³	1.2B
Cash	\$514M
Debt⁴	\$438M

Rank	Institution As of May 13, 2026	S/O %	Location
1	Condire Management	9.3	United States
2	Daniel Kaufman	7.0	Puerto Rico
3	Sprott Asset Management	4.2	Canada
4	The Vanguard Group, Inc.	2.9	United States
5	Van Eck Associates Corporation	2.7	United States
6	Nokomis Capital	2.7	United States
7	Pale Fire Capital SE	2.4	Czech Republic
8	Orion Resource Partners (USA)	2.0	United States
9	Trek Financial	1.4	United States
10	Amundi Asset Management	1.3	France
11	Tidal Investments	1.0	United States
12	Eschler Asset Management	0.9	United Kingdom
13	Flat Footed	0.6	United States
14	Alps Advisors	0.6	United States
15	Susquehanna Financial Group	0.6	United States

Research Coverage	Analyst
Canaccord Genuity	Peter Bell
Cormark Securities	Richard Gray
National Bank	Don DeMarco
RBC Capital Markets	Harrison Reynolds
SCP Resource Finance	Justin Chan

- Includes 346M units issued upon closing of a bought deal public offering on May 16, 2025, and 22M units upon closing of a concurrent private placement on May 26, 2025.
- On March 23, 2026, the Company issued \$288M principal amount of unsecured senior convertible debentures with a 3.75% coupon payable semi-annually, maturing April 15, 2031, for \$275M of net proceeds after \$13M of issuance costs. The debentures are convertible at 519.4805 shares per \$1,000 principal, implying an initial conversion price of ~\$1.93/share.
- Assumes the exercise or redemption of all outstanding warrants, convertible debentures, RSUs, PSUs, options, and DSUs of the Company.
- Debt of \$438M includes: \$275M 2026 Convertible Debentures, \$145M 2026 Gold Prepay, \$18M Silver Purchase Agreement liability, and \$0.7M other debt; excludes NSR royalty, warrant liability, lease liabilities, and other liabilities. Other liabilities of \$316M include: \$232M NSR Royalty, \$48M Silver Purchase Agreement embedded derivative, \$24M warrant liability, \$8M share-based payment liability, and \$4M lease liability.

TORONTO OFFICE

Proven Track Record in Developing & Financing Mining Operations



RICHARD YOUNG
President & CEO

Former President & CEO of Teranga Gold, leading its growth and acquisition strategy.

Proven track record in mine development, operations, corporate strategy, and value creation in the mining sector.

Previously held senior leadership roles at Barrick Gold.

30+ years of experience in mining, including finance and capital markets.



KATERINA DELUCA
SVP Treasury

20+ years of experience in financial reporting and analysis, tax, treasury, financing and M&A, specializing in gold mining.

Recently served as the VP Treasury and Financial Planning & Analysis at Argonaut Gold, and Senior Finance Director at Teranga Gold prior to their acquisitions.

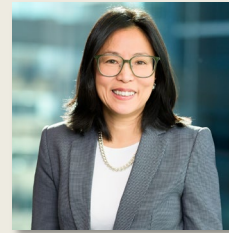


PAUL CHAWRUN
EVP & COO

Executive mining engineer with 30+ years of technical, operating, and corporate leadership experience.

Proven track record developing mines from permitting through to production.

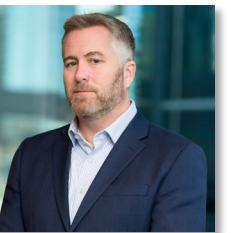
Previously COO & EVP at Centerra Gold, as well as COO of Teranga Gold, and oversaw technical services at Detour Gold for the development of the Detour Lake Project.



CINDY TSEO
VP Finance

25+ years of experience in finance, mostly within finance leadership roles in the mining industry.

Most recently served as VP Finance at Argonaut Gold and held senior finance roles at Lundin Mining, overseeing reporting and financial reporting and analysis.



DAVID SAVARIE
EVP & General Counsel

20+ years of international experience as in-house and external counsel, senior executive, and director.

17 years specializing in gold mining, focusing on project development, permitting, financing, and operations across Eastern Europe, West Africa, and North America.

Recently served as SVP, General Counsel at Teranga Gold and Argonaut Gold before their acquisitions.



CATERINA DE ROSA
VP Investor Relations

10+ years of experience in investor relations and corporate communications at publicly listed mining companies, specializing in capital markets engagement, regulatory disclosure, corporate reputation, media relations, ESG, and internal communications.

Previously held investor relations roles at Argonaut Gold, Teranga Gold, AuRico Gold, and North American Palladium.



LEILY OMOUMI
SVP Corporate Development & Strategy

17+ years of experience in mining and capital markets, including M&A and corporate strategy.

Previously served as VP, Corporate Development at Teranga Gold prior to its acquisition.

Former buy-side analyst at BMO Asset Management, covering mining, oil and gas equities, and sell-side analyst at Scotia Capital, focused on precious metals.

RENO OFFICE

A Team With Deep Nevada Mining Experience



RYAN SNOW
EVP & CFO

Former VP of Finance at Nevada Copper supporting development of the Pumpkin Hollow mine.

Previously held senior financial positions at Tahoe Resources in Nevada.

20 years of experience in mining, corporate finance, accounting, and project management.



MARK MILLER
SVP
Environmental
& Permitting

Over three decades of experience leading environmental management programs across multiple industries, including mining, where he has managed large-scale permitting, compliance and reclamation efforts.

Previously held senior roles at Nevada Gold Mines and Barrick Gold, successfully implementing strategic plans and driving cost savings while maintaining regulatory compliance.



TODD ESPLIN
VP Technical
Services

Former senior operations and technical leader at Barrick Gold, specializing in refractory processing and optimization at Goldstrike and Turquoise Ridge mines in Nevada.

Extensive experience in Nevada's Carlin Trend and Cortez mining district, most recently Mining & Process Manager for Kinross Gold.

Expertise in mine design, metallurgy, project evaluation, and operational efficiency.

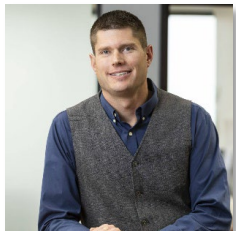


JANELLE ORDAL
VP
External Affairs &
Sustainability

15+ years of leadership experience, including a decade advancing complex mining and energy development projects through stakeholder and regulatory engagement.

Previously led strategic infrastructure coordination at NV Energy, including relationship management across mining, technology, government, and healthcare.

Active in Nevada's mining community, serving on nonprofit and education boards supporting workforce and economic development.



TIM GEORGE
VP Operations

Extensive hands-on experience in operations, processing, development and engineering in both open pit and underground mines, with a recent 10-year focus on gold mines in Nevada.

Proven track record of optimizing mine performance and efficiency.



VICTOR ORTIZ
VP
Health, Safety &
Security

18 years of experience in mining operations with a focus on workforce development, emergency response leadership, and implementing safety management systems that support performance and worker protection at Nevada Gold Mines and Barrick Gold.

Recognized by the Nevada Mining Association for his contributions to advancing safety leadership in the mining industry.



TYLER HILL
VP Geology

Professional Geologist with 10+ years of experience in Nevada mineral exploration and project management.

Previously evaluated exploration projects across Nevada for a subsidiary of Waterton Global Resource Management.

Part of the McCoy-Cove exploration team that discovered 1.1 Moz Au, increasing the Cove deposit resource by >400%.

Experienced Board of Directors



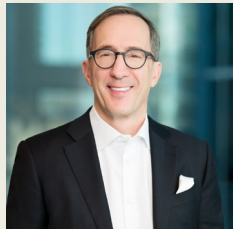
**RON
CLAYTON**
Chairman

40+ years of exploration, development, construction and mine operation experience
Former President, CEO & Director of 1911 Gold Corp
Former President & CEO Tahoe Resources, SVP Operations Hecla, VP Operations Stillwater



**RON
BUTLER JR.**
Director

30+ years of experience in audit, financial and strategic planning, operational excellence, and corporate governance
Managing Partner at Ernst & Young in Arizona for 29 years
U.S. Mining & Metals Leader at Ernst & Young
Executive Committee City of Phoenix's \$500M General Obligation Bond Program
EY's West Region Executive Leadership Team
Certified Public Accountant (CPA)



**RICHARD
YOUNG**
President &
CEO,
Director

30+ years of operational & leadership experience
Former CEO of Teranga Gold Corporation
Former President & CEO of Argonaut Gold
Recipient of the 2008 & 2017 PDAC Sustainability Award
Chartered Accountant and a Certified Public Accountant



**ARTHUR
EINAV**
Director

General Counsel and Senior Managing Director at Sprott Inc.
Co-head of Enterprise Shared Services Group with specific responsibility for legal, compliance, risk and human resources
Member of the Law Society of Upper Canada and the New York State Bar



**JOHN
BEGEMAN**
Director

40+ years of operational & leadership experience
Director Allied Gold
Director Pan American Silver
Former Executive Chairman Premier Gold
Former Director Yamana Gold
Former CEO Avion Gold Corp
Former COO Zinifex Canada

Experienced Board of Directors *continued*



**MICHAEL
JALONEN**
Director

Nearly 40 years of mining and capital markets experience
30 years as Managing Director and North American Senior Precious Metals Research Analyst at Bank of America Securities (BofA)
Consistently ranked among the leading mining analysts in North America
Global Coordinator for BofA's Metals, Mining & Steel Research Team
Chartered Financial Analyst (CFA) and began his career as a geologist



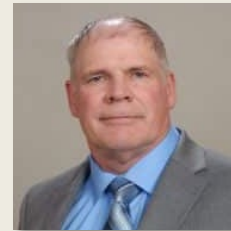
**JOHN
SEAMAN**
Director

25 years of experience in the public minerals and mining industry
CFO of Premier Gold Mines (2006-2012)
CFO of Wolfden Resources Inc. (2002-2007)



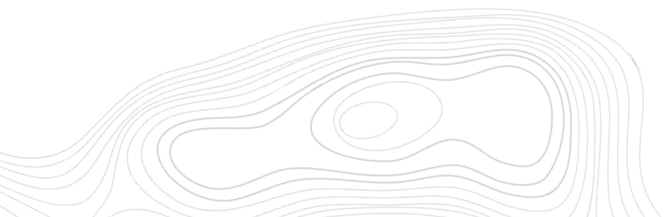
**CASSANDRA
JOSEPH**
Director

20+ years of experience in corporate, environmental & intellectual property law
Currently General Counsel & Corporate Secretary of Ivanhoe Electric
Former Senior VP & General Counsel for Nevada Copper
Former VP, Associate General Counsel, Corporate Secretary, & Chief Compliance Officer for Tahoe Resources



**STEVEN
YOPPS**
Director

35+ years of operational, technical, project development, and regulatory experience Nevada
Vice President of Nevada Projects for AngloGold Ashanti
Manager of Growth Projects for Nevada Gold Mines
General Manager of the Ruby Hill Mine (currently i-80 Gold's wholly owned Ruby Hill property)
Managed Barrick's Goldstrike's autoclave, roaster, and mill facilities for more than a decade
Metallurgical engineer and Qualified Person recognized by the Mining & Metallurgical Society of America



Mineral Resources Attributable to i-80 Gold Corp.

MINERAL RESOURCE ESTIMATE AS AT DECEMBER 31, 2024

	Tonnes (kt)	Au Grade (Au g/t)	Ag Grade (Ag g/t)	Au Ounces (koz)	Ag Ounces (koz)
Measured					
Granite Creek – Open Pit ⁽¹²⁾	26,360	1.26		1,066	
Granite Creek – Underground ⁽¹⁰⁾	133	8.50		37	
Lone Tree – Open Pit ⁽¹⁷⁾					
Cove – Underground ⁽¹⁵⁾					
Ruby Hill – Mineral Point Open Pit ⁽¹⁵⁾					
Ruby Hill – Archimedes Underground ⁽¹³⁾					
Indicated					
Granite Creek – Open Pit ⁽¹²⁾	11,339	1.01		369	
Granite Creek – Underground ⁽¹⁰⁾	641	10.90		224	
Lone Tree - Open Pit ⁽¹⁷⁾	7,690	1.73		428	
Cove – Underground ⁽¹⁵⁾	1,177	8.20	15.0	310	568
Ruby Hill – Mineral Point Open Pit ⁽¹⁴⁾	216,982	0.48	15.0	3,376	104,332
Ruby Hill – Archimedes Underground ⁽¹³⁾	1,791	7.60	1.6	436	92
Ruby Hill – Archimedes Open Pit ⁽¹⁶⁾	4,320	1.96	10.6	272	1,490
MEASURED & INDICATED	270,435	0.75	14.8*	6,518	106,482
Inferred					
Granite Creek - Open Pit ⁽¹²⁾	2,148	1.09		75	
Granite Creek – Underground ⁽¹⁰⁾	782	13.00		326	
Lone Tree - Open Pit ⁽¹⁷⁾	52,940	1.64		2,789	
Cove – Underground ⁽¹⁵⁾	4,047	8.90	11.1	1,156	1,439
Ruby Hill – Mineral Point Open Pit ⁽¹⁴⁾	194,442	0.34	14.6	2,117	91,473
Ruby Hill – Archimedes Underground ⁽¹³⁾	4,188	7.30	2.1	988	286
Ruby Hill – Archimedes Open Pit ⁽¹⁶⁾	870	1.12	8.5	31	250
INFERRED	259,417	0.90	14.2*	7,482	93,448

Notes to table:

(10)(12)(13)(14)(15)(16)(17) Refer to the related Endnotes in the Appendix for the notes related to the following mineral resource estimates, such as classification, cutoff grades, reporting standards, and relevant assumptions.

The mineral resource estimate is reported as of December 31, 2024, as disclosed in the PEAs filed in March 2025, and does not reflect depletion from mining activities during 2025. The Company produced 28,196 ounces of gold for the year ended December 31, 2025. A Mineral Resource Comparison table presenting the mineral resources as of December 31, 2024 and December 31, 2025 is available on page 42 of the Company's Annual Report on Form 10-K for the fiscal year ended December 31, 2025.

*Silver weighted average grade calculated on tonnes having silver grade and ounces.

Reported table numbers have been rounded as required by reporting guidelines and may result in summation discrepancies.

Mineral resources, which are not mineral reserves, do not have demonstrated economic viability.

Mineral Resources Defined by Underground & Open Pit Deposits

UNDERGROUND MINERAL RESOURCE ESTIMATE

	Tonnes (kt)	Au Grade (g/t Au)	Ag Grade (g/t Ag)	Au Ounces (koz)	Ag Ounces (koz)
Measured & Indicated					
Granite Creek – Underground ⁽⁶⁾	774	10.49		261	
Cove – Underground ⁽¹²⁾	1,177	8.20	15.00	310	568
Ruby Hill – Archimedes Underground ⁽¹⁰⁾	1,791	7.60	1.60	436	92
MEASURED & INDICATED	3,742	8.39	6.91	1,007	660
Inferred					
Granite Creek – Underground ⁽⁶⁾	782	13.00		326	
Cove – Underground ⁽¹²⁾	4,047	8.90	11.10	1,156	1,439
Ruby Hill – Archimedes Underground ⁽¹⁰⁾	4,188	7.30	2.10	988	286
INFERRED	9,017	8.51	6.52*	2,470	1,725

OPEN PIT MINERAL RESOURCE ESTIMATE

	Tonnes (kt)	Au Grade (g/t Au)	Ag Grade (g/t Ag)	Au Ounces (koz)	Ag Ounces (koz)
Measured & Indicated					
Granite Creek – Open Pit ⁽⁹⁾	37,701	1.18		1,435	
Ruby Hill – Mineral Point Open Pit ⁽¹¹⁾	216,982	0.48	15.00	3,376	104,332
Ruby Hill – Archimedes Open Pit ⁽¹³⁾	4,320	1.95	10.60	272	1,490
Lone Tree - Open Pit ⁽¹⁴⁾	7,690	1.73		428	
MEASURED & INDICATED	266,693	0.64	14.91	5,511	105,822
Inferred					
Granite Creek – Open Pit ⁽⁹⁾	2,148	1.09		75	
Ruby Hill – Mineral Point Open Pit ⁽¹¹⁾	194,442	0.34	14.60	2,117	91,473
Ruby Hill – Archimedes Open Pit ⁽¹³⁾	870	1.12	8.50	31	250
Lone Tree - Open Pit ⁽¹⁴⁾	52,940	1.69		2,789	
INFERRED	250,400	0.62	14.57*	5,012	91,723

(6)(9)(10)(11)(12)(13)(14) Refer to the related Endnotes in the Appendix for the notes related to the following mineral resource estimates, such as classification, cutoff grades, reporting standards, and relevant assumptions.

*Silver weighted average grade calculated on tonnes having silver grade and ounces.

The mineral resource estimate is reported as of December 31, 2024, as disclosed in the PEAs filed in March 2025, and does not reflect depletion from mining activities during 2025. The Company produced 28,196 ounces of gold for the year ended December 31, 2025. A Mineral Resource Comparison table presenting the mineral resources as of December 31, 2024 and December 31, 2025 is available on page 42 of the Company's Annual Report on Form 10-K for the fiscal year ended December 31, 2025.

Reported table numbers have been rounded as required by reporting guidelines and may result in summation discrepancies.

Mineral resources, which are not mineral reserves, do not have demonstrated economic viability.

COMPANY OVERVIEW

Up to \$500M Financing Package Secured

Closed Q1 2026

\$250M Franco-Nevada Royalty

\$225M Available at closing
\$25M allocated to accelerate Mineral Point feasibility study and permitting work in 2026

\$25M Second payout for Mineral Point
Expected to be available in 2026 after initial \$25M allocation is spent

1.5% Life of mine net smelter return royalty
Stepping up to 3.0% January 2031

Production covers all mineral properties:
Granite Creek, Cove, the Ruby Hill Complex and Lone Tree

\$250M Gold Prepayment Facility with National Bank & Macquarie Bank

\$150M Initial drawdown at closing⁽⁶⁾

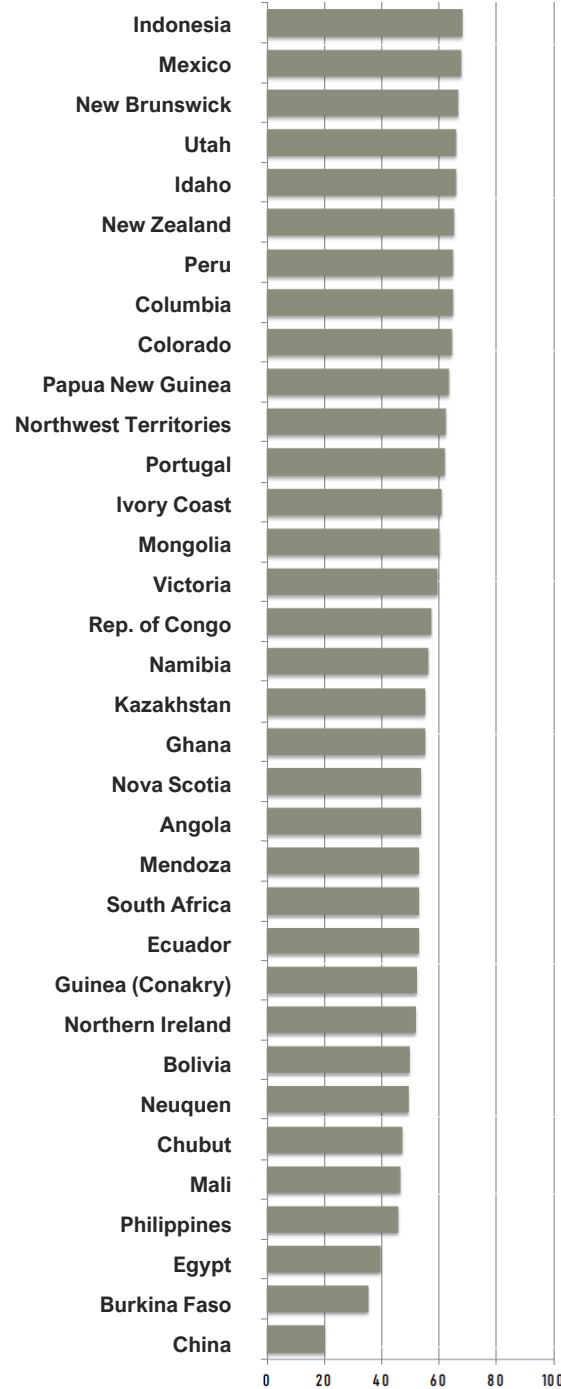
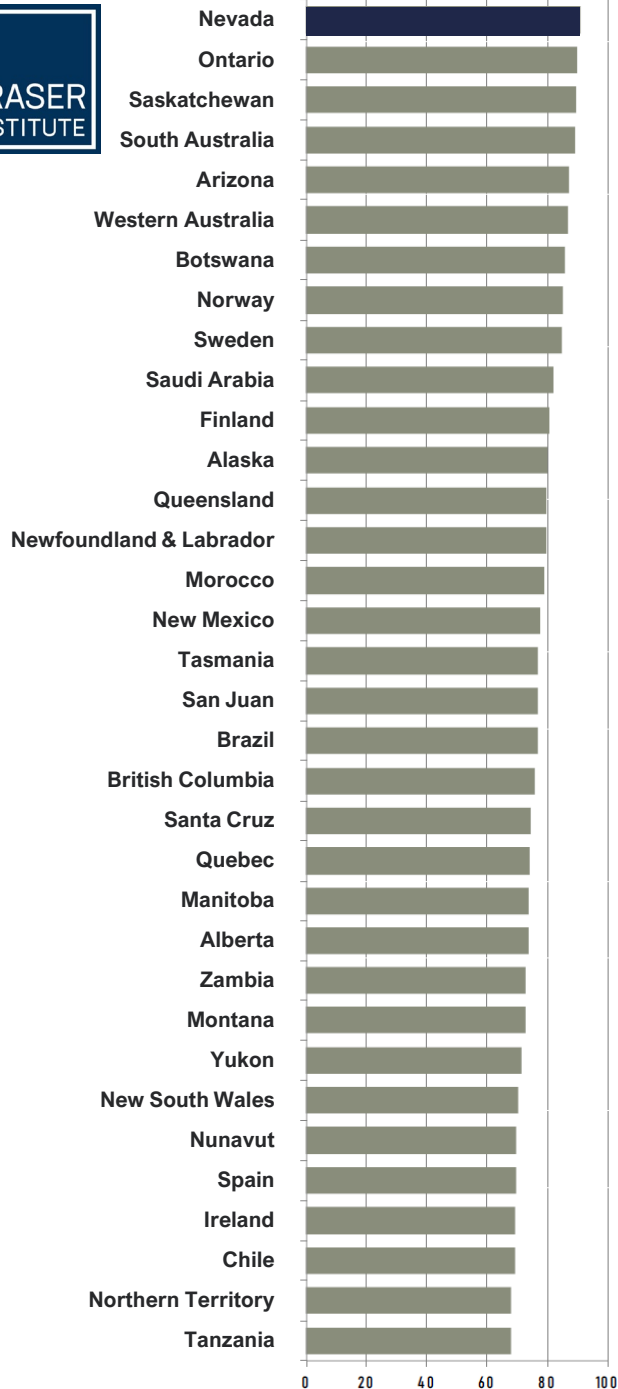
\$100M Accordion feature available for a 24-month period upon closing
Expected to execute H1 2027

~40_{koz Au} To be delivered for the initial drawdown
Over a 30-month period beginning January 2028

Plan to transition prepayment facility into corporate revolver to fund Mineral Point development

Royalty, accordion feature, and gold prepayment facility subject to customary conditions and lender approval. Gold prepay also requires an intercreditor arrangement.

(6) See Endnote 6 in Appendix



Nevada: Ranked #1 Jurisdiction Globally for Investment Attractiveness

Fraser Institute Mining Attractiveness Index Annual Survey of Mining Companies, 2025

- Moved up from 2nd place in 2024
- Nevada consistently ranked top 10 over the last 11 surveys
- Beyond mineral potential, government policies are a key determinant of mining investment

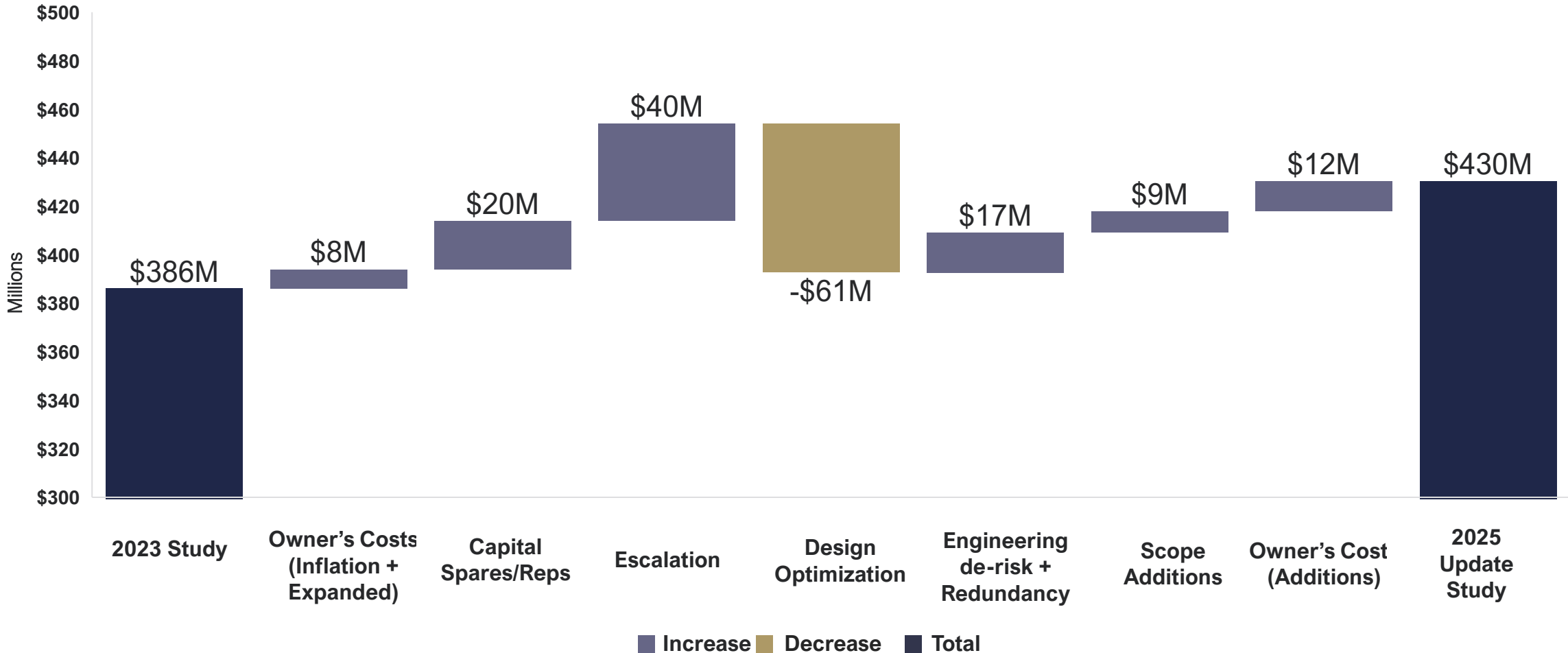
About the Annual Survey of Mining Companies

- Ranks jurisdictions according to the extent that public policy factors encourage or discourage mining investment
- 2,304 respondents
- 68 jurisdictions from all continents in 2025 except Antarctica (82 in 2024)

Source: Fraser Institute Annual Survey of Mining Companies, 2025 published February 2026 by Julio Mejia and Elmira Aliakbari at www.fraserinstitute.org.

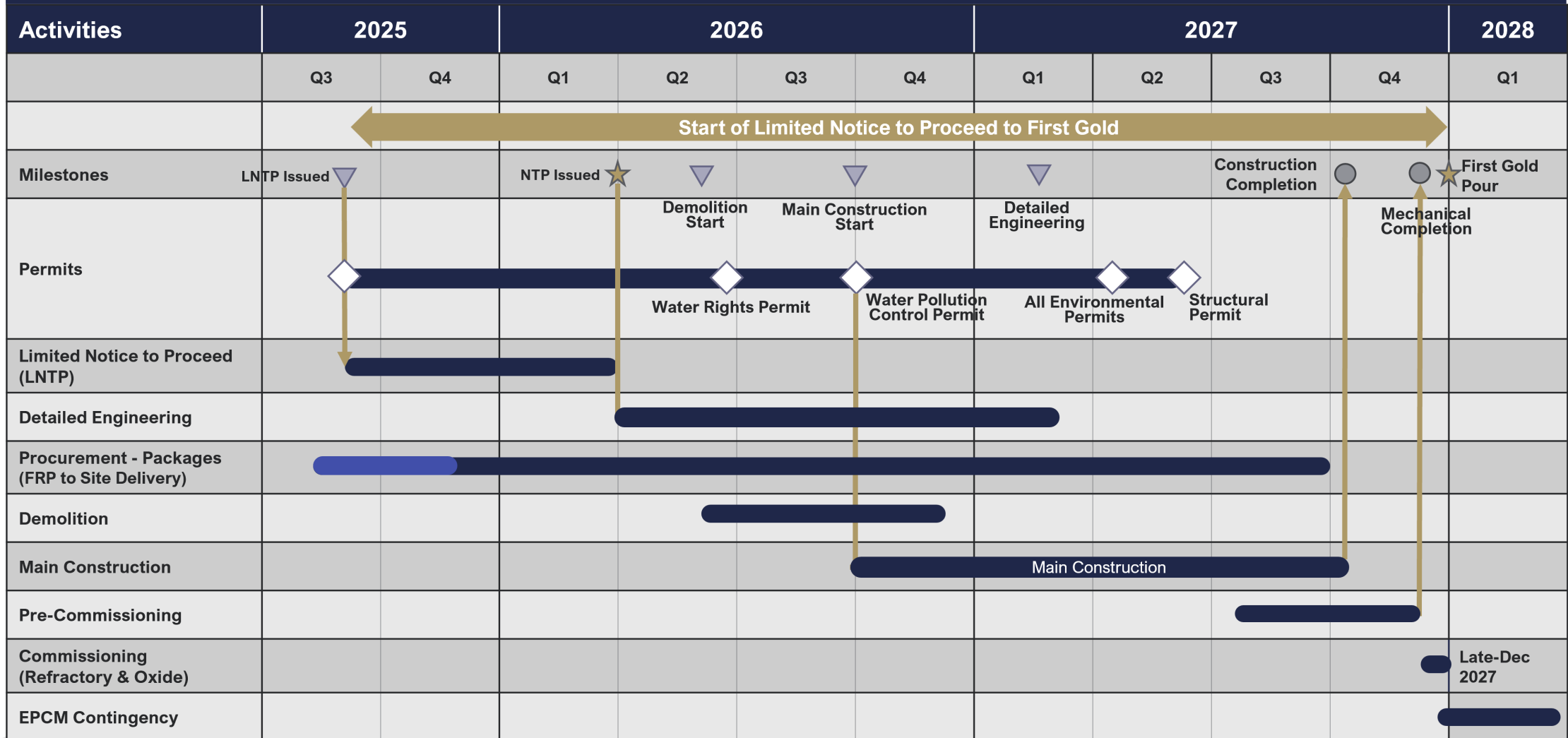
Capex Waterfall Comparison to 2023 Study

- › CAPEX supported by ~14,000 cost line items in the control estimate
- › Extensive engineering reviews, operating assessments, and trade-off studies completed to optimize project capital



Refurbishment Timeline Tracking Well

Key Milestones to Construction and Commissioning



Endnotes

- 1) Based on capital costs, gold output estimates and average annual gold output targets in the most recent life of mine gold output schedules disclosed in the latest technical studies filed for each respective project and related property: the Lone Tree Facility, Granite Creek underground, Archimedes underground, Cove underground and Granite Creek open pit when using a gold price assumption of \$3,600 per ounce for the purposes of anticipated cash flow from operations. While the economics of the latest technical studies were completed using a gold price assumption of \$2,175 per ounce with gold price sensitivities of up to \$3,000 per ounce, a gold price assumption of \$3,600 per ounce is in line with current long term consensus prices. These anticipated output figures are preliminary in nature and are based on mineral resources, which do not have demonstrated economic viability, and are not mineral reserves. In addition, each of the foregoing technical reports are preliminary economic assessments/initial assessments that are preliminary in nature and each include an economic analysis that is based, in part, on inferred mineral resources. Inferred mineral resources are considered too speculative geologically to have for the application of economic considerations applied to them that would enable them to be categorized as mineral reserves. As such, there is no certainty that the output targets will be realized. The anticipated output targets are also pending the refurbishment and commissioning of the Lone Tree Plant. The output targets presented herein are Company goals and not a projection of results and should not be taken as output guidance. All of the Company's projects are considered exploration stage projects under S-K 1300 because the Company has not determined mineral reserves at any of its properties pursuant to S-K 1300. With respect to Granite Creek underground and Archimedes underground, located on the Ruby Hill property, the Company has started extraction activities without determining mineral reserves. The Company believes it has sufficient secured and committed capital to fully fund Phase 1 and Phase 2 projects under its current development plan. These phases are expected to generate sufficient operating cash flow to support the funding of the current Phase 3 project. The following technical reports for each project and related property have been prepared in accordance with NI 43-101: Preliminary Economic Assessment Technical Report for the Cove Project, Lander County, Nevada (March 31, 2025); Preliminary Economic Assessment Technical Report for the Granite Creek Mine Project, Humboldt County, Nevada, USA (March 31, 2025); and Preliminary Economic Assessment NI 43-101 Technical Report for the Ruby Hill Project, Eureka County, Nevada, USA (March 31, 2025). Corresponding technical reports prepared in accordance with S-K 1300 are as follows: Initial Assessment & Technical Report Summary for the Cove Project, Lander County, Nevada (March 26, 2025); Initial Assessment of the Granite Creek Mine, Humboldt County, NV (March 26, 2025); and Initial Assessment of the Ruby Hill Project, Eureka County NV (March 29, 2025).
- 2) For the Archimedes Underground Project, cash flow and Net Present Value ("NPV") are calculated as of the start of construction, which is anticipated to commence in early in the second quarter 2025, subject to obtaining the necessary permits by March 31, 2025, as anticipated. After tax metrics for Archimedes Underground assumes the Company consume existing net operating losses. For the Granite Creek Underground Project, cash flow and NPV are calculated as of January 2025. For the Granite Creek Open Pit Project, cash flow and NPV are calculated as of the start of construction, which is anticipated to commence in early 2028, subject to obtaining the necessary permits by December 31, 2027, as anticipated. For the Mineral Point Open Pit Project, cash flow and NPV are calculated as of the start of construction, which is anticipated to commence in early 2030, subject to obtaining the necessary permits by December 31, 2029, as anticipated. After tax metrics for Mineral Point assumes the Company consume existing net operating losses. For the Cove Project, cash flow and NPV are calculated as of the start of construction, which is anticipated to commence in January 2028. Further information about the updated PEAs referenced in this presentation including information in respect of data verification, assay procedures, the quality assurance program, quality control measures, key assumptions, parameters, risks and other factors, are contained in each respective PEA filed by the Company and which are available on EDGAR at www.sec.gov/edgar, SEDAR+ at www.sedarplus.ca, and the Company's website at www.i80gold.com. The PEAs in respect of Archimedes Underground, Mineral Point Open Pit, Cove, Granite Creek Underground, and Granite Creek Open Pit are each preliminary in nature and each includes an economic analysis that is based, in part, on inferred mineral resources. Inferred mineral resources that are considered too speculative geologically to have for the application of economic considerations applied to them that would enable them to be categorized as mineral reserves, and there is no certainty that the results of each PEA will be realized. Mineral resources do not have demonstrated economic viability and are not mineral reserves.
- 3) Gold equivalent ounces (AuEq oz) defined as recovered Au oz plus recovered Ag oz times the price ratio of Ag to Au. $AuEq = Au \text{ recovered oz} + [(Ag \text{ recovered oz}) \times (\$27.25/\$2,175)]$. LOM overall recoveries for Au and Ag are 78% and 41% respectively. Production defined as process recovered ounces.
- 4) Pending the completion the successful funding, refurbishment, and commissioning of the Company's Lone Tree autoclave processing facility.
- 5) In May 2025, the Company completed a public offering of 345,760,000 units at \$0.50 per unit for gross proceeds of \$172,880,000, including exercise of the over-allotment option. Each unit consisted of one common share and one-half of one common share purchase warrant exercisable at \$0.70 until November 16, 2027. A concurrent private placement for 22,240,000 units under the same terms generated \$11,120,000 for aggregate gross proceeds of approximately \$184,000,000, with up to \$130,000,000 in additional proceeds assuming full exercise of the related warrants over the next 18 months.
- 6) Under the terms of the gold prepayment facility with National Bank and Macquarie Bank announce by press release on February 12, 2026, a condition precedent to the drawdown is a fully funded base case model following the completion of the recapitalization plan.
- 7) The proceeds of the financing package of up to \$500 million announced by press release on February 12, 2026 (the "Financing Package") will be used to retire all of the Company's existing debt obligations, including approximately \$95 million to settle the Gold Prepay Agreement and the Convertible Loan with Orion Resource Partners (across various funds) with the exception of a Silver Purchase and Sale Agreement held by Orion Mine Finance Fund III (HG) Ltd. Additionally, Convertible Debentures amounting to approximately \$86 million will be retired from the proceeds of the Financing Package. Convertible Debenture holders have the right to elect to convert accrued interest into i-80 Gold common shares.
- 8) Based on LOM gold output and capital costs outlined in the most recent LOM schedules disclosed in the latest technical studies filed for each respective project and related property: the Lone Tree Facility, Granite Creek underground, Archimedes underground, Cove underground and Granite Creek open pit when using a gold price assumption of \$3,600/oz for the purposes of anticipated cash flow from operations. While the economics of the latest technical studies were completed at \$2,175/oz with gold price sensitivities of up to \$3,000/oz, a gold price assumption of \$3,600/oz is in line with current long term consensus prices.

Endnotes *continued*

- 9) Turquoise Ridge Complex gold mineral resource estimate of approximately 20 million ounces (110 Mt at 5.42 g/t Au) as at December 31, 2023 based on publicly filed technical reports of Barrick Gold Corporation available on SEDAR+ at www.sedarplus.ca and www.barrick.com. No qualified person of the Company has independently verified any mineral resource information in respect of the Turquoise Ridge Complex contained in this press release and such information is not necessarily indicative of the mineralization on the property subject to such technical reports.
- 10) Granite Creek Underground Project: Mineral Resources have been estimated at a gold price of \$2,175 per troy ounce and a silver price of \$27.25 per ounce; Mineral Resources have been estimated using gold metallurgical recoveries of 85.2% to 94.2% for pressure oxidation; Payment for refractory mineralization sold to a third party is 58%. Oxide CIL mineralization payments vary from 40% to 70% based upon the grade of the mineralization; The cutoff grade for refractory Mineral Resources varies from 0.151 to 0.184 opt. for acidic conditions. The cutoff grade for oxide mineral resources is 0.075 opt; The contained gold estimates in the Mineral Resource table have not been adjusted for metallurgical recoveries; Numbers have been rounded as required by reporting guidelines and may result in apparent summation differences; A Mineral Resource is a concentration or occurrence of solid material of economic interest in or on the Earth's crust in such form, grade or quality and quantity that there are reasonable prospects for eventual economic extraction. The location, quantity, grade or quality, continuity and other geological characteristics of a Mineral Resource are known, estimated or interpreted from specific geological evidence and knowledge, including sampling. An Inferred Mineral Resource is that part of a Mineral Resource for which quantity and grade or quality are estimated on the basis of limited geological evidence and sampling. Geological evidence is sufficient to imply but not verify geological and grade or quality continuity. An Inferred Mineral Resource has a lower level of confidence than that applying to an Indicated Mineral Resource and must not be converted to a Mineral Reserve. It is reasonably expected that the majority of Inferred Mineral Resources could be upgraded to Indicated Mineral Resources with continued exploration; Mineral Resources, which are not Mineral Reserves, do not have demonstrated economic viability. The estimate of Mineral Resources may be materially affected by environmental, permitting, legal, title, socio-political, marketing, or other relevant factors; Mineral Resources have an effective date of December 31, 2024, and; The reference point for mineral resources is in situ.
- 11) This is a performance measure commonly used in the gold mining industry that is not defined under United States Generally Accepted Accounting Principles ("US GAAP"). This term should not be considered in isolation or as a substitute for measures prepared in accordance with US GAAP and should be read in conjunction with the Company's financial statements Please refer to the slide titled "Non-GAAP Financial Performance Measures" in this presentation for more information.
- 12) Granite Creek Open Pit: The effective date of the Mineral Resources Estimate is December 31, 2024. The Qualified Persons for the estimate are Terre Lane QP-MMSA and Hamid Samari QP-MMSA of GRE. Mineral resources are reported at a 0.30 g/t cutoff, an assumed gold price of 2,040 \$/tr. oz, using variable recovery, a slope angle of 41 degrees, 6% royalty, heap leach processing cost \$9.04 per tonne (includes admin), CIL processing cost of \$17.22 per tonne (includes admin).
- 13) Archimedes Underground: Underground Mineral Resources have been estimated at a gold price of \$2,175 per troy ounce and a silver price of \$27.25 per ounce (Section 19.1). Mineral Resources have been estimated using pressure oxidation gold metallurgical recoveries of 96.8% and 89.5% for the 426 and Ruby Deeps deposits respectively. Pressure oxidation cutoff grades are 5.06 and 5.48 Au g/t (0.148 and 0.160 opt) for the 426 and Ruby Deeps deposits respectively. Detailed input mining, processing, and G&A costs are defined in Section 18.1. Units shown are metric. The contained gold ounces estimates in the Mineral Resource table have not been adjusted for metallurgical recoveries. Numbers have been rounded as required by reporting guidelines and may result in apparent summation differences. A Mineral Resource is a concentration or occurrence of solid material of economic interest in or on the Earth's crust in such form, grade or quality and quantity that there are reasonable prospects for eventual economic extraction. The location, quantity, grade or quality, continuity and other geological characteristics of a Mineral Resource are known, estimated or interpreted from specific geological evidence and knowledge, including sampling. An Inferred Mineral Resource is that part of a Mineral Resource for which quantity and grade or quality are estimated on the basis of limited geological evidence and sampling. Geological evidence is sufficient to imply but not verify geological and grade or quality continuity. An Inferred Mineral Resource has a lower level of confidence than that applying to an Indicated Mineral Resource and must not be converted to a Mineral Reserve. It is reasonably expected that the majority of Inferred Mineral Resources could be upgraded to Indicated Mineral Resources with continued exploration. Mineral Resources, which are not Mineral Reserves, do not have demonstrated economic viability. The estimate of Mineral Resources may be materially affected by environmental, permitting, legal, title, sociopolitical, marketing, or other relevant factors. Mineral Resources have an effective date of December 31, 2024. The reference point for Mineral Resources is in situ.
- 14) Mineral Point Open Pit: Mineral resources have an effective date of December 31, 2024. Mineral resources are not mineral reserves and do not have demonstrated economic viability. Mineral resources are the portion of Mineral Point that can be mined profitably by open pit mining method and processed by heap leaching. Mineral resources are below an updated topographic surface. Mineral resources are constrained to economic material inside a conceptual open pit shell. The main parameters for pit shell construction are a gold price of \$2,175/oz Au, a silver price of \$26.00/oz, average gold recovery of 77%, average silver recovery of 40%, open pit mining costs of \$3.31/tonne, heap leach average processing costs of \$3.47/tonne, general and administrative cost of \$0.83/tonne processed, gold refining cost of \$1.85/oz, silver refining cost of \$0.50, and a 3% royalty. Mineral resources are reported above a 0.1 g/t Au cutoff grade. Mineral resources are stated in situ. Mineral resources have not been adjusted for metallurgical recoveries. Reported units are metric tonnes. prepared under the supervision of, and has been reviewed and approved by Aaron Amoroso, MMSA QP (01548QP) and Jonathan Heiner, P.E., SME-RM (4143808) of Forte Dynamics, Inc, and Tyler Hill CPG., Vice President Geology for the Company, who are all qualified persons within the meaning of NI 43-101 and S-K 1300.

Endnotes *continued*

- 15) Cove Underground Project: Mineral resources have been estimated at a gold price of \$2,175 per troy ounce and a silver price of \$27.25 per troy ounce; Mineral resources have been estimated using gold metallurgical recoveries ranging from 73.2% to 93.3% for roasting and 78.5% to 95.1 % for pressure oxidation; Roaster cutoff grades range from 4.15 to 5.29 Au g/t (0.121 to 0.154 opt) and pressure oxidation cutoff grades range from 3.83 to 4.64 Au g/t (0.112 to 0.135 opt); The effective date of the mineral resource estimate is December 31, 2024; Mineral resources, which are not mineral reserves, do not have demonstrated economic viability. The estimate of mineral resources may be materially affected by environmental, permitting, legal, title, socio-political, marketing, or other relevant factors; An inferred mineral resource is that part of a mineral resource for which quantity and grade or quality are estimated on the basis of limited geological evidence and sampling. Geological evidence is sufficient to imply but not verify geological and grade or quality continuity. An inferred mineral resource has a lower level of confidence than that applying to an indicated mineral resource and must not be converted to a mineral reserve. It is reasonably expected that the majority of inferred mineral resources could be upgraded to indicated mineral resources with continued exploration; and the reference point for mineral resources is in situ. Prepared under the supervision of, and has been reviewed and approved by Dagny Odell, P.E., (SME No. 2402150) Practical Mining LLC, and Tyler Hill CPG., Vice President Geology for the Company, who are all qualified persons within the meaning of NI 43-101 and S-K 1300.
- 16) Archimedes Open Pit: Mineral Resources have an effective date of December 31, 2024. Mineral Resources are the portion of Mineral Point that can be mined profitably by open pit mining method and processed by heap leaching. Mineral Resources are below an updated topographic surface (below Archimedes pit). Mineral Resources are constrained to economic material inside a conceptual open pit shell. The main parameters for pit shell construction are a gold price of \$2,175/oz Au, a silver price of \$26.00/oz, average gold recovery of 77%, average silver recovery of 40%, open pit mining costs of \$3.31/tonne, heap leach average processing costs of \$3.47/tonne, general and administrative cost of \$0.83/tonne processed, gold refining cost of \$1.85/oz, silver refining cost of \$0.50, and a 3% royalty (Section 19.1). Mineral Resources are reported above a 0.1 g/t Au cutoff grade. Silver revenues were not considered in the cutoff grade. Mineral Resources are stated as in situ. Mineral Resources have not been adjusted for metallurgical recoveries. Reported units are metric tonnes. Reported table numbers have been rounded as required by reporting guidelines and may result in summation discrepancies.
- 17) Lone Tree Open Pit: Estimated resources at the end of the fiscal year ended December 31, 2024, is shown in Table 1-1. These mineral resources are estimated using a gold price of \$2,175/oz Au and an open pit Cutoff grade of 0.62 g/T Au. More details about the estimated mineral resources are presented in section 14. Mineral resources are not mineral reserves and do not have demonstrated economic viability.
- 18) Upon closing of the Royalty Financing, \$225 million was made available to the Company, of which \$25 million is required to be allocated to the advancement of technical and early-stage permitting activities for Mineral Point in 2026. The remaining \$25 million of the Royalty Financing is also expected to be made available in 2026 to further advance Mineral Point, following the expenditure of the initial disbursement toward the project. In total, the Royalty Financing allows the Company to allocate \$50 million to advance resource expansion and infill drilling, technical and early-stage permitting activities at Mineral Point in 2026.
- 19) The Company has secured over \$1.0 billion in capital since the beginning of 2025 through a combination of financings. This includes (i) approximately \$184 million in gross proceeds raised in May 2025 through a public offering and a concurrent private placement, with up to an additional \$130 million assuming full exercise of the related in-the-money warrants over the next 18 months, (ii) a \$250 million royalty financing with Franco-Nevada (of which \$225 million was funded at closing on March 16, 2026 with approximately \$165 million used to pay legacy debt obligations, and \$25 million remains subject to drawdown conditions), (iii) convertible senior notes issued on March 23, 2026 for an aggregate principle amount of \$287.5 million, and (iv) \$150 million under the Gold Prepay Facility with National Bank of Canada and Macquarie Bank with an additional \$100 million available under an accordion feature, subject to drawdown conditions.

Non-GAAP and Supplemental Financial Performance Measures

The Company has included certain terms or performance measures commonly used in the mining industry that are not defined under US GAAP in this document. These include adjusted loss, adjusted loss per share, and average realized price per ounce. Non-GAAP financial performance measures do not have any standardized meaning prescribed under US GAAP, and therefore, they may not be comparable to similar measures employed by other companies. The data presented is intended to provide additional information and should not be considered in isolation or as a substitute for measures prepared in accordance with US GAAP and should be read in conjunction with the Company's Financial Statements.

"Average realized gold price" per ounce of gold sold is a supplementary financial measure and the calculation is shown in the below table.

	Three months ended March 31,	
<i>(in thousands of U.S. dollars, unless otherwise noted)</i>	2026	2025
Consolidated		
Revenue	52,390	14,048
Silver revenue	(64)	(61)
Gold revenue	52,326	13,987
Gold sold ¹	10,590	4,952
Average realized gold price (\$/oz)	4,941	2,825
Granite Creek		
Revenue	43,839	8,695
Gold ounces sold ¹	8,767	3,106
Average realized gold price (\$/oz)	5,000	2,799
Lone Tree		
Revenue	6,886	3,963
Silver revenue	(60)	(14)
Gold revenue	6,826	3,949
Gold sold	1,440	1,394
Average realized gold price (\$/oz)	4,740	2,833
Ruby Hill		
Revenue	1,665	1,390
Silver revenue	(4)	(47)
Gold revenue	1,661	1,343
Gold sold	383	452
Average realized gold price (\$/oz)	4,337	2,971

Note to table above:

¹ Gold ounces sold include attributable gold from mineralized material sales at a payable factor of 57% in 2026 (2025 - 59%)

"Adjusted loss" and "adjusted loss per share" are non-GAAP financial performance measures that the Company considers to better reflect normalized earnings because it eliminates temporary or non-recurring items such as: gain and losses on fair value measurements, loss on loan extinguishment, loss on Convertible Loans and finance fee expense.. Adjusted loss per share is calculated using the weighted average number of shares outstanding under the basic calculation of earnings per share.

Adjusted loss and adjusted loss per share exclude a number of temporary or one-time items detailed in the below table. Adjusted loss was higher for the three months ended March 31, 2026, compared to the prior year period due to increased pre-development, evaluation and exploration expenses partially offset by higher gross profit.

	Three months ended March 31,	
<i>(in thousands of U.S. dollars, unless otherwise noted)</i>	2026	2025
Net loss	\$ (78,601)	\$ (41,205)
Adjust for:		
Loss on Silver Purchase Agreement and embedded derivative	(26,802)	(7,475)
Finance fee expense	(9,922)	—
Loss on fair value measurement of NSR Royalty	(7,624)	—
Loss on loan extinguishment	(7,110)	—
Loss on fair value measurement of Convertible Loans derivative	(3,463)	(1,437)
Loss on fair value measurement of Orion Gold Prepay Agreement derivative	(3,377)	(8,263)
Gain on fair value measurement of 2026 Gold Prepay derivative	7,893	—
Gain (loss) on fair value measurement of warrant liability	403	(434)
Total adjustments	\$ (50,002)	\$ (17,609)
Adjusted loss	(28,599)	(23,596)
Weighted average shares	837,103,078	431,341,371
Adjusted loss per share	\$ (0.03)	\$ (0.05)



i-80

GOLD CORP

NYSE AMERICAN: IAUX | TSX: IAU

FOR FURTHER INFORMATION,
PLEASE CONTACT:

1.866.525.6450

INFO@i80GOLD.COM

WWW.I80GOLD.COM